

STS RABBIT PAB

货号: S220974

产品全名: STS 兔多抗

基因符号 ES; ASC; XLI; ARSC; SSDD; ARSC1

UNIPROT ID: P08842 (Gene Accession - NP_000342)

背景: This gene encodes a multi-pass membrane protein that is localized to the endoplasmic reticulum. It belongs to the sulfatase family and hydrolyzes several 3-beta-hydroxysteroid sulfates, which serve as metabolic precursors for estrogens, androgens, and cholesterol. Mutations in this gene are associated with X-linked ichthyosis (XLI). Alternatively spliced transcript variants resulting from the use of different promoters have been described for this gene.

抗原: Synthetic peptide of human STS

经过测试的应用: ELISA, WB, IHC

推荐稀释比: IHC: Oct-50;WB: 200-1000;ELISA: 5000-10000

种属反应性: Rabbit

克隆性: Rabbit Polyclonal

亚型: Immunogen-specific rabbit IgG

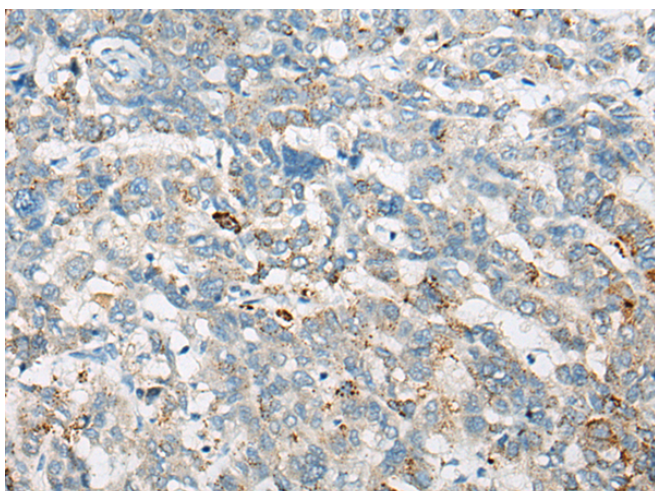
纯化: Antigen affinity purification

种属反应性: Human

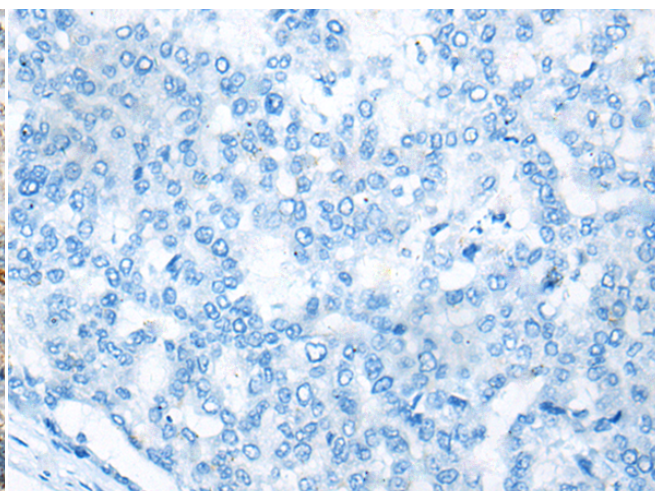
成分: PBS (without Mg²⁺ and Ca²⁺), pH 7.4, 150 mM NaCl, 0.05% Sodium Azide and 40% glycerol

研究领域: Signal Transduction, Cancer

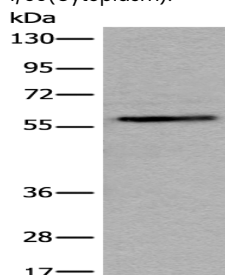
储存和运输: Store at -20°C. Avoid repeated freezing and thawing



Immunohistochemistry analysis of paraffin embedded Human liver cancer tissue using 220974(STS Antibody) at a dilution of 1/35(Cytoplasm).



In comparison with the IHC on the left, the same paraffin-embedded Human liver cancer tissue is first treated with the synthetic peptide and then with 220974(Anti-STS Antibody) at dilution 1/35.



Gel: 8%SDS-PAGE, Lysate: 40 µg;

Lane: HeLa cell lysate;

Primary antibody: 220974(STS Antibody) at dilution 1/300;

Secondary antibody: Goat anti rabbit IgG at 1/8000 dilution;

Exposure time: 5 minutes