

STOML1 RABBIT PAB

货号: S213070

产品全名: STOML1 兔多抗

基因符号: SLP-1; STORP; hUNC-24

UNIPROT ID: Q9UBI4 (Gene Accession - BC034379)

背景: May play a role in cholesterol transfer to late endosomes (PubMed:19696025). May play a role in modulating membrane acid-sensing ion channels. Can specifically inhibit proton-gated current of ASIC1 isoform 1. Can increase inactivation speed of ASIC3. May be involved in regulation of proton sensing in dorsal root ganglions (By similarity). May play a role in protecting FBXW7 isoform 3 from degradation (PubMed:23082202).

抗原: Fusion protein of human STOML1

经过测试的应用: ELISA, IHC

推荐稀释比: IHC: 150-300; ELISA: 5000-10000

种属反应性: Rabbit

克隆性: Rabbit Polyclonal

亚型: Immunogen-specific rabbit IgG

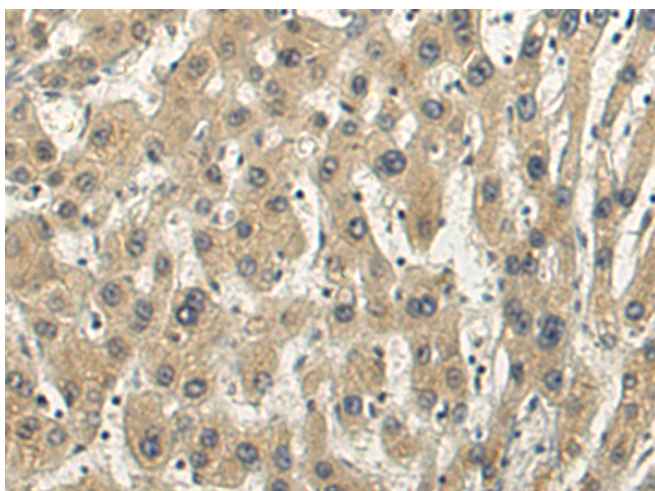
纯化: Antigen affinity purification

种属反应性: Human, Mouse

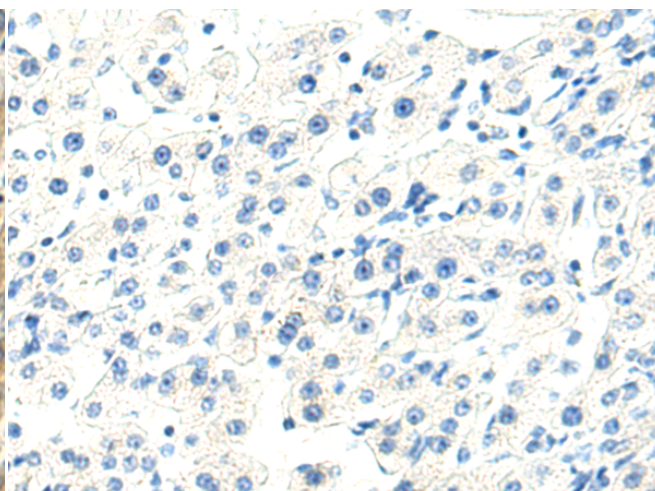
成分: PBS (without Mg²⁺ and Ca²⁺), pH 7.4, 150 mM NaCl, 0.05% Sodium Azide and 40% glycerol

研究领域: Cell Biology

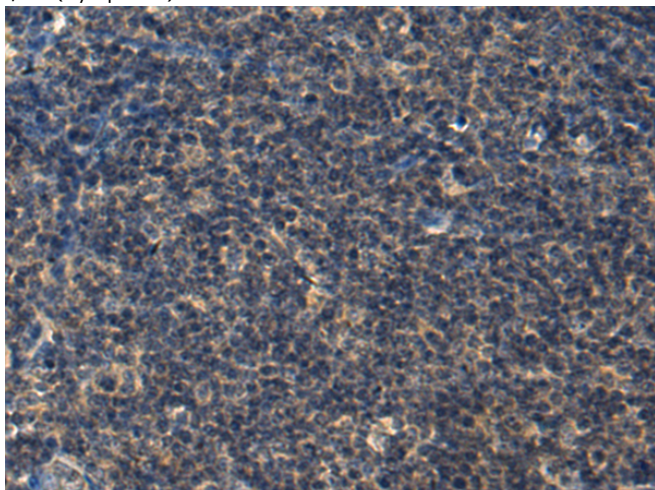
储存和运输: Store at -20°C. Avoid repeated freezing and thawing



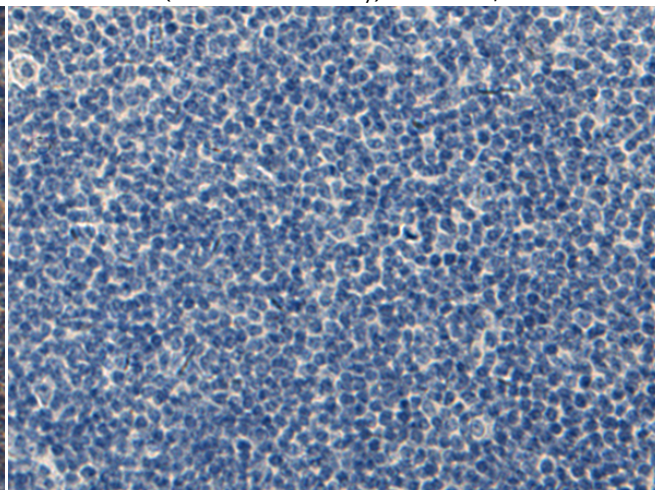
Immunohistochemistry analysis of paraffin embedded Human liver cancer tissue using 213070 (STOML1 Antibody) at a dilution of 1/200 (Cytoplasm).



In comparison with the IHC on the left, the same paraffin-embedded Human liver cancer tissue is first treated with the fusion protein and then with 213070 (Anti-STOML1 Antibody) at dilution 1/200.



The image on the left is immunohistochemistry of paraffin-embedded Human tonsil tissue using 213070 (Anti-STOML1 Antibody) at a dilution of 1/200.



In comparison with the IHC on the left, the same paraffin-embedded Human tonsil tissue is first treated with fusion protein and then with D126578 (Anti-STOML1 Antibody) at dilution 1/200.



Product Description

Pioneering GTPase and Oncogene Product Development since 2010
