

STMN2/STMN3/STMN4 RABBIT PAB

货号: S219883

产品全名: STMN2/STMN3/STMN4 兔多抗

基因符号: SCG10, SCGN10; SCLIP; RB3

UNIPROT ID: Q93045/Q9NZ72/Q9HI69 (Gene Accession - NP_008960/NP_056978/NP_110422)

背景: This gene encodes a member of the stathmin family of phosphoproteins. Stathmin proteins function in microtubule dynamics and signal transduction. The encoded protein plays a regulatory role in neuronal growth and is also thought to be involved in osteogenesis. Reductions in the expression of this gene have been associated with Down's syndrome and Alzheimer's disease. Alternatively spliced transcript variants have been observed for this gene. A pseudogene of this gene is located on the long arm of chromosome 6.

抗原: Synthetic peptide of human STMN2/STMN3/STMN4

经过测试的应用: ELISA, WB, IHC

推荐稀释比: IHC: 50-200;WB: 500-2000;ELISA: 1000-5000

种属反应性: Rabbit

克隆性: Rabbit Polyclonal

亚型: Immunogen-specific rabbit IgG

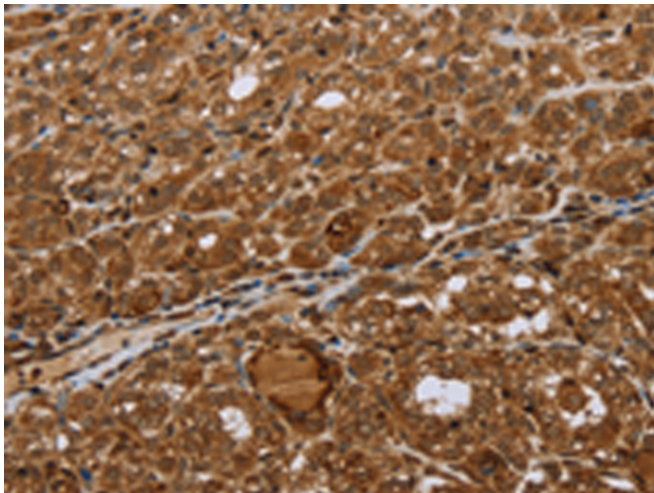
纯化: Antigen affinity purification

种属反应性: Human, Mouse

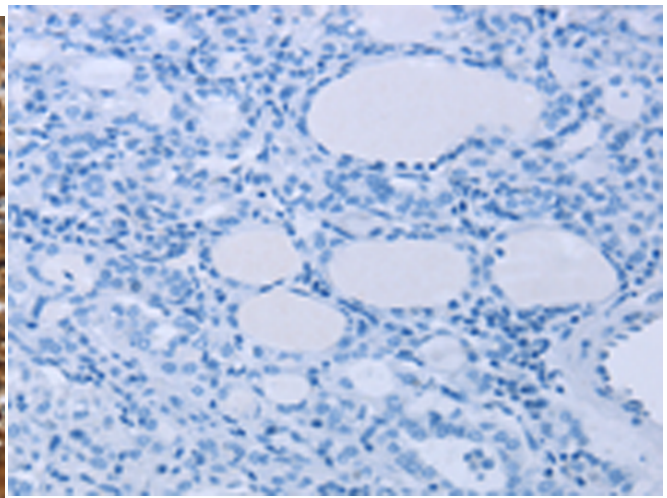
成分: PBS (without Mg²⁺ and Ca²⁺), pH 7.4, 150 mM NaCl, 0.05% Sodium Azide and 40% glycerol

研究领域: Neuroscience

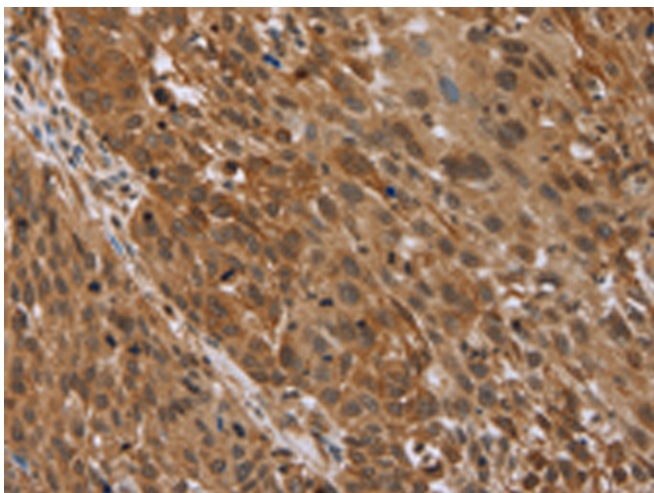
储存和运输: Store at -20°C. Avoid repeated freezing and thawing



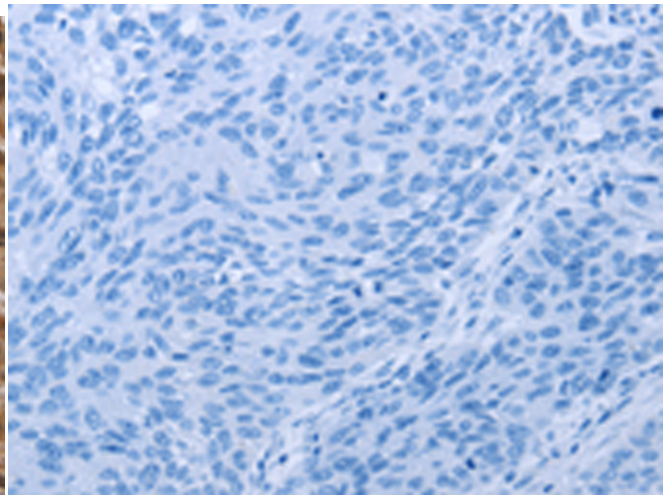
Immunohistochemistry analysis of paraffin embedded Human thyroid cancer tissue using 219883(STMN2/STMN3/STMN4 Antibody) at a dilution of 1/45(Cytoplasm).



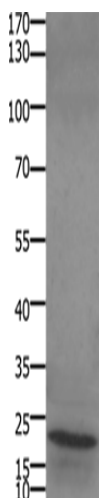
In comparison with the IHC on the left, the same paraffin-embedded Human thyroid cancer tissue is first treated with the synthetic peptide and then with 219883(Anti-STMN2/STMN3/STMN4 Antibody) at dilution 1/45.



The image on the left is immunohistochemistry of paraffin-embedded Human lung cancer tissue using 219883(Anti-STMN2/STMN3/STMN4 Antibody) at a dilution of 1/45.



In comparison with the IHC on the left, the same paraffin-embedded Human lung cancer tissue is first treated with synthetic peptide and then with D260546(Anti-STMN2/STMN3/STMN4 Antibody) at dilution 1/45.



Gel: 10+12%SDS-PAGE, Lysate: 30 µg;
Lane: Human liver cancer tissue;
Primary antibody: 219883(STMN2/STMN3/STMN4 Antibody) at dilution 1/450;
Secondary antibody: Goat anti rabbit IgG at 1/8000 dilution;
Exposure time: 1 minute



Product Description

Pioneering GTPase and Oncogene Product Development since 2010
