

## STK32C RABBIT PAB

货号: S220982

产品全名: STK32C 兔多抗

基因符号: PKE; YANK3

**UNIPROT ID:** Q86UX6 (Gene Accession - NP\_775846)

**背景:** The protein encoded by this gene is a member of the serine/threonine protein kinase family. The specific function of this kinase is not known.

**抗原:** Synthetic peptide of human STK32C

**经过测试的应用:** ELISA, IHC

**推荐稀释比:** IHC: 20-100; ELISA: 1000-2000

**种属反应性:** Rabbit

**克隆性:** Rabbit Polyclonal

**亚型:** Immunogen-specific rabbit IgG

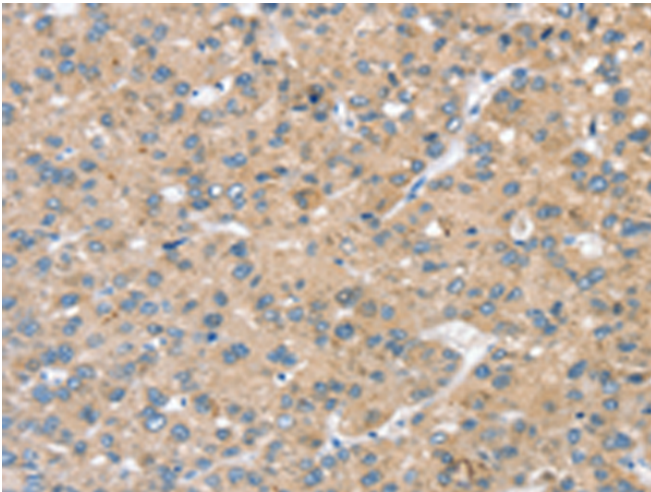
**纯化:** Antigen affinity purification

**种属反应性:** Human, Mouse

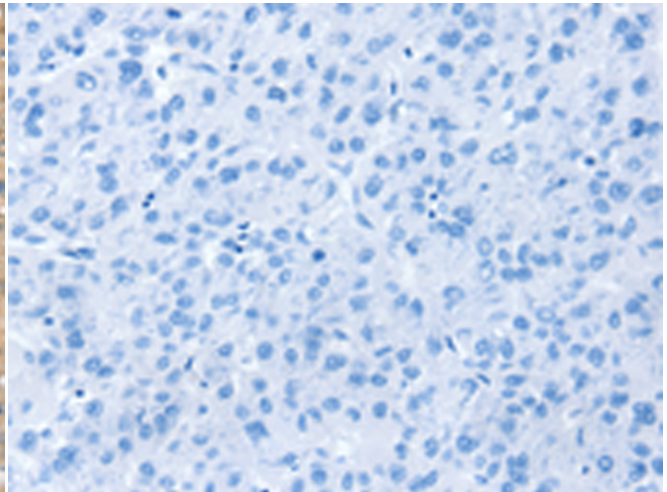
**成分:** PBS (without Mg<sup>2+</sup> and Ca<sup>2+</sup>), pH 7.4, 150 mM NaCl, 0.05% Sodium Azide and 40% glycerol

**研究领域:** Signal Transduction

**储存和运输:** Store at -20°C. Avoid repeated freezing and thawing



Immunohistochemistry analysis of paraffin embedded Human liver cancer tissue using 220982 (STK32C Antibody) at a dilution of 1/20 (Cytoplasm).



In comparison with the IHC on the left, the same paraffin-embedded Human liver cancer tissue is first treated with the synthetic peptide and then with 220982 (Anti-STK32C Antibody) at dilution 1/20.