

STK3/STK4 RABBIT PAB

货号: S220426

产品全名: STK3/STK4 兔多抗

基因符号 KRS1; MST2/KRS2; MST1; YSK3; TIIAC

UNIPROT ID: Q13043 (Gene Accession - NP_006273)

背景: Sterile-20 (Ste20) is a serine/threonine kinase in *Saccharomyces cerevisiae* that is involved in relaying signals from G protein-coupled receptors to cyto-solic MAP kinase cascades. Mammalian protein kinases that display sequence similarity to Ste20 are divided into two groups, the PAK subfamily and the GCK subfamily. The mammalian Ste20-like kinases (MST kinases), also known as Krs proteins, are members of the GCK subfamily. Ksr-1 (MST-2) and Ksr-2 (MST-1) are both direct substrates of caspase-3 that accelerate caspase-3 activation.

抗原: Synthetic peptide of human STK3/STK4

经过测试的应用: ELISA, WB, IHC

推荐稀释比: IHC: 100-300; WB: 500-2000; ELISA: 2000-10000

种属反应性: Rabbit

克隆性: Rabbit Polyclonal

亚型: Immunogen-specific rabbit IgG

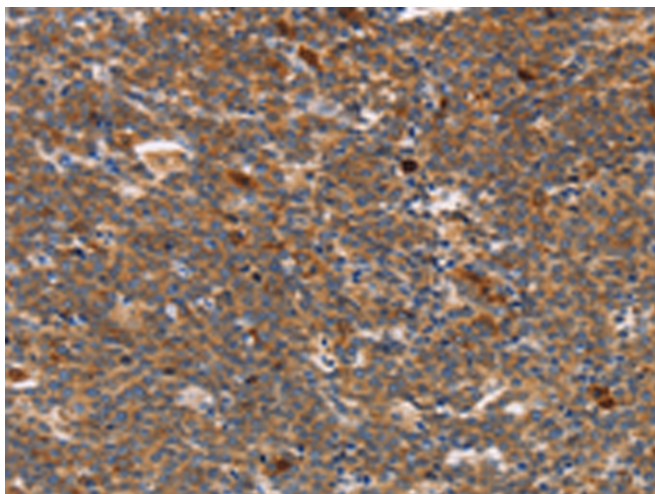
纯化: Antigen affinity purification

种属反应性: Human, Mouse

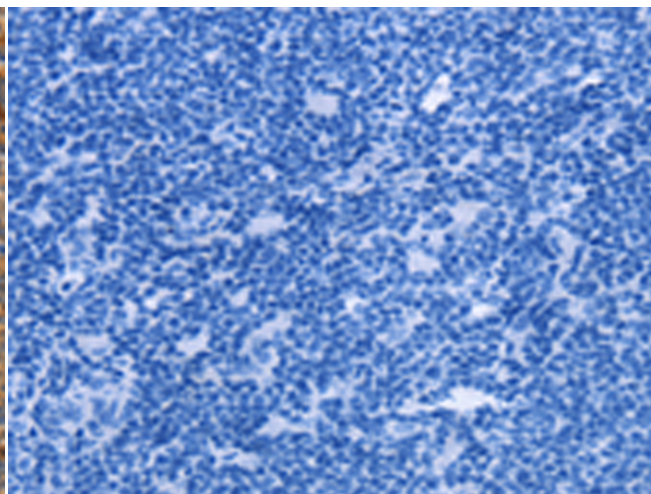
成分: PBS (without Mg²⁺ and Ca²⁺), pH 7.4, 150 mM NaCl, 0.05% Sodium Azide and 40% glycerol

研究领域: Signal Transduction, Cancer

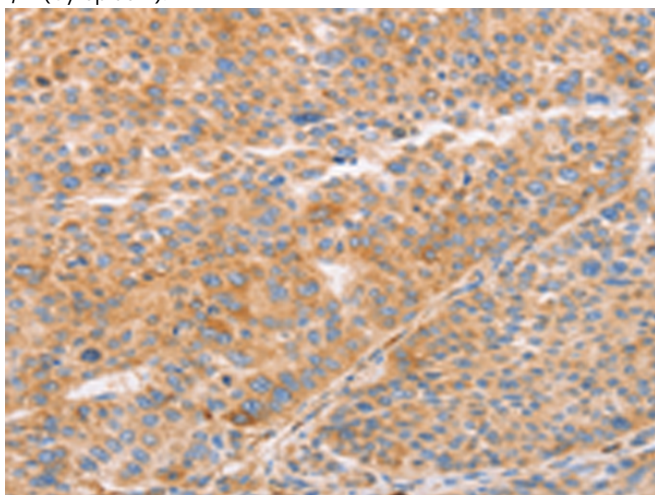
储存和运输: Store at -20°C. Avoid repeated freezing and thawing



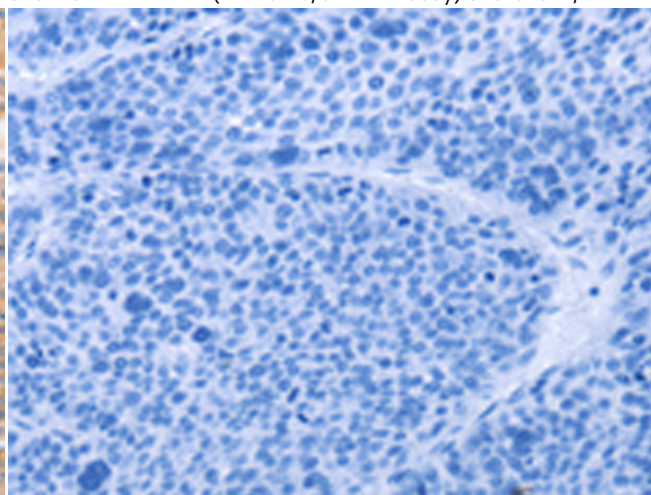
Immunohistochemistry analysis of paraffin embedded Human Lymphoma tissue using 220426 (STK3/STK4 Antibody) at a dilution of 1/70 (Cytoplasm).



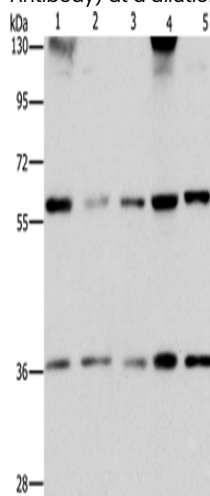
In comparison with the IHC on the left, the same paraffin-embedded Human Lymphoma tissue is first treated with the synthetic peptide and then with 220426 (Anti-STK3/STK4 Antibody) at dilution 1/70.



The image on the left is immunohistochemistry of paraffin-embedded Human liver cancer tissue using 220426 (Anti-STK3/STK4 Antibody) at a dilution of 1/70.



In comparison with the IHC on the left, the same paraffin-embedded Human liver cancer tissue is first treated with synthetic peptide and then with 220426 (Anti-STK3/STK4 Antibody) at dilution 1/70.



Gel: 6% SDS-PAGE, Lysate: 40 µg;
Lane 1-5: PC3 cells, hela cells, human bladder carcinoma tissue, A172 cells, hepG2 cells;
Primary antibody: 220426 (STK3/STK4 Antibody) at dilution 1/1000;
Secondary antibody: Goat anti rabbit IgG at 1/8000 dilution;
Exposure time: 10 seconds

