

STK17B RABBIT PAB

货号: S217165

产品全名: STK17B 兔多抗

基因符号: DRAK2

UNIPROT ID: O94768 (Gene Accession - BC016040)

背景: The full-length STK17B cDNA clone encodes a deduced 372-amino acid protein with a molecular mass of 42.34 kD. The putative kinase domain is located at the N terminus and contains all 11 subdomains conserved among ser/thr kinases. STK17A and STK17B share 59.7% amino acid identity. Northern blot analysis revealed that STK17B was expressed in various tissues, such as heart, placenta, liver, and pancreas, as different-sized transcripts, presumably due to differences in the 3-prime untranslated region. Transient transfection of COS-7 cells showed that STK17B localized in nuclei. Phosphorylates myosin light chains. Acts as a positive regulator of apoptosis.

抗原: Fusion protein of human STK17B

经过测试的应用: ELISA, IHC

推荐稀释比: IHC: 50-200; ELISA: 1000-5000

种属反应性: Rabbit

克隆性: Rabbit Polyclonal

亚型: Immunogen-specific rabbit IgG

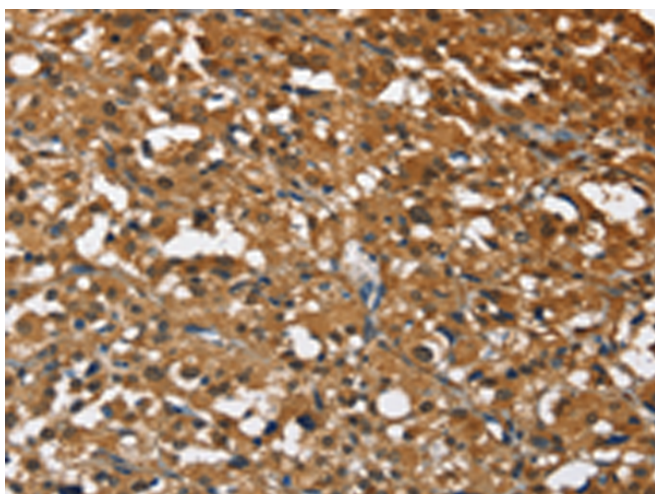
纯化: Antigen affinity purification

种属反应性: Human, Mouse, Rat

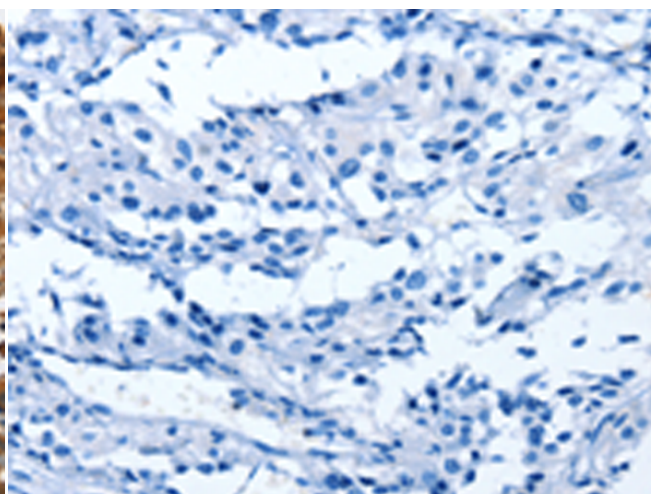
成分: PBS (without Mg²⁺ and Ca²⁺), pH 7.4, 150 mM NaCl, 0.05% Sodium Azide and 40% glycerol

研究领域: Signal Transduction, Cancer

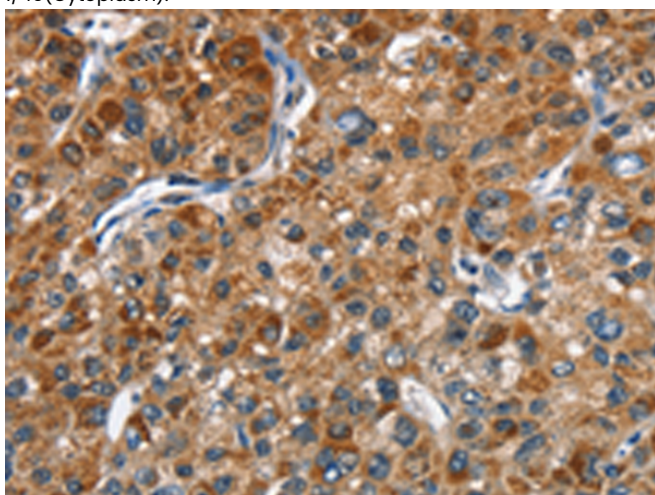
储存和运输: Store at -20°C. Avoid repeated freezing and thawing



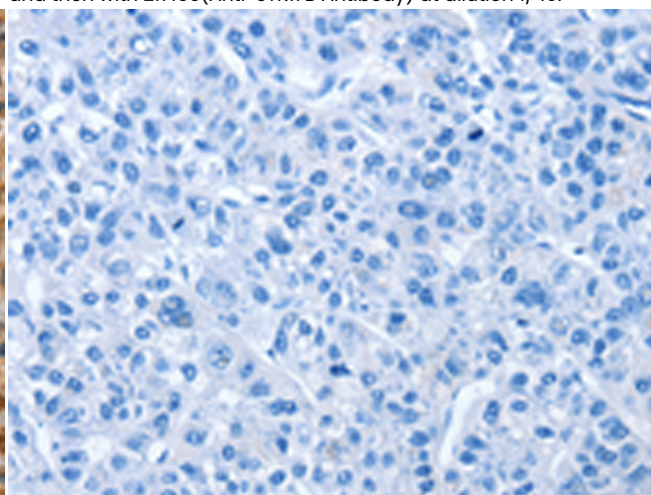
Immunohistochemistry analysis of paraffin embedded Human thyroid cancer tissue using 217165 (STK17B Antibody) at a dilution of 1/40 (Cytoplasm).



In comparison with the IHC on the left, the same paraffin-embedded Human thyroid cancer tissue is first treated with the fusion protein and then with 217165 (Anti-STK17B Antibody) at dilution 1/40.



The image on the left is immunohistochemistry of paraffin-embedded Human liver cancer tissue using 217165 (Anti-STK17B Antibody) at a dilution of 1/40.



In comparison with the IHC on the left, the same paraffin-embedded Human liver cancer tissue is first treated with fusion protein and then with D221904 (Anti-STK17B Antibody) at dilution 1/40.



Product Description

Pioneering GTPase and Oncogene Product Development since 2010
