

STING RABBIT MAB

货号: N262999

产品全名: STING 兔单克隆抗体

基因符号 ERIS; MITA; MPYS; SAVI; NET23; STING; hMITA; hSTING; STING-beta; Transmembrane Protein 173

UNIPROT ID: Q86WV6

背景: Facilitator of innate immune signaling that promotes the production of type I interferon (IFN-alpha and IFN-beta). Innate immune response is triggered in response to non-CpG double-stranded DNA from viruses and bacteria delivered to the cytoplasm.

抗原: Recombinant protein of human TMEM173

经过测试的应用: WB, IHC-P

推荐稀释比: WB: 1/500-1/1000 IHC: 1/50-1/100

种属反应性: Rabbit

克隆性: Rabbit Monoclonal

克隆编号: R06-9A7

分子量: Calculated MW: 42 kDa; Observed MW: 42 kDa

亚型: IgG

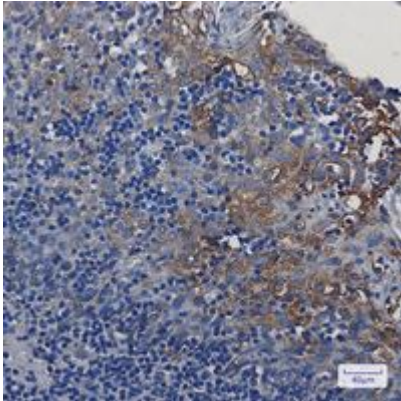
纯化: Affinity Purified

种属反应性: Human, Rat

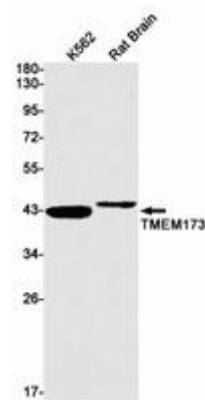
成分: PBS (without Mg²⁺ and Ca²⁺), pH 7.3 containing 50% glycerol, 0.5% BSA and 0.02% sodium azide

研究领域: Immunology

储存和运输: Store at -20°C. Avoid repeated freezing and thawing



Immunohistochemistry analysis of paraffin-embedded Human tonsil using TMEM173 antibody. High-pressure and temperature Sodium Citrate pH 6.0 was used for antigen retrieval.



Western blot analysis of TMEM173 in K562, rat Brain lysates using Transmembrane Protein 173 antibody.