

STEAP2 RABBIT PAB

货号: N225485

产品全名: STEAP2 兔多抗

基因符号 STEAP2; PCANAPI; STAMPI; Metalloreductase STEAP2; Prostate cancer-associated protein 1; Protein up-regulated in metastatic prostate cancer; PUMPCn; Six-transmembrane epithelial antigen of prostate 2; SixTransMembrane protein of prostate 1

UNIPROT ID: Q8NFT2

背景: Metalloreductase that has the ability to reduce both Fe^{3+} to Fe^{2+} and Cu^{2+} to Cu^{1+} . Uses NAD^{+} as acceptor.

抗原: The antiserum was produced against synthesized peptide derived from human STEA2. AA range:431-480

经过测试的应用: IHC-P,IHC-F,ICC/IF,ELISA

推荐稀释比: IHC: 1/50-1/100 IF: 1/50-1/200 ELISA: 1/10000

种属反应性: Rabbit

克隆性: Rabbit Polyclonal

分子量: -

亚型: IgG

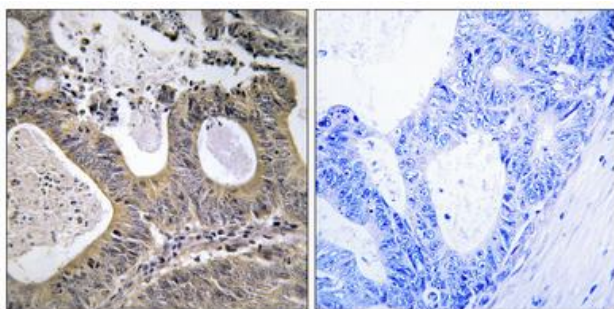
纯化: Affinity Chromatography

种属反应性: Human,Mouse

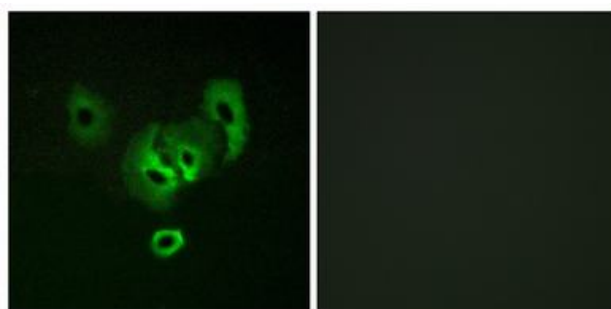
成分: PBS (without Mg^{2+} and Ca^{2+}), pH 7.3 containing 50% glycerol, 0.5% BSA and 0.02% sodium azide

研究领域: Cancer

储存和运输: Store at -20°C . Avoid repeated freezing and thawing



Immunohistochemical analysis of paraffin-embedded Human tonsils using STEAP2 antibody. Sample with blocking peptide on the right. High-pressure and temperature Sodium Citrate pH 6.0 was used for antigen retrieval.



Immunofluorescence analysis of STEAP2 in A549 cells using STEAP2 antibody. Sample with blocking peptide on the right.