

STAUFEN RABBIT PAB

货号: N225847

产品全名: Staufen 兔多抗

基因符号 STAU; PPPIR150

UNIPROT ID: O95793

背景: Binds double-stranded RNA (regardless of the sequence) and tubulin. May play a role in specific positioning of mRNAs at given sites in the cell by cross-linking cytoskeletal and RNA components, and in stimulating their translation at the site.

抗原: A synthesized peptide derived from human Staufen

经过测试的应用: WB, ICC/IF, FC

推荐稀释比: WB: 1/500-1/1000 IF: 1/50-1/200 FC: 1/50-1/100

种属反应性: Rabbit

克隆性: Rabbit Polyclonal

分子量: Calculated MW: 63 kDa; Observed MW: 55 kDa

亚型: IgG

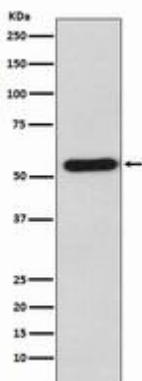
纯化: Affinity Chromatography

种属反应性: Human, Mouse and Rat

成分: PBS (without Mg²⁺ and Ca²⁺), pH 7.3 containing 50% glycerol, 0.5% BSA and 0.02% sodium azide

研究领域: Signal Transduction

储存和运输: Store at -20°C. Avoid repeated freezing and thawing



Western blot analysis of Staufen in K562 lysates using Staufen antibody.