

STATHMIN 2 RABBIT PAB

货号: N225024

产品全名: Stathmin 2 兔多抗

基因符号 STMN2; SCG10; SCGN10; Stathmin-2; Superior cervical ganglion-10 protein; Protein SCG10

UNIPROT ID: Q93045

背景: Regulator of microtubule stability.

抗原: Synthesized peptide derived from the Internal region of human Stathmin-2.

经过测试的应用: WB,IHC-P,ELISA

推荐稀释比: WB: 1/500-1/1000 IHC: 1/50-1/100 ELISA: 1/10000

种属反应性: Rabbit

克隆性: Rabbit Polyclonal

分子量: Calculated MW: 21 kDa; Observed MW: 21 kDa

亚型: IgG

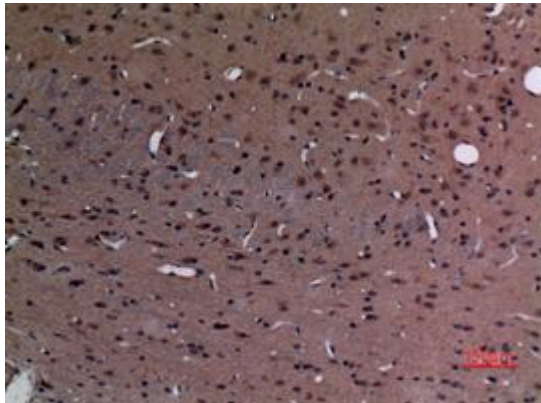
纯化: Affinity Purified

种属反应性: Human, Mouse and Rat

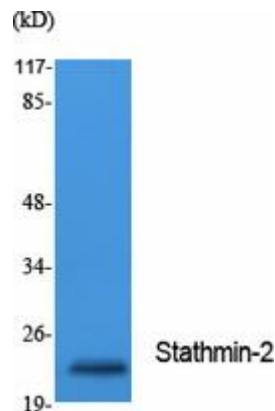
成分: PBS (without Mg²⁺ and Ca²⁺), pH 7.3 containing 50% glycerol, 0.5% BSA and 0.02% sodium azide

研究领域: Neuroscience

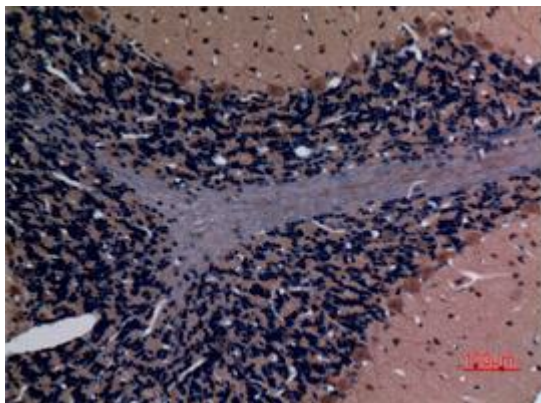
储存和运输: Store at -20°C. Avoid repeated freezing and thawing



Immunohistochemistry analysis of paraffin-embedded rat brain using Stathmin 2 antibody. High-pressure and temperature Sodium Citrate pH 6.0 was used for antigen retrieval.



Western blot analysis of Stathmin 2 in Jurkat lysates using Stathmin2 antibody.



Immunohistochemistry analysis of paraffin-embedded rat brain using Stathmin 2 antibody. High-pressure and temperature Sodium Citrate pH 6.0 was used for antigen retrieval.



Immunohistochemistry analysis of paraffin-embedded mouse brain using Stathmin 2 antibody. High-pressure and temperature Sodium Citrate pH 6.0 was used for antigen retrieval.