

STAT5B RABBIT MAB

货号: N263562

产品全名: STAT5b 兔单克隆抗体

基因符号 STAT5

UNIPROT ID: P51692

背景: Stat5 is activated in response to a wide variety of ligands including IL-2, GM-CSF, growth hormone and prolactin. Stat5 is constitutively active in some leukemic cell types. Phosphorylated Stat5 is found in some endothelial cells treated with IL-3, which suggests its involvement in angiogenesis and cell motility. Stat5a and Stat5b are independently regulated and activated in various cell types.

抗原: Recombinant protein of human STAT5b

经过测试的应用: WB,IHC-F,IHC-P,ICC/IF,IP

推荐稀释比: WB: 1/500-1/1000 IHC: 1/50-1/100 IF: 1/50-1/200 IP: 1/20

种属反应性: Rabbit

克隆性: Rabbit Monoclonal

克隆编号: R08-218

分子量: Calculated MW: 90 kDa; Observed MW: 90 kDa

亚型: IgG

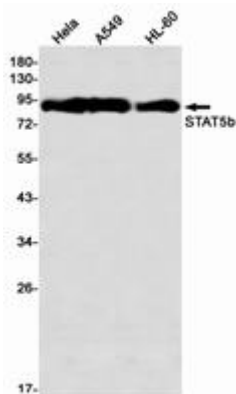
纯化: Affinity Purified

种属反应性: Human, Mouse and Rat

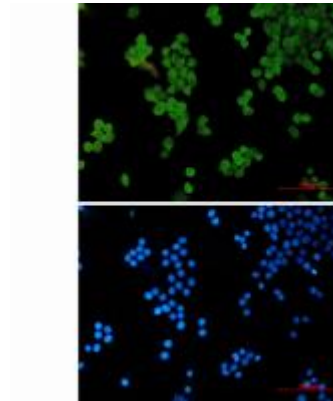
成分: PBS (without Mg²⁺ and Ca²⁺), pH 7.3 containing 50% glycerol, 0.5% BSA and 0.02% sodium azide

研究领域: Signal Transduction

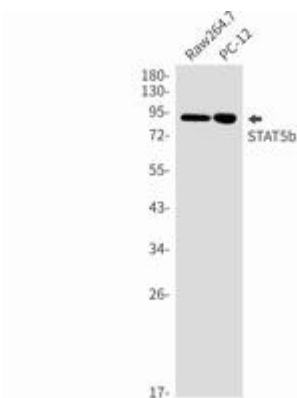
储存和运输: Store at -20°C. Avoid repeated freezing and thawing



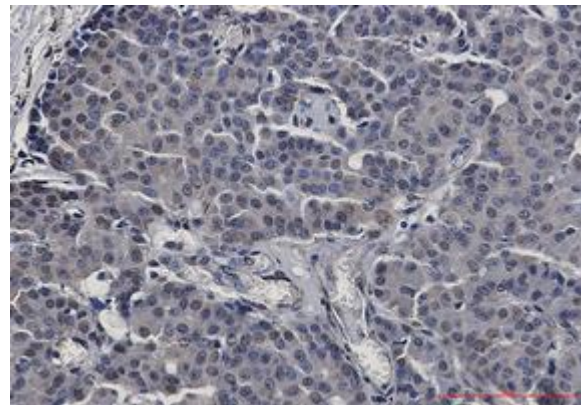
Western blot analysis of STAT5b in HeLa, A549, HL-60 lysates using STAT5b antibody



Immunocytochemistry analysis of STAT5b (green) in HeLa using STAT5b antibody, and DAPI (blue).



Western blot analysis of STAT5b in Raw264.7, PC-12 lysates using STAT5b antibody.



Immunohistochemistry analysis of paraffin-embedded Human breast cancer using STAT5b antibody. High-pressure and temperature Sodium Citrate pH 6.0 was used for antigen retrieval.