

STAT1 RABBIT PAB

货号: S216259

产品全名: STAT1 兔多抗

基因符号: ISGF-3, STAT91

UNIPROT ID: P42224 (Gene Accession - BC002704)

背景: The protein encoded by this gene is a member of the STAT protein family. In response to cytokines and growth factors, STAT family members are phosphorylated by the receptor associated kinases, and then form homo- or heterodimers that translocate to the cell nucleus where they act as transcription activators. This protein can be activated by various ligands including interferon- α , interferon- γ , EGF, PDGF and IL6. This protein mediates the expression of a variety of genes, which is thought to be important for cell viability in response to different cell stimuli and pathogens. Two alternatively spliced transcript variants encoding distinct isoforms have been described.

抗原: Fusion protein of human STAT1

经过测试的应用: ELISA, IHC

推荐稀释比: IHC: 25-100; ELISA: 1000-2000

种属反应性: Rabbit

克隆性: Rabbit Polyclonal

亚型: Immunogen-specific rabbit IgG

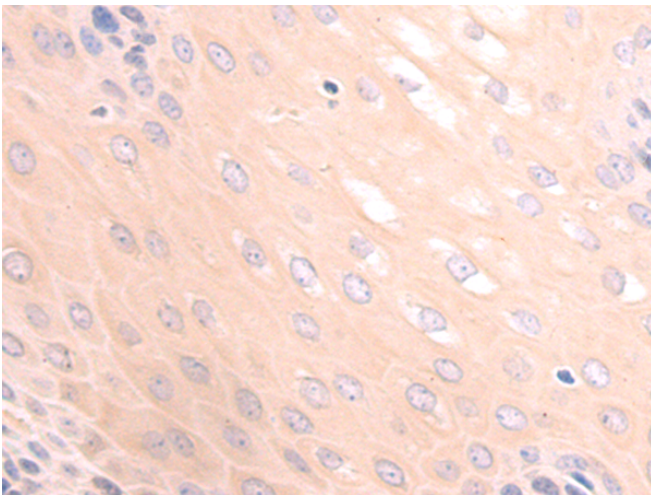
纯化: Antigen affinity purification

种属反应性: Human, Mouse

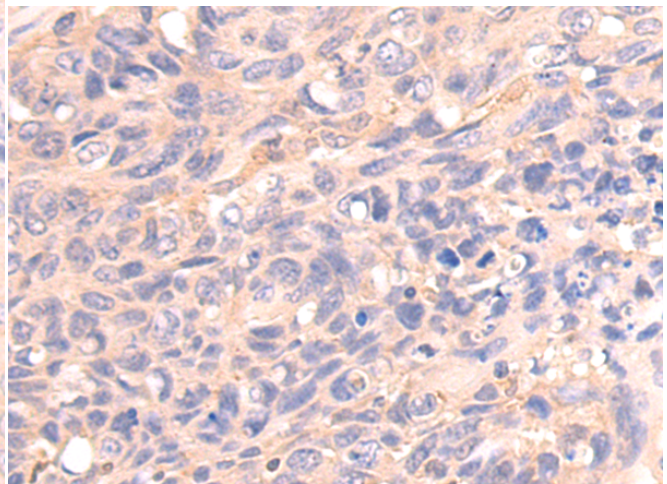
成分: PBS (without Mg²⁺ and Ca²⁺), pH 7.4, 150 mM NaCl, 0.05% Sodium Azide and 40% glycerol

研究领域: Signal Transduction, Epigenetics and Nuclear Signaling

储存和运输: Store at -20°C. Avoid repeated freezing and thawing



Immunohistochemistry analysis of paraffin-embedded Human cervical cancer tissue using 216259(STAT1 Antibody) at a dilution of 1/20(Cytoplasm or Nucleus).



Immunohistochemistry analysis of paraffin-embedded Human colon cancer tissue using 216259(Anti-STAT1 Antibody) at a dilution of 1/20.