

STAT1 RABBIT MAB

货号: N262938

产品全名: STAT1 兔单克隆抗体

基因符号 STAT1; Signal transducer and activator of transcription 1-
alpha/beta; Transcription factor ISGF-3 components p91/p84

UNIPROT ID: P42224

背景: The protein encoded by this gene is a member of the STAT protein family. In response to cytokines and growth factors, STAT family members are phosphorylated by the receptor associated kinases, and then form homo- or heterodimers that translocate to the cell nucleus where they act as transcription activators.

抗原: A synthetic peptide of human STAT1 alpha

经过测试的应用: WB,IP

推荐稀释比: WB: 1/500-1/1000 IP: 1/20

种属反应性: Rabbit

克隆性: Rabbit Monoclonal

克隆编号: R03-2K5

分子量: Calculated MW: 87 kDa; Observed MW: 87 kDa

亚型: IgG

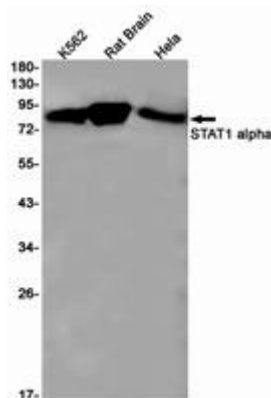
纯化: Affinity Purified

种属反应性: Human, Mouse and Rat

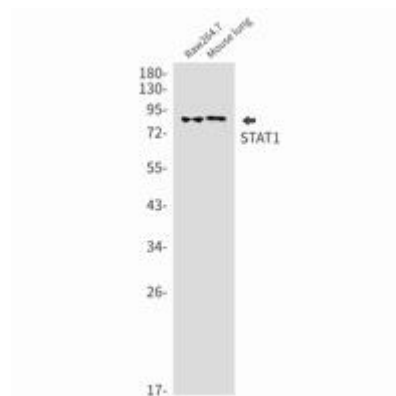
成分: PBS (without Mg²⁺ and Ca²⁺), pH 7.3 containing 50% glycerol, 0.5% BSA and 0.02% sodium azide

研究领域: Signal Transduction

储存和运输: Store at -20°C. Avoid repeated freezing and thawing



Western blot analysis of STAT1 alpha in K562, rat Brain, Hela lysates using STAT1 alpha antibody.



Western blot analysis of STAT1 in Raw264.7, mouse lung lysates using STAT1 antibody.