

STAT1 (9D6) MOUSE MAB

货号: N261301

产品全名: STAT1 (9D6) 小鼠单抗

基因符号 STAT1; Signal transducer and activator of transcription 1-
alpha/beta; Transcription factor ISGF-3 components p91/p84

UNIPROT ID: P42224

背景: The protein encoded by this gene is a member of the STAT protein family. In response to cytokines and growth factors, STAT family members are phosphorylated by the receptor associated kinases, and then form homo- or heterodimers that translocate to the cell nucleus where they act as transcription activators.

抗原: Synthetic peptide conjugated to KLH.

经过测试的应用: IHC-P

推荐稀释比: IHC: 1/50-1/100

种属反应性: Mouse

克隆性: Mouse Monoclonal

克隆编号: 9D6-7C9-8F5

分子量: -

亚型: IgG1

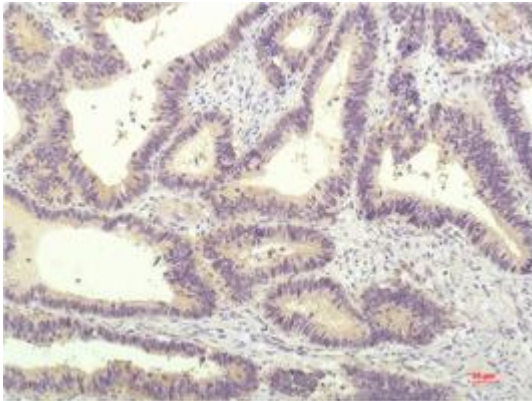
纯化: Affinity Purified

种属反应性: Human,Rat,Mouse

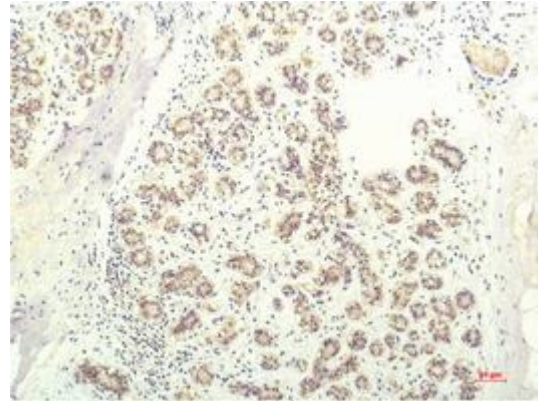
成分: PBS (without Mg²⁺ and Ca²⁺), pH 7.3 containing 50% glycerol, 0.5% BSA and 0.02% sodium azide

研究领域: Signal Transduction

储存和运输: Store at -20°C. Avoid repeated freezing and thawing



Immunohistochemical analysis of paraffin-embedded Human tonsils using STAT1 (9D6) antibody. High-pressure and temperature Sodium Citrate pH 6.0 was used for antigen retrieval.



Immunohistochemistry analysis of paraffin-embedded Human Breast Carcinoma Tissue using STAT1 (9D6) antibody. High-pressure and temperature Sodium Citrate pH 6.0 was used for antigen retrieval.