

## STARD8 RABBIT PAB

货号: S211600

产品全名: STARD8 兔多抗

基因符号: DLC3; ARHGAP38; STARTGAP3

**UNIPROT ID:** Q92502 (Gene Accession - BC035587)

**背景:** This gene encodes a member of a subfamily of Rho GTPase activating proteins that contain a steroidogenic acute regulatory protein related lipid transfer domain. The encoded protein localizes to focal adhesions and may be involved in regulating cell morphology. This protein may also function as a tumor suppressor. [provided by RefSeq, Mar 2010]

**抗原:** Fusion protein of human STARD8

**经过测试的应用:** ELISA, IHC

**推荐稀释比:** IHC: 50-200; ELISA: 5000-10000

**种属反应性:** Rabbit

**克隆性:** Rabbit Polyclonal

**亚型:** Immunogen-specific rabbit IgG

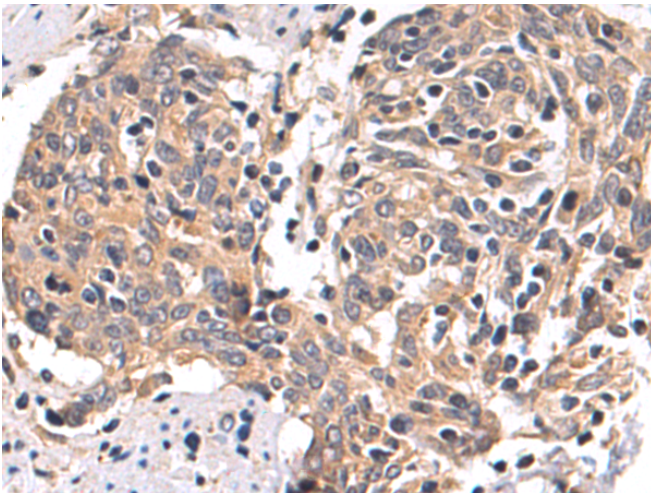
**纯化:** Antigen affinity purification

**种属反应性:** Human, Mouse

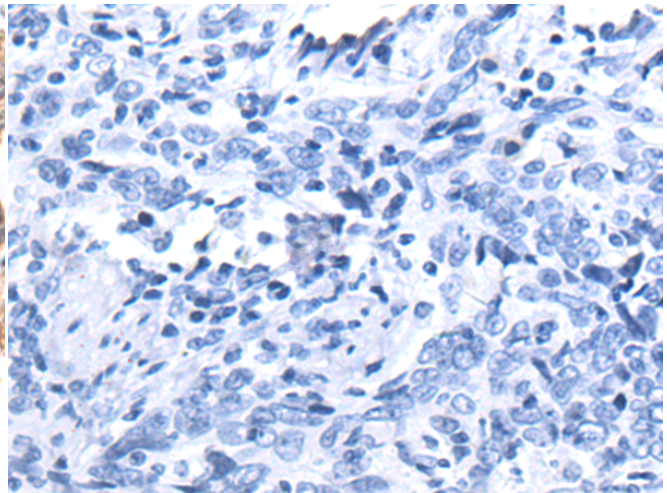
**成分:** PBS (without Mg<sup>2+</sup> and Ca<sup>2+</sup>), pH 7.4, 150 mM NaCl, 0.05% Sodium Azide and 40% glycerol

**研究领域:** Signal Transduction

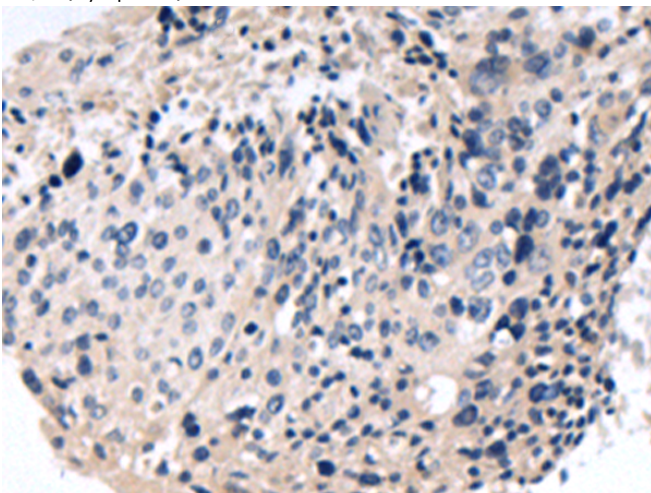
**储存和运输:** Store at -20°C. Avoid repeated freezing and thawing



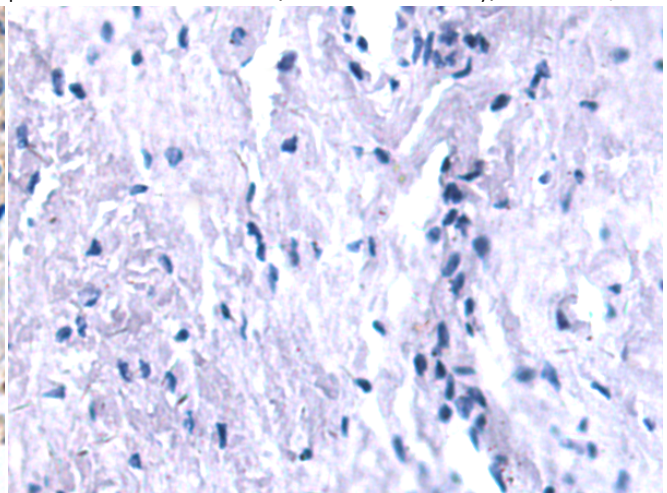
Immunohistochemistry analysis of paraffin embedded Human esophagus cancer tissue using 211600(STARD8 Antibody) at a dilution of 1/55(Cytoplasm).



In comparison with the IHC on the left, the same paraffin-embedded Human esophagus cancer tissue is first treated with the fusion protein and then with 211600(Anti-STARD8 Antibody) at dilution 1/55.



The image on the left is immunohistochemistry of paraffin-embedded Human cervical cancer tissue using 211600(Anti-STARD8 Antibody) at a dilution of 1/55.



In comparison with the IHC on the left, the same paraffin-embedded Human cervical cancer tissue is first treated with fusion protein and then with D123241(Anti-STARD8 Antibody) at dilution 1/55.



# Product Description

Pioneering GTPase and Oncogene Product Development since 2010

---