

STAG1 RABBIT PAB

货号: S217790

产品全名: STAG1 兔多抗

基因符号: SAI; MRD47; SCC3A

UNIPROT ID: Q8WVM7 (Gene Accession - BC064699)

背景: This gene is a member of the SCC3 family and is expressed in the nucleus. It encodes a component of cohesin, a multisubunit protein complex that provides sister chromatid cohesion along the length of a chromosome from DNA replication through prophase and prometaphase, after which it is dissociated in preparation for segregation during anaphase.

抗原: Fusion protein of human STAG1

经过测试的应用: ELISA, IHC

推荐稀释比: IHC: 50-200; ELISA: 5000-10000

种属反应性: Rabbit

克隆性: Rabbit Polyclonal

亚型: Immunogen-specific rabbit IgG

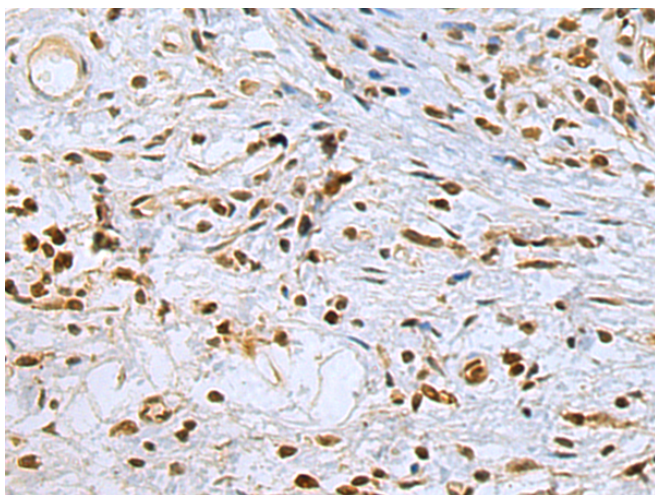
纯化: Antigen affinity purification

种属反应性: Human

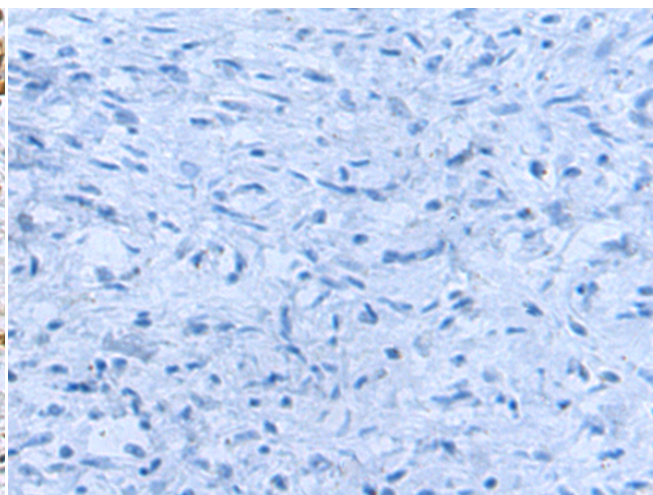
成分: PBS (without Mg²⁺ and Ca²⁺), pH 7.4, 150 mM NaCl, 0.05% Sodium Azide and 40% glycerol

研究领域: Epigenetics and Nuclear Signaling, Cancer

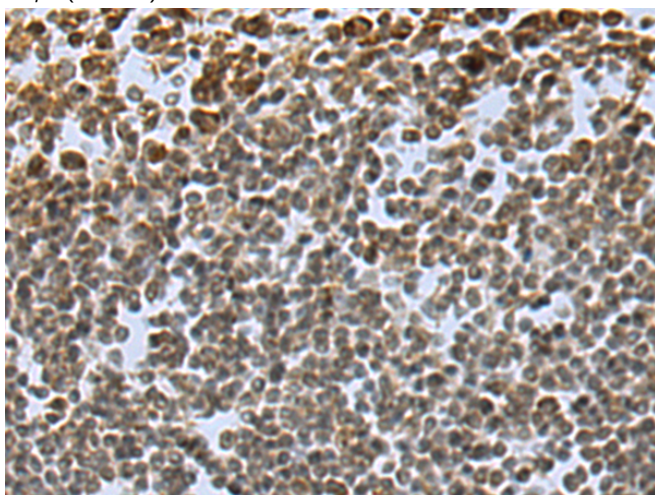
储存和运输: Store at -20°C. Avoid repeated freezing and thawing



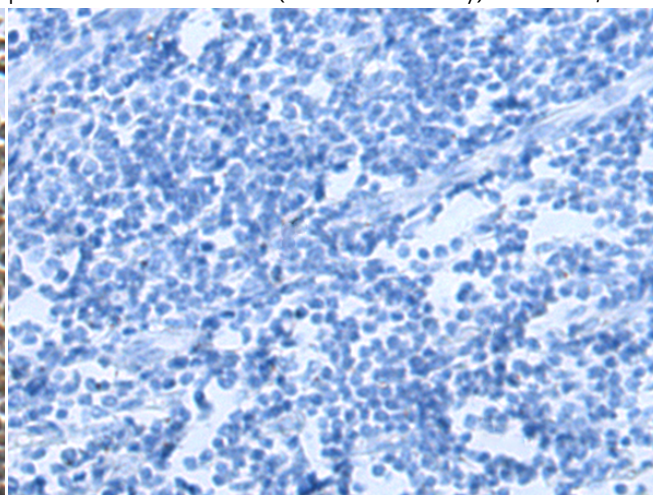
Immunohistochemistry analysis of paraffin embedded Human esophagus cancer tissue using 217790(STAG1 Antibody) at a dilution of 1/70(Nucleus).



In comparison with the IHC on the left, the same paraffin-embedded Human esophagus cancer tissue is first treated with the fusion protein and then with 217790(Anti-STAG1 Antibody) at dilution 1/70.



The image on the left is immunohistochemistry of paraffin-embedded Human tonsil tissue using 217790(Anti-STAG1 Antibody) at a dilution of 1/70.



In comparison with the IHC on the left, the same paraffin-embedded Human tonsil tissue is first treated with fusion protein and then with D223086(Anti-STAG1 Antibody) at dilution 1/70.

