

## ST3GAL3 RABBIT PAB

货号: S222446

产品全名: ST3GAL3 兔多抗

基因符号 ST3N; DEE15; MRT12; SIAT6; EIEE15; ST3GALII; ST3GalIII; ST3Gal III

**UNIPROT ID:** Q11203 (Gene Accession - NP\_006270 )

**背景:** The protein encoded by this gene is a type II membrane protein that catalyzes the transfer of sialic acid from CMP-sialic acid to galactose-containing substrates. The encoded protein is normally found in the Golgi apparatus but can be proteolytically processed to a soluble form. This protein is a member of glycosyltransferase family 29. Mutations in this gene have been associated with a form of autosomal recessive nonsyndromic cognitive disability as well as infantile epileptic encephalopathy. Multiple transcript variants encoding several different isoforms have been found for this gene.

**抗原:** Synthetic peptide of human ST3GAL3

**经过测试的应用:** ELISA, IHC

**推荐稀释比:** IHC: 50-200; ELISA: 5000-10000

**种属反应性:** Rabbit

**克隆性:** Rabbit Polyclonal

**亚型:** Immunogen-specific rabbit IgG

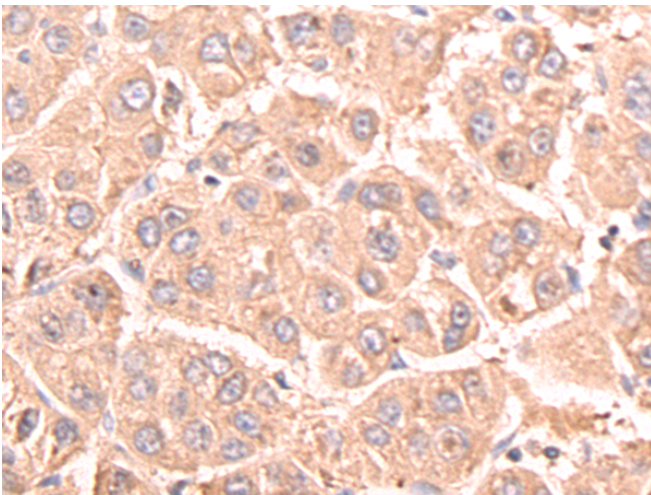
**纯化:** Antigen affinity purification

**种属反应性:** Human, Mouse, Rat

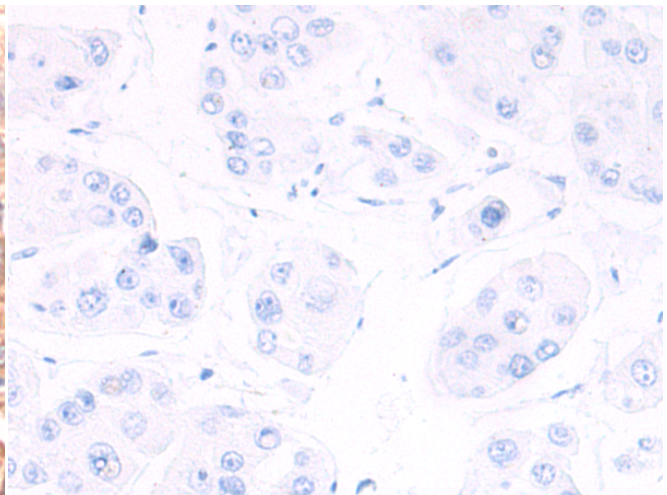
**成分:** PBS (without Mg<sup>2+</sup> and Ca<sup>2+</sup>), pH 7.4, 150 mM NaCl, 0.05% Sodium Azide and 40% glycerol

**研究领域:** Signal Transduction

**储存和运输:** Store at -20°C. Avoid repeated freezing and thawing



Immunohistochemistry analysis of paraffin embedded Human liver cancer tissue using 222446 (ST3GAL3 Antibody) at a dilution of 1/50 (Cytoplasm).



In comparison with the IHC on the left, the same paraffin-embedded Human liver cancer tissue is first treated with the synthetic peptide and then with 222446 (Anti-ST3GAL3 Antibody) at dilution 1/50.