

SSX4 RABBIT PAB

货号: S214749

产品全名: SSX4 兔多抗

基因符号: CT5.4

UNIPROT ID: O60224 (Gene Accession - NP_005627)

背景: The product of this gene belongs to the family of highly homologous synovial sarcoma X (SSX) breakpoint proteins. These proteins may function as transcriptional repressors. They are also capable of eliciting spontaneously humoral and cellular immune responses in cancer patients, and are potentially useful targets in cancer vaccine-based immunotherapy.

抗原: Synthetic peptide of human SSX4

经过测试的应用: ELISA, IHC

推荐稀释比: IHC: 25-100; ELISA: 2000-5000

种属反应性: Rabbit

克隆性: Rabbit Polyclonal

亚型: Immunogen-specific rabbit IgG

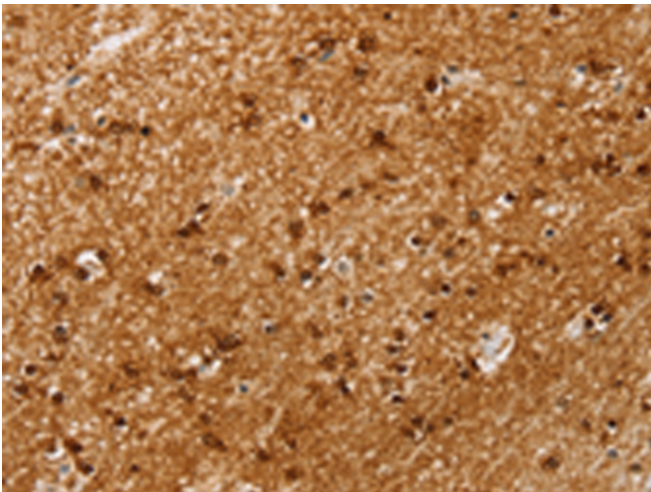
纯化: Antigen affinity purification

种属反应性: Human

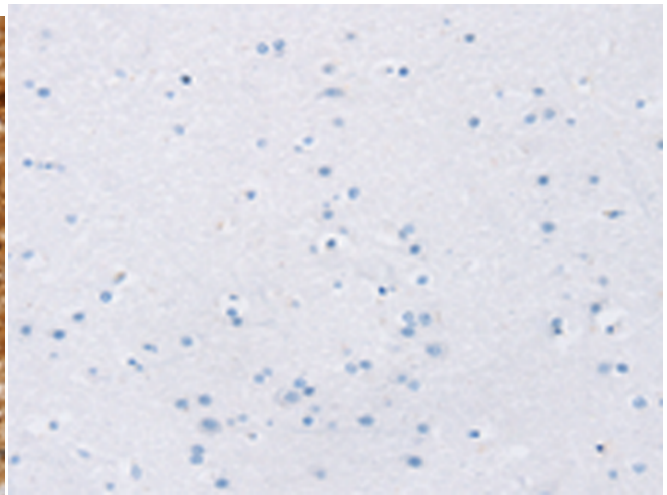
成分: PBS (without Mg²⁺ and Ca²⁺), pH 7.4, 150 mM NaCl, 0.05% Sodium Azide and 40% glycerol

研究领域: Epigenetics and Nuclear Signaling

储存和运输: Store at -20°C. Avoid repeated freezing and thawing



Immunohistochemistry analysis of paraffin embedded Human brain tissue using 214749(SSX4 Antibody) at a dilution of 1/20(Nucleus).



In comparison with the IHC on the left, the same paraffin-embedded Human brain tissue is first treated with the synthetic peptide and then with 214749(Anti-SSX4 Antibody) at dilution 1/20.