

SSTR2 RABBIT PAB

货号: S213980

产品全名: SSTR2 兔多抗

基因符号

UNIPROT ID: P30874 (Gene Accession - NP_001041)

背景: Somatostatin acts at many sites to inhibit the release of many hormones and other secretory proteins. The biologic effects of somatostatin are probably mediated by a family of G protein-coupled receptors that are expressed in a tissue-specific manner. SSTR2 is a member of the superfamily of receptors having seven transmembrane segments and is expressed in highest levels in cerebrum and kidney.

抗原: Synthetic peptide of human SSTR2

经过测试的应用: ELISA, WB, IHC

推荐稀释比: IHC: 40-200;WB: 200-1000;ELISA: 5000-10000

种属反应性: Rabbit

克隆性: Rabbit Polyclonal

亚型: Immunogen-specific rabbit IgG

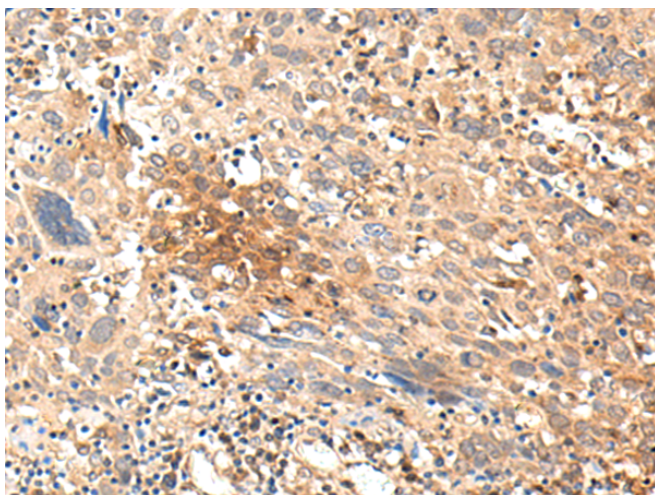
纯化: Antigen affinity purification

种属反应性: Human, Mouse, Rat

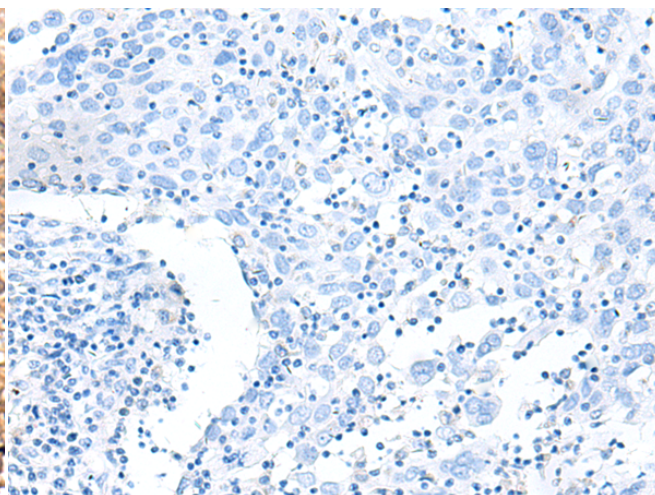
成分: PBS (without Mg²⁺ and Ca²⁺), pH 7.4, 150 mM NaCl, 0.05% Sodium Azide and 40% glycerol

研究领域: Cancer, Metabolism, Neuroscience

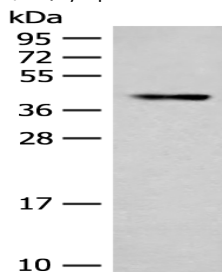
储存和运输: Store at -20°C. Avoid repeated freezing and thawing



Immunohistochemistry analysis of paraffin embedded Human cervical cancer tissue using 213980 (SSTR2 Antibody) at a dilution of 1/35 (Cytoplasm and Cell membrane).



In comparison with the IHC on the left, the same paraffin-embedded Human cervical cancer tissue is first treated with the synthetic peptide and then with 213980 (Anti-SSTR2 Antibody) at dilution 1/35.



Gel: 12% SDS-PAGE, Lysate: 40 µg;
Lane: Human fetal brain tissue lysate;
Primary antibody: 213980 (SSTR2 Antibody) at dilution 1/200;
Secondary antibody: Goat anti rabbit IgG at 1/8000 dilution;
Exposure time: 30 seconds