

SSB RABBIT PAB

货号: S220973

产品全名: SSB 兔多抗

基因符号: La; LARP3; La/SSB

UNIPROT ID: P05455 (Gene Accession - NP_003133)

背景: The protein encoded by this gene is involved in diverse aspects of RNA metabolism, including binding and protecting poly(U) termini of nascent RNA polymerase III transcripts from exonuclease digestion, processing 5' and 3' ends of pre-tRNA precursors, acting as an RNA chaperone, and binding viral RNAs associated with hepatitis C virus. Autoantibodies reacting with this protein are found in the sera of patients with Sjogren syndrome and systemic lupus erythematosus.

抗原: Synthetic peptide of human SSB

经过测试的应用: ELISA, WB, IHC

推荐稀释比: IHC: 25-100;WB: 500-2000;ELISA: 2000-5000

种属反应性: Rabbit

克隆性: Rabbit Polyclonal

亚型: Immunogen-specific rabbit IgG

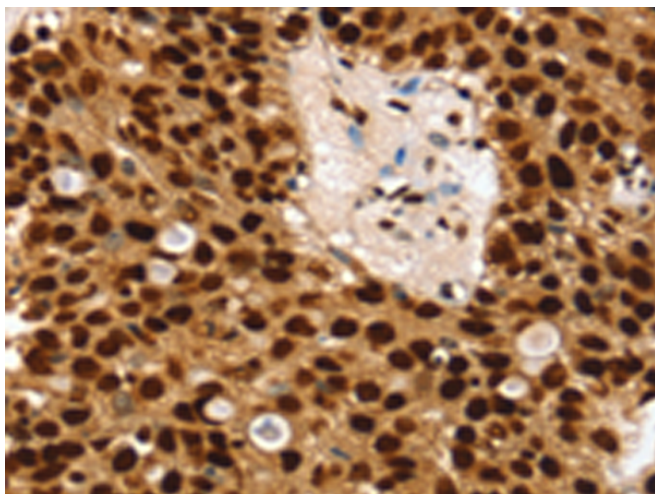
纯化: Antigen affinity purification

种属反应性: Human

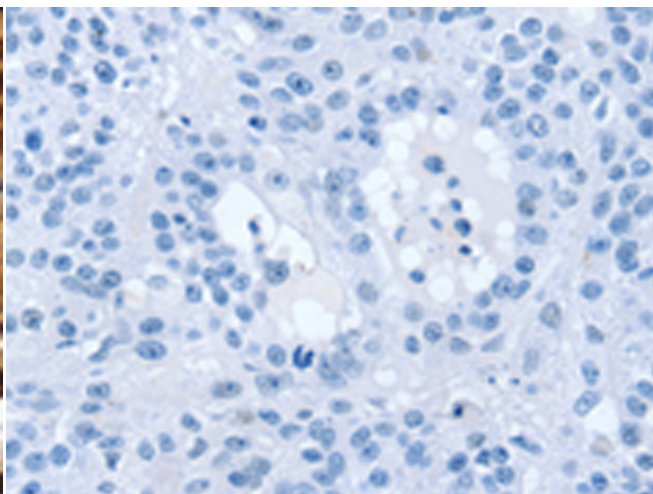
成分: PBS (without Mg²⁺ and Ca²⁺), pH 7.4, 150 mM NaCl, 0.05% Sodium Azide and 40% glycerol

研究领域: Epigenetics and Nuclear Signaling, Immunology

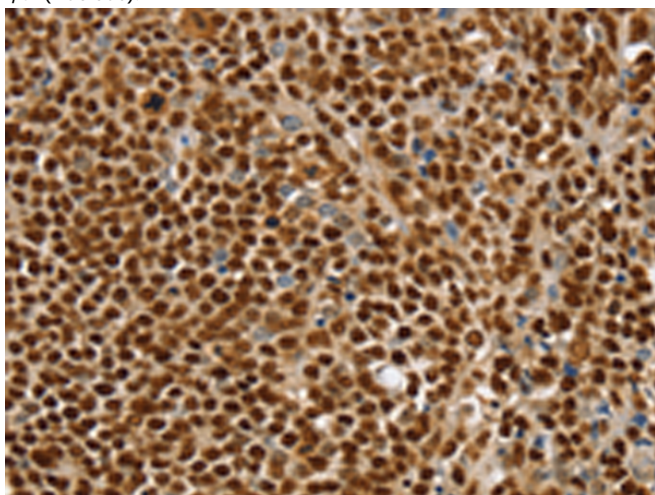
储存和运输: Store at -20°C. Avoid repeated freezing and thawing



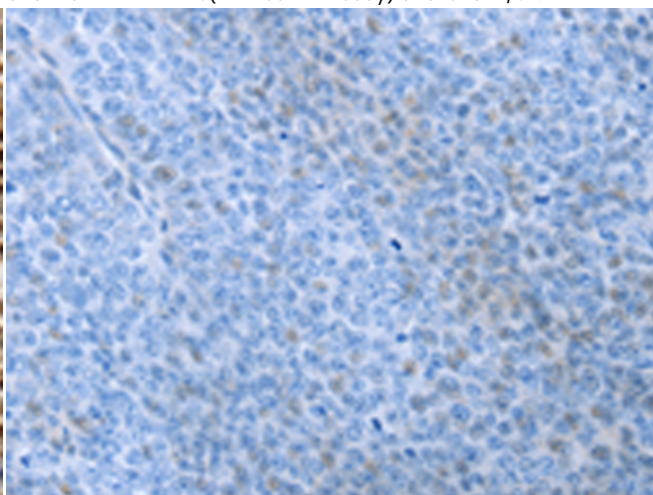
Immunohistochemistry analysis of paraffin embedded Human breast cancer tissue using 220973(SSB Antibody) at a dilution of 1/30(Nucleus).



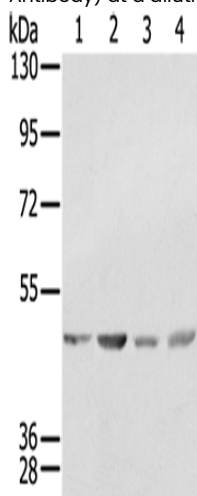
In comparison with the IHC on the left, the same paraffin-embedded Human breast cancer tissue is first treated with the synthetic peptide and then with 220973(Anti-SSB Antibody) at dilution 1/30.



The image on the left is immunohistochemistry of paraffin-embedded Human ovarian cancer tissue using 220973(Anti-SSB Antibody) at a dilution of 1/30.



In comparison with the IHC on the left, the same paraffin-embedded Human ovarian cancer tissue is first treated with synthetic peptide and then with D262304(Anti-SSB Antibody) at dilution 1/30.



Gel: 8%SDS-PAGE, Lysate: 40 µg;
Lane 1-4: K562 cells, 231 cells, Raji cells, hela cells;
Primary antibody: 220973(SSB Antibody) at dilution 1/400;
Secondary antibody: Goat anti rabbit IgG at 1/8000 dilution;
Exposure time: 10 seconds

