

SS18L1 RABBIT PAB

货号: S219559

产品全名: SS18L1 兔多抗

基因符号: CREST; LP2261

UNIPROT ID: O75177 (Gene Accession - BC034494)

背景: This gene encodes a calcium-responsive transactivator which is an essential subunit of a neuron-specific chromatin-remodeling complex. The structure of this gene is similar to that of the SS18 gene. Mutations in this gene are involved in amyotrophic lateral sclerosis (ALS). Alternatively spliced transcript variants have been found for this gene.

抗原: Fusion protein of human SS18L1

经过测试的应用: ELISA, IHC

推荐稀释比: IHC: 50-200; ELISA: 5000-10000

种属反应性: Rabbit

克隆性: Rabbit Polyclonal

亚型: Immunogen-specific rabbit IgG

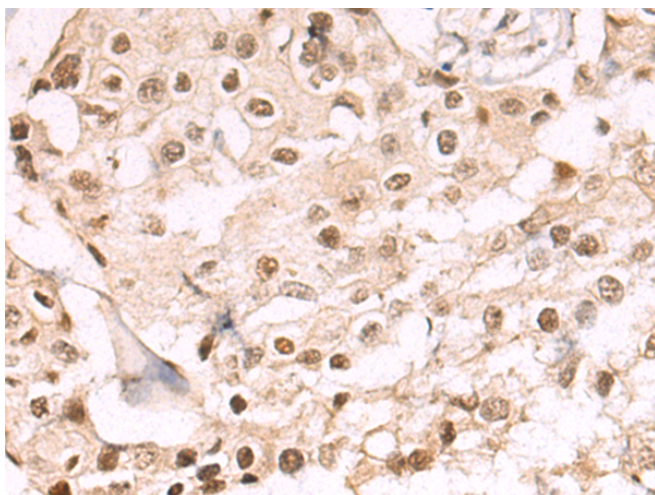
纯化: Antigen affinity purification

种属反应性: Human, Mouse, Rat

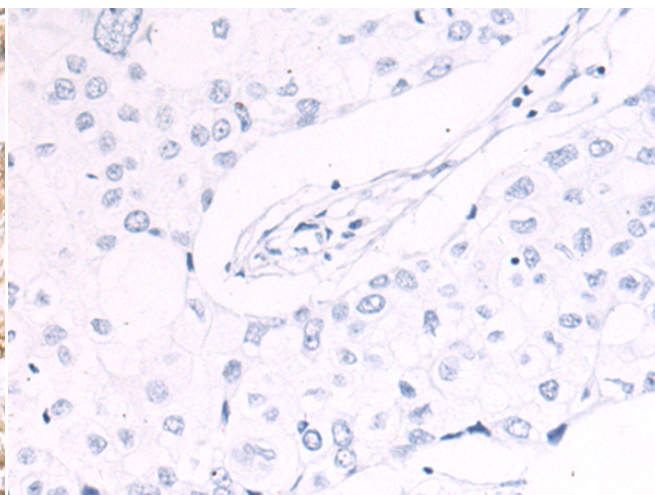
成分: PBS (without Mg²⁺ and Ca²⁺), pH 7.4, 150 mM NaCl, 0.05% Sodium Azide and 40% glycerol

研究领域: Epigenetics and Nuclear Signaling

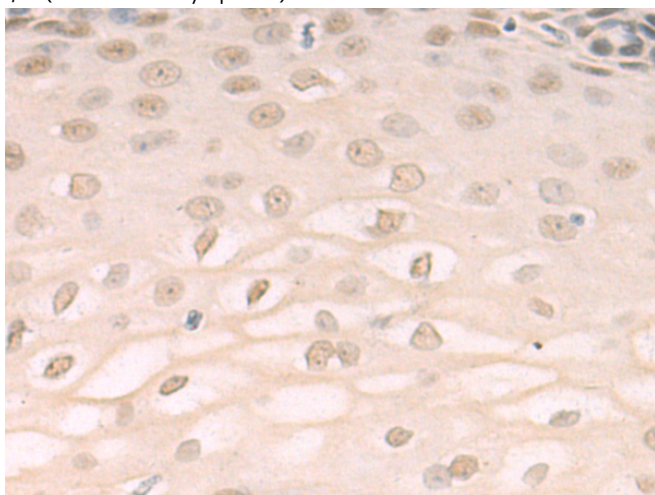
储存和运输: Store at -20°C. Avoid repeated freezing and thawing



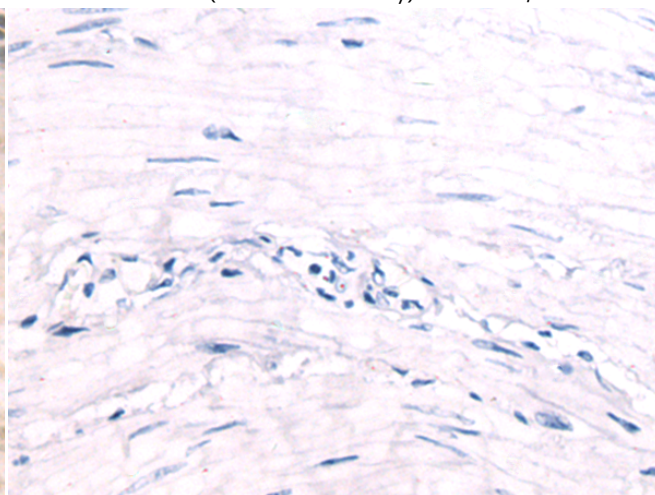
Immunohistochemistry analysis of paraffin embedded Human breast cancer tissue using 219559 (SS18L1 Antibody) at a dilution of 1/65 (Nucleus and Cytoplasm).



In comparison with the IHC on the left, the same paraffin-embedded Human breast cancer tissue is first treated with the fusion protein and then with 219559 (Anti-SS18L1 Antibody) at dilution 1/65.



The image on the left is immunohistochemistry of paraffin-embedded Human esophagus cancer tissue using 219559 (Anti-SS18L1 Antibody) at a dilution of 1/65.



In comparison with the IHC on the left, the same paraffin-embedded Human esophagus cancer tissue is first treated with fusion protein and then with D227746 (Anti-SS18L1 Antibody) at dilution 1/65.



Product Description

Pioneering GTPase and Oncogene Product Development since 2010
