

SRSF8 RABBIT PAB

货号: S222372

产品全名: SRSF8 兔多抗

基因符号: DSM-1; SRP46; SFRS2B

UNIPROT ID: Q9BRL6 (Gene Accession - NP_115285)

背景: This gene encodes a member of a family of proteins containing a ribonucleoprotein (RNP)-type RNA binding motif and a carboxyl-terminal arginine-serine-rich (RS) domain. The encoded protein functions as a pre-mRNA splicing factor. There is a pseudogene for this gene on chromosome 7. Alternative splicing results in multiple transcript variants.

抗原: Synthetic peptide of human SRSF8

经过测试的应用: ELISA, WB, IHC

推荐稀释比: IHC: 50-100; WB: 500-2000; ELISA: 5000-10000

种属反应性: Rabbit

克隆性: Rabbit Polyclonal

亚型: Immunogen-specific rabbit IgG

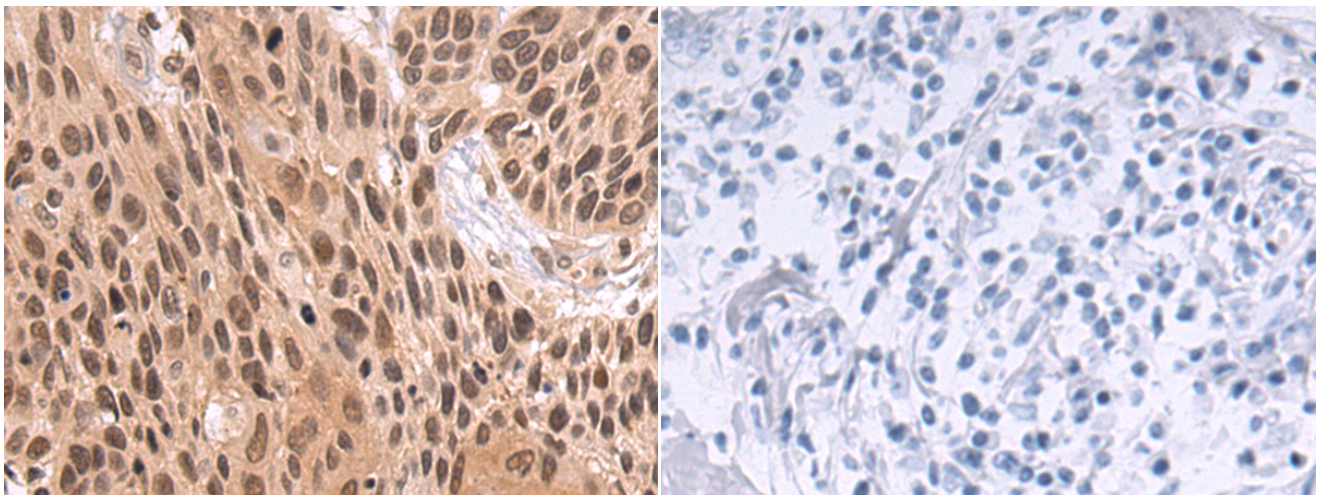
纯化: Antigen affinity purification

种属反应性: Human

成分: PBS (without Mg²⁺ and Ca²⁺), pH 7.4, 150 mM NaCl, 0.05% Sodium Azide and 40% glycerol

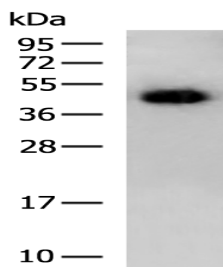
研究领域: Cell Biology

储存和运输: Store at -20°C. Avoid repeated freezing and thawing



Immunohistochemistry analysis of paraffin embedded Human esophagus cancer tissue using 222372(SRSF8 Antibody) at a dilution of 1/50(Nucleus).

In comparison with the IHC on the left, the same paraffin-embedded Human esophagus cancer tissue is first treated with the synthetic peptide and then with 222372(Anti-SRSF8 Antibody) at dilution 1/50.



Gel: 12%SDS-PAGE, Lysate: 40 µg;

Lane: 231 cell lysate;

Primary antibody: 222372(SRSF8 Antibody) at dilution 1/250;

Secondary antibody: HRP-conjugated Goat anti rabbit IgG at 1/5000 dilution;

Exposure time: 5 minutes