

## SRSF3 RABBIT MAB

货号: N262891

产品全名: SRSF3 兔单克隆抗体

基因符号 SRSF3; SFRS3; SRP20; Serine/arginine-rich splicing factor 3; Pre-mRNA-splicing factor SRP20; Splicing factor; arginine/serine-rich 3

**UNIPROT ID:** P84103

背景: May be involved in RNA processing in relation with cellular proliferation and/or maturation.

抗原: A synthetic peptide of human SFRS3

经过测试的应用: WB,IHC-P

推荐稀释比: WB: 1/500-1/1000 IHC: 1/50-1/100

种属反应性: Rabbit

克隆性: Rabbit Monoclonal

克隆编号: R01-6G2

分子量: Calculated MW: 19 kDa; Observed MW: 19 kDa

亚型: IgG

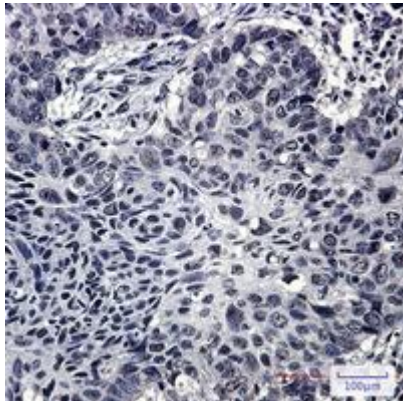
纯化: Affinity Purified

种属反应性: Human, Mouse and Rat

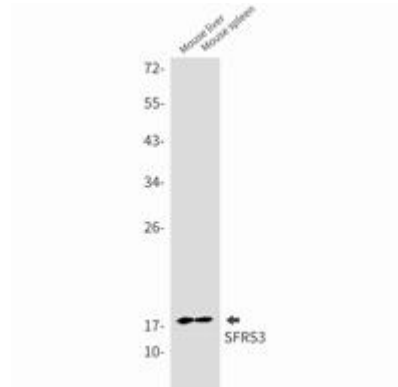
成分: PBS (without Mg<sup>2+</sup> and Ca<sup>2+</sup>), pH 7.3 containing 50% glycerol, 0.5% BSA and 0.02% sodium azide

研究领域: Epigenetics and Nuclear Signaling

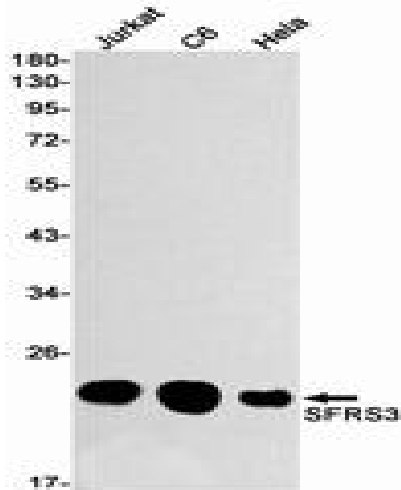
储存和运输: Store at -20°C. Avoid repeated freezing and thawing



Immunohistochemistry analysis of paraffin-embedded Human lung cancer using SFRS3 antibody. High-pressure and temperature Sodium Citrate pH 6.0 was used for antigen retrieval.



Western blot analysis of SFRS3 in mouse liver, mouse spleen lysates using SRSF3 antibody.



Western blot analysis of SFRS3 in Jurkat, C6, HeLa lysates using SFRS3 antibody.