

SRRM2 RABBIT PAB

货号: S222428

产品全名: SRRM2 兔多抗

基因符号 CWF21; Cwc21; 300-KD; SRL300; SRm300; HSPC075

UNIPROT ID: Q9UQ35 (Gene Accession - NP_057417)

背景: Enables C2H2 zinc finger domain binding activity and protein N-terminus binding activity. Involved in mRNA splicing, via spliceosome. Located in Cajal body and nuclear speck. Part of U2-type catalytic step 2 spliceosome and U2-type precatalytic spliceosome. Biomarker of Parkinson's disease.

抗原: Synthetic peptide of human SRRM2

经过测试的应用: ELISA, IHC

推荐稀释比: IHC: 50-200; ELISA: 5000-10000

种属反应性: Rabbit

克隆性: Rabbit Polyclonal

亚型: Immunogen-specific rabbit IgG

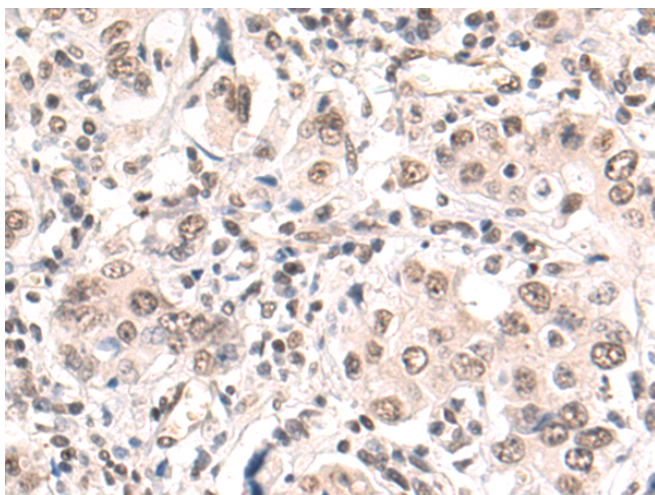
纯化: Antigen affinity purification

种属反应性: Human, Mouse

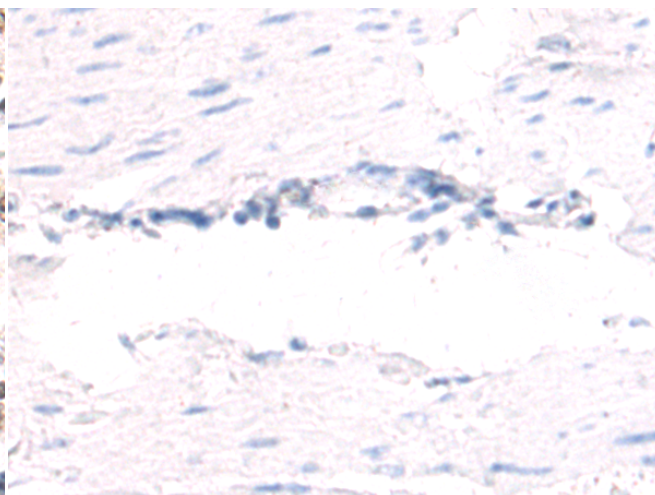
成分: PBS (without Mg²⁺ and Ca²⁺), pH 7.4, 150 mM NaCl, 0.05% Sodium Azide and 40% glycerol

研究领域: Epigenetics and Nuclear Signaling

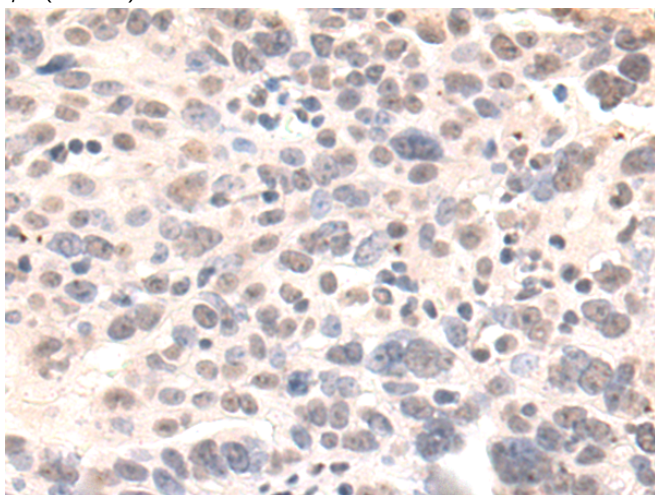
储存和运输: Store at -20°C. Avoid repeated freezing and thawing



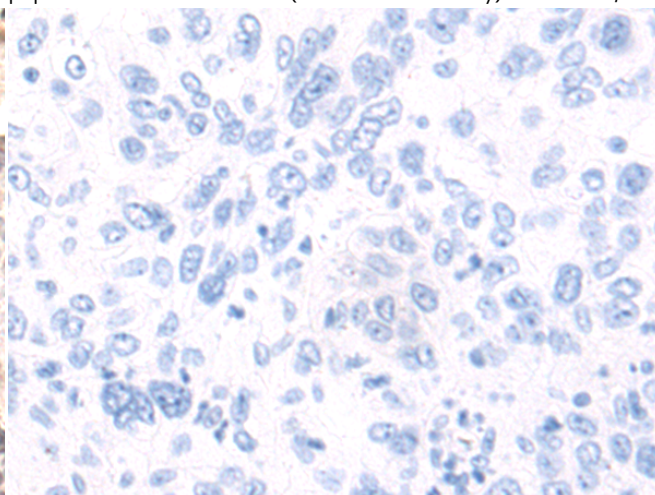
Immunohistochemistry analysis of paraffin embedded Human gastric cancer tissue using 222428(SRRM2 Antibody) at a dilution of 1/50(Nucleus).



In comparison with the IHC on the left, the same paraffin-embedded Human gastric cancer tissue is first treated with the synthetic peptide and then with 222428(Anti-SRRM2 Antibody) at dilution 1/50.



The image on the left is immunohistochemistry of paraffin-embedded Human breast cancer tissue using 222428(Anti-SRRM2 Antibody) at a dilution of 1/50.



In comparison with the IHC on the left, the same paraffin-embedded Human breast cancer tissue is first treated with synthetic peptide and then with D264595(Anti-SRRM2 Antibody) at dilution 1/50.



Product Description

Pioneering GTPase and Oncogene Product Development since 2010
