

## SRPK3 RABBIT PAB

货号: S211604

产品全名: SRPK3 兔多抗

基因符号: MSSK1; STK23; MSSK-1

**UNIPROT ID:** Q9UPE1 (Gene Accession - BC117124)

**背景:** This gene encodes a protein kinase similar to a protein kinase which is specific for the SR (serine/arginine-rich domain) family of splicing factors. A highly similar protein has been shown to play a role in muscle development in mice. Multiple transcript variants encoding different isoforms have been found for this gene.

**抗原:** Fusion protein of human SRPK3

**经过测试的应用:** ELISA, WB, IHC

**推荐稀释比:** IHC: 25-100; WB: 200-1000; ELISA: 1000-2000

**种属反应性:** Rabbit

**克隆性:** Rabbit Polyclonal

**亚型:** Immunogen-specific rabbit IgG

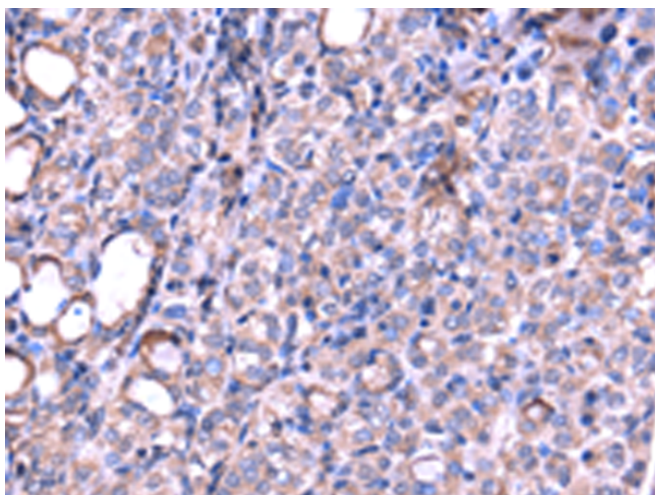
**纯化:** Antigen affinity purification

**种属反应性:** Human, Mouse

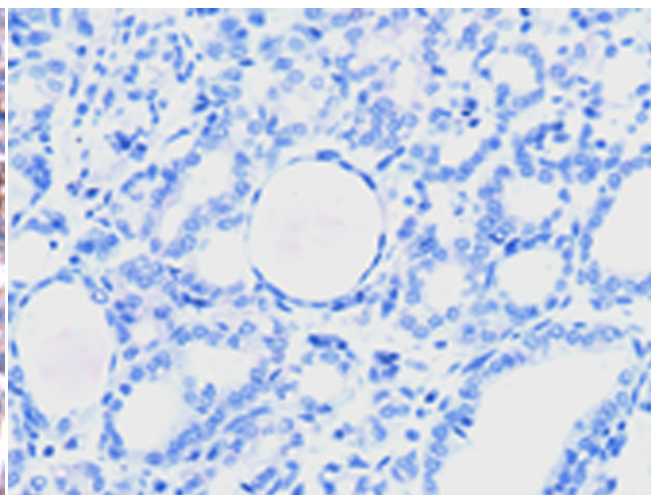
**成分:** PBS (without Mg<sup>2+</sup> and Ca<sup>2+</sup>), pH 7.4, 150 mM NaCl, 0.05% Sodium Azide and 40% glycerol

**研究领域:** Signal Transduction, Developmental Biology

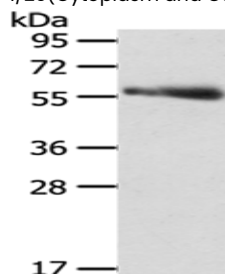
**储存和运输:** Store at -20°C. Avoid repeated freezing and thawing



Immunohistochemistry analysis of paraffin embedded Human thyroid cancer tissue using 211604 (SRPK3 Antibody) at a dilution of 1/20 (Cytoplasm and Cell membrane).



In comparison with the IHC on the left, the same paraffin-embedded Human thyroid cancer tissue is first treated with the fusion protein and then with 211604 (Anti-SRPK3 Antibody) at dilution 1/20.



Gel: 8% SDS-PAGE, Lysate: 40 µg;  
Lane: Human thyroid cancer tissue;  
Primary antibody: 211604 (SRPK3 Antibody) at dilution 1/300;  
Secondary antibody: Goat anti rabbit IgG at 1/8000 dilution;  
Exposure time: 3 minutes