

SRPK1 RABBIT PAB

货号: S217818

产品全名: SRPK1 兔多抗

基因符号: SFRSK1

UNIPROT ID: Q96SB4 (Gene Accession - BC038292)

背景: This gene encodes a serine/arginine protein kinase specific for the SR (serine/arginine-rich domain) family of splicing factors. The protein localizes to the nucleus and the cytoplasm. It is thought to play a role in regulation of both constitutive and alternative splicing by regulating intracellular localization of splicing factors. Alternative splicing of this gene results in multiple transcript variants.

抗原: Fusion protein of human SRPK1

经过测试的应用: ELISA, IHC

推荐稀释比: IHC: 30-150; ELISA: 2000-10000

种属反应性: Rabbit

克隆性: Rabbit Polyclonal

亚型: Immunogen-specific rabbit IgG

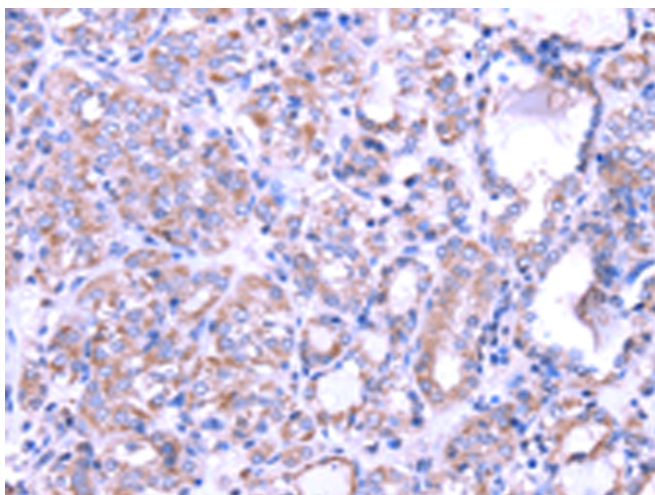
纯化: Antigen affinity purification

种属反应性: Human, Mouse

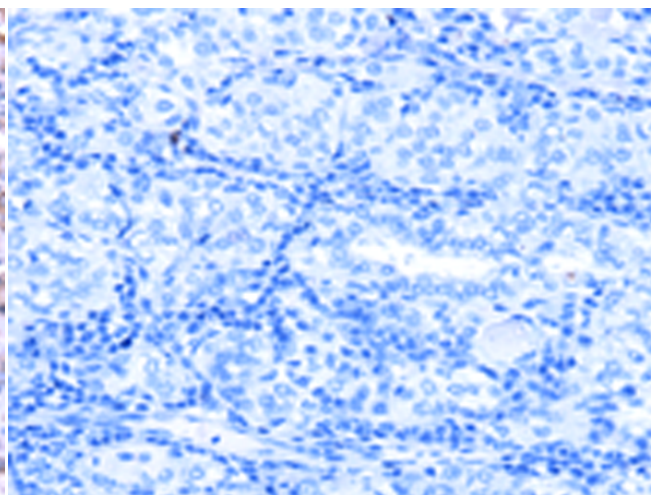
成分: PBS (without Mg²⁺ and Ca²⁺), pH 7.4, 150 mM NaCl, 0.05% Sodium Azide and 40% glycerol

研究领域: Epigenetics and Nuclear Signaling

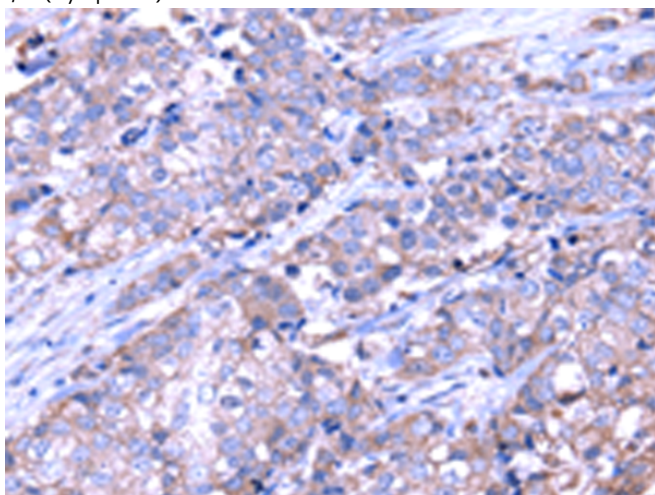
储存和运输: Store at -20°C. Avoid repeated freezing and thawing



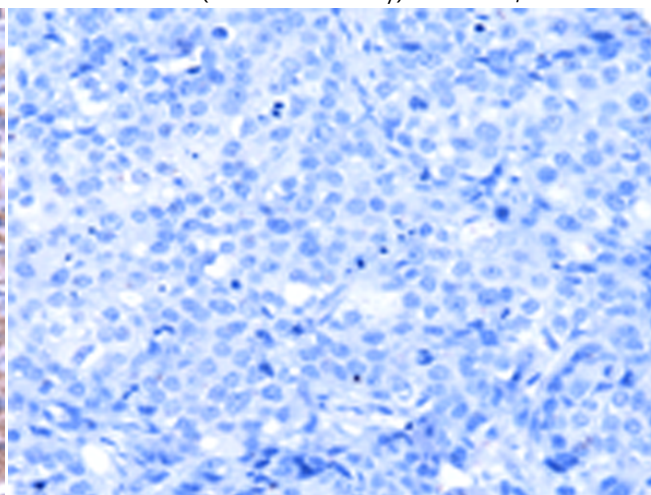
Immunohistochemistry analysis of paraffin embedded Human thyroid cancer tissue using 217818(SRPK1 Antibody) at a dilution of 1/35(Cytoplasm).



In comparison with the IHC on the left, the same paraffin-embedded Human thyroid cancer tissue is first treated with the fusion protein and then with 217818(Anti-SRPK1 Antibody) at dilution 1/35.



The image on the left is immunohistochemistry of paraffin-embedded Human breast cancer tissue using 217818(Anti-SRPK1 Antibody) at a dilution of 1/35.



In comparison with the IHC on the left, the same paraffin-embedded Human breast cancer tissue is first treated with fusion protein and then with D223152(Anti-SRPK1 Antibody) at dilution 1/35.



Product Description

Pioneering GTPase and Oncogene Product Development since 2010
