

SQSTM1/P62 RABBIT PAB

货号: N226064

产品全名: SQSTM1/p62 兔多抗

基因符号 p60; p62; A170; DMRV; OSIL; PDB3; ZIP3; p62B; NADGP; FTDALS3

UNIPROT ID: Q13501

背景: Autophagy receptor that interacts directly with both the cargo to become degraded and an autophagy modifier of the MAP1 LC3 family. Required both for the formation and autophagic degradation of polyubiquitin-containing bodies, called ALIS (aggresome-like induced structures) and links ALIS to the autophagic machinery. Involved in midbody ring degradation. May regulate the activation of NFKB1 by TNF-alpha, nerve growth factor (NGF) and interleukin-1.

抗原: A synthetic peptide of human SQSTM1/p62

经过测试的应用: WB, ICC/IF, FC

推荐稀释比: WB: 1/500-1/1000 IF: 1/50-1/200 FC: 1/50-1/100

种属反应性: Rabbit

克隆性: Rabbit Polyclonal

分子量: Calculated MW: 48 kDa; Observed MW: 62 kDa

亚型: IgG

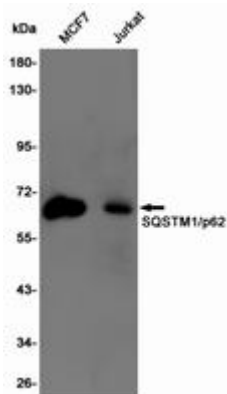
纯化: Affinity Purified

种属反应性: Human, Mouse

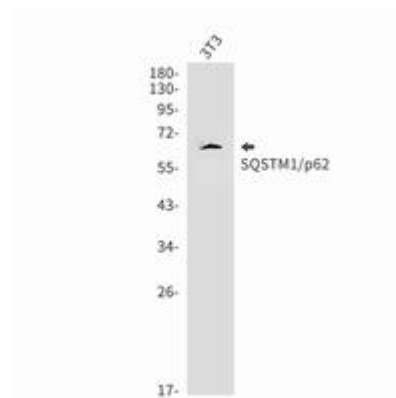
成分: PBS (without Mg²⁺ and Ca²⁺), pH 7.3 containing 50% glycerol, 0.5% BSA and 0.02% sodium azide

研究领域: Signal Transduction

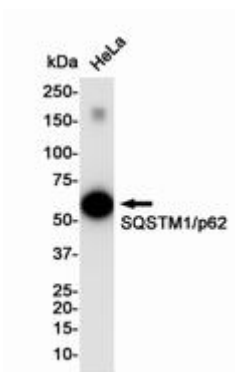
储存和运输: Store at -20°C. Avoid repeated freezing and thawing



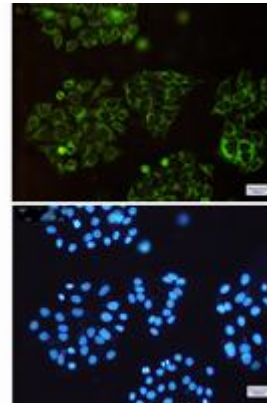
Western blot analysis of SQSTM1/p62 in MCF-7, Jurkat lysates using SQSTM1/p62 antibody



Western blot analysis of SQSTM1/p62 in 3T3 lysates using SQSTM1/p62 antibody.



Western blot analysis of SQSTM1/p62 in HeLa lysates using SQSTM1/p62 antibody.



Immunocytochemistry analysis of SQSTM1/p62 (green) in HeLa using SQSTM1/p62 antibody, and DAPI (blue).