

SQOR RABBIT PAB

货号: S218716

产品全名: SQOR 兔多抗

基因符号: SQR; SQRDL; CGI-44; PRO1975

UNIPROT ID: Q9Y6N5 (Gene Accession - BC016836)

背景: The protein encoded by this gene may function in mitochondria to catalyze the conversion of sulfide to persulfides, thereby decreasing toxic concentrations of sulfide. Alternative splicing results in multiple transcript variants that encode the same protein.

抗原: Fusion protein of human SQOR

经过测试的应用: ELISA, WB, IHC

推荐稀释比: IHC: 50-200;WB: 1000-5000;ELISA: 5000-10000

种属反应性: Rabbit

克隆性: Rabbit Polyclonal

亚型: Immunogen-specific rabbit IgG

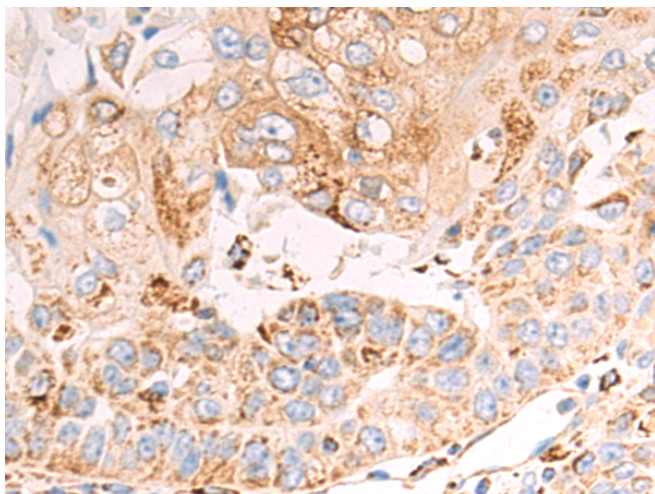
纯化: Antigen affinity purification

种属反应性: Human, Mouse

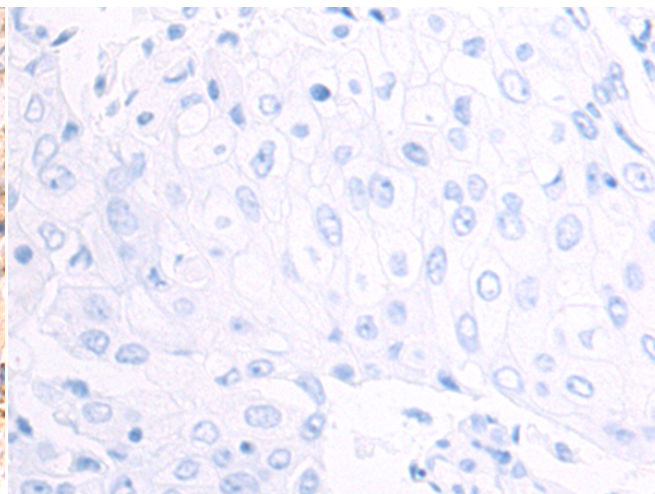
成分: PBS (without Mg²⁺ and Ca²⁺), pH 7.4, 150 mM NaCl, 0.05% Sodium Azide and 40% glycerol

研究领域: Signal Transduction, Metabolism

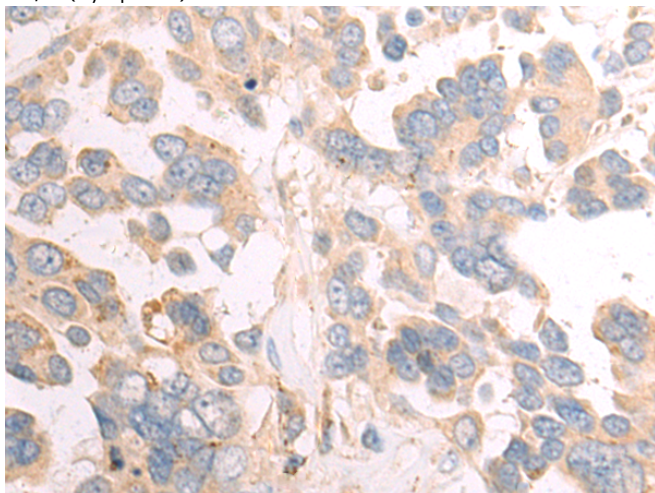
储存和运输: Store at -20°C. Avoid repeated freezing and thawing



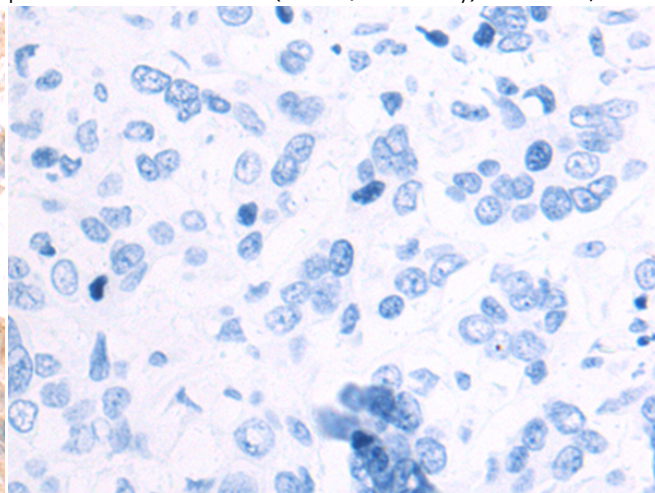
Immunohistochemistry analysis of paraffin embedded Human esophagus cancer tissue using 218716(SQOR Antibody) at a dilution of 1/85(Cytoplasm).



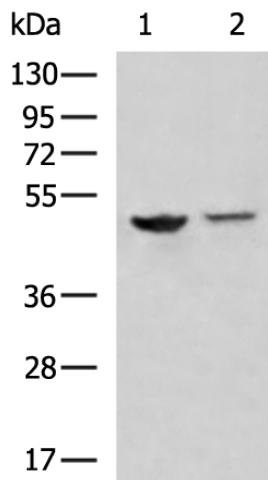
In comparison with the IHC on the left, the same paraffin-embedded Human esophagus cancer tissue is first treated with the fusion protein and then with 218716(Anti-SQOR Antibody) at dilution 1/85.



The image on the left is immunohistochemistry of paraffin-embedded Human colorectal cancer tissue using 218716(Anti-SQOR Antibody) at a dilution of 1/85.



In comparison with the IHC on the left, the same paraffin-embedded Human colorectal cancer tissue is first treated with fusion protein and then with D225053(Anti-SQOR Antibody) at dilution 1/85.



Gel: 8%SDS-PAGE, Lysate: 40 µg;
 Lane 1-2: HUVEC and A172 cell lysates;
 Primary antibody: 218716(SQOR Antibody) at dilution 1/1000;
 Secondary antibody: HRP-conjugated Goat anti rabbit IgG at 1/5000 dilution;
 Exposure time: 10 seconds



Product Description

Pioneering GTPase and Oncogene Product Development since 2010
