

SPTAN1 RABBIT PAB

货号: S220968

产品全名: SPTAN1 兔多抗

基因符号: NEAS; EIEE5; SPTA2

UNIPROT ID: Q13813 (Gene Accession - NP_003118)

背景: Spectrins are a family of filamentous cytoskeletal proteins that function as essential scaffold proteins that stabilize the plasma membrane and organize intracellular organelles. Spectrins are composed of alpha and beta dimers that associate to form tetramers linked in a head-to-head arrangement. This gene encodes an alpha spectrin that is specifically expressed in nonerythrocytic cells. The encoded protein has been implicated in other cellular functions including DNA repair and cell cycle regulation.

抗原: Synthetic peptide of human SPTAN1

经过测试的应用: ELISA, IHC

推荐稀释比: IHC: 30-150; ELISA: 2000-5000

种属反应性: Rabbit

克隆性: Rabbit Polyclonal

亚型: Immunogen-specific rabbit IgG

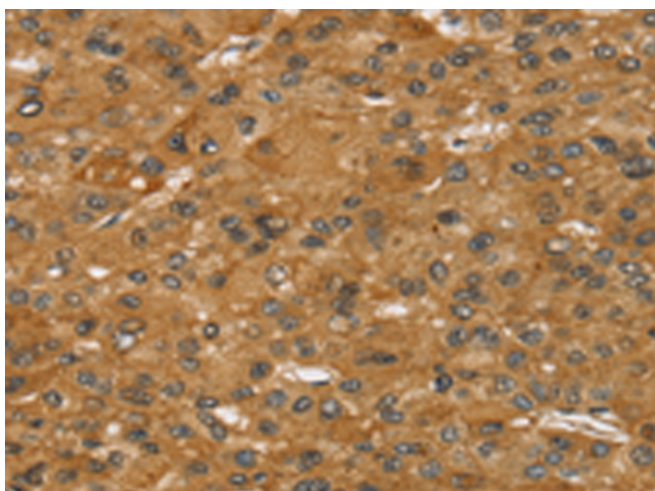
纯化: Antigen affinity purification

种属反应性: Human, Mouse, Rat

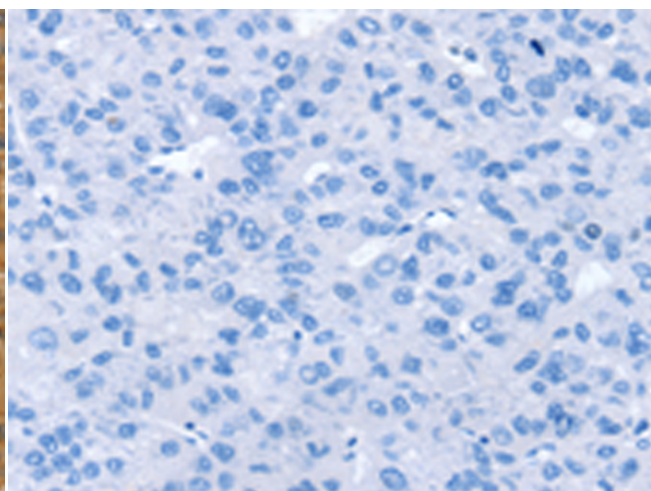
成分: PBS (without Mg²⁺ and Ca²⁺), pH 7.4, 150 mM NaCl, 0.05% Sodium Azide and 40% glycerol

研究领域: Signal Transduction, Neuroscience

储存和运输: Store at -20°C. Avoid repeated freezing and thawing



Immunohistochemistry analysis of paraffin embedded Human liver cancer tissue using 220968(SPTAN1 Antibody) at a dilution of 1/30(Cell membrane and Cytoplasm).



In comparison with the IHC on the left, the same paraffin-embedded Human liver cancer tissue is first treated with the synthetic peptide and then with 220968(Anti-SPTAN1 Antibody) at dilution 1/30.