

SPT5 RABBIT MAB

货号: N263558

产品全名: SPT5 兔单克隆抗体

基因符号 hSPT5; SPT5; SPT5H; supt5h; Tat CT1

UNIPROT ID: O00267

背景: Component of the DRB sensitivity-inducing factor complex (DSIF complex), which regulates mRNA processing and transcription elongation by RNA polymerase II.

抗原: A synthetic peptide of human SPT5

经过测试的应用: WB,IHC-F,IHC-P,ICC/IF

推荐稀释比: WB: 1/500-1/1000 IHC: 1/50-1/100 IF: 1/50-1/200

种属反应性: Rabbit

克隆性: Rabbit Monoclonal

克隆编号: R01-5C2

分子量: Calculated MW: 121 kDa; Observed MW: 150 kDa

亚型: IgG

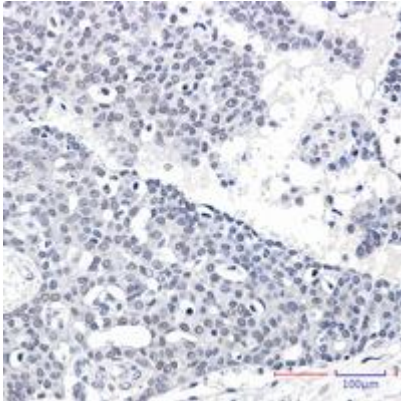
纯化: Affinity Purified

种属反应性: Human

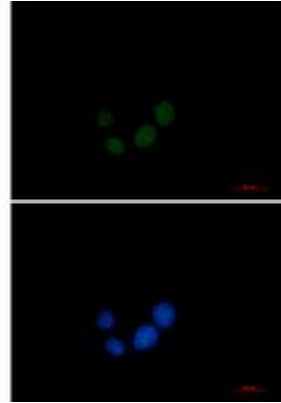
成分: PBS (without Mg²⁺ and Ca²⁺), pH 7.3 containing 50% glycerol, 0.5% BSA and 0.02% sodium azide

研究领域: Epigenetics and Nuclear Signaling

储存和运输: Store at -20°C. Avoid repeated freezing and thawing



Immunohistochemistry analysis of paraffin-embedded Human breast cancer tissue using SPT5 antibody. High-pressure and temperature Sodium Citrate pH 6.0 was used for antigen retrieval.



Immunocytochemistry analysis of SPT5 (green) in HeLa using SPT5 antibody, and DAPI (blue).



Western blot analysis of SPT5 in HeLa, A549, HL-60 lysates using SPT5 antibody.