

SPRY2 RABBIT PAB

货号: S217848

产品全名: SPRY2 兔多抗

基因符号: IGAN3; hSPRY2

UNIPROT ID: O43597 (Gene Accession - BC015745)

背景: This gene encodes a protein belonging to the sprouty family. The encoded protein contains a carboxyl-terminal cysteine-rich domain essential for the inhibitory activity on receptor tyrosine kinase signaling proteins and is required for growth factor stimulated translocation of the protein to membrane ruffles. In primary dermal endothelial cells this gene is transiently upregulated in response to fibroblast growth factor two. This protein is indirectly involved in the non-cell autonomous inhibitory effect on fibroblast growth factor two signaling. The protein interacts with Cas-Br-M (murine) ectropic retroviral transforming sequence, and can function as a bimodal regulator of epidermal growth factor receptor/mitogen-activated protein kinase signaling. This protein may play a role in alveoli branching during lung development as shown by a similar mouse protein.

抗原: Fusion protein of human SPRY2

经过测试的应用: ELISA, WB, IHC

推荐稀释比: IHC: 200-400;WB: 500-2000;ELISA: 5000-10000

种属反应性: Rabbit

克隆性: Rabbit Polyclonal

亚型: Immunogen-specific rabbit IgG

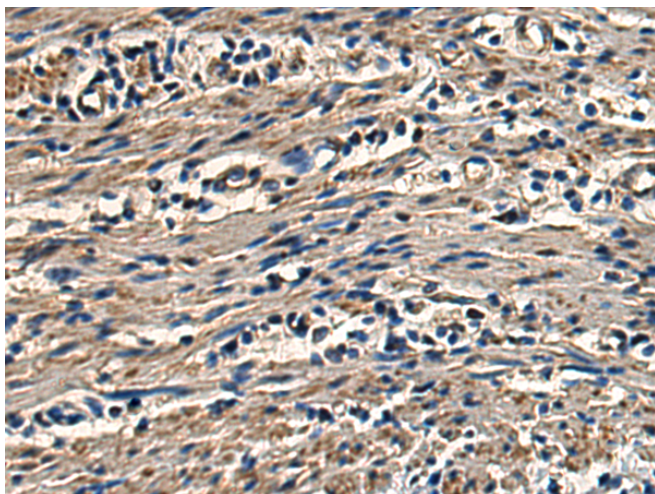
纯化: Antigen affinity purification

种属反应性: Human, Mouse

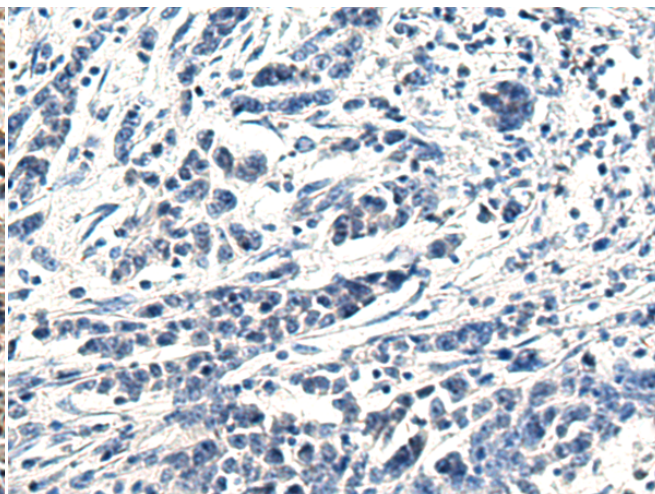
成分: PBS (without Mg²⁺ and Ca²⁺), pH 7.4, 150 mM NaCl, 0.05% Sodium Azide and 40% glycerol

研究领域: Neuroscience, Cardiovascular, Signal Transduction, Stem Cells

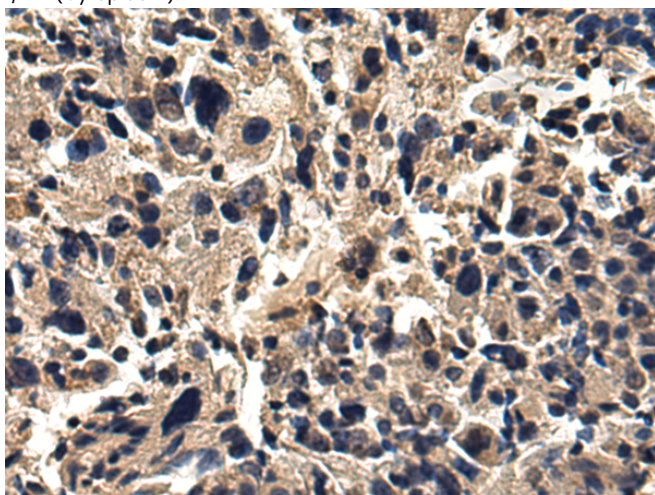
储存和运输: Store at -20°C. Avoid repeated freezing and thawing



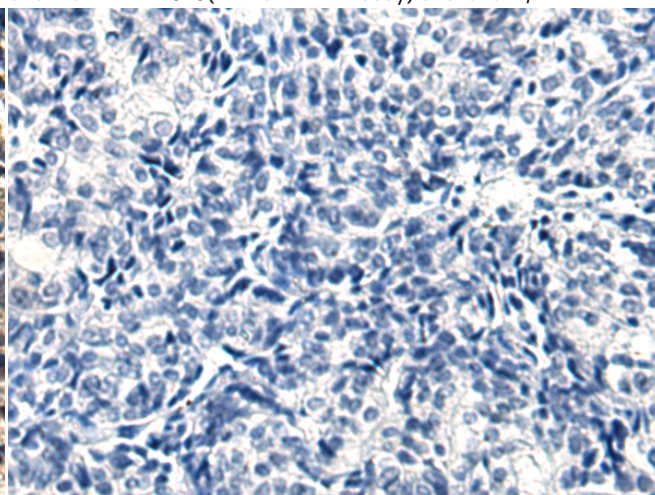
Immunohistochemistry analysis of paraffin embedded Human colorectal cancer tissue using 217848 (SPRY2 Antibody) at a dilution of 1/200 (Cytoplasm).



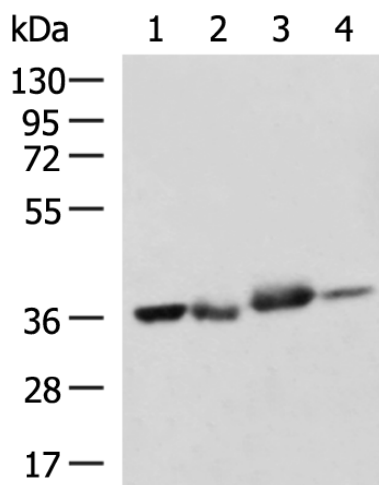
In comparison with the IHC on the left, the same paraffin-embedded Human colorectal cancer tissue is first treated with the fusion protein and then with 217848 (Anti-SPRY2 Antibody) at dilution 1/200.



The image on the left is immunohistochemistry of paraffin-embedded Human prostate cancer tissue using 217848 (Anti-SPRY2 Antibody) at a dilution of 1/200.



In comparison with the IHC on the left, the same paraffin-embedded Human prostate cancer tissue is first treated with fusion protein and then with D223217 (Anti-SPRY2 Antibody) at dilution 1/200.



Gel: 8%SDS-PAGE, Lysate: 40 µg;
 Lane 1-4: A172, LOVO, A375, HepG2 cell lysates;
 Primary antibody: 217848 (SPRY2 Antibody) at dilution 1/800;
 Secondary antibody: HRP-conjugated Goat anti rabbit IgG at 1/5000 dilution;
 Exposure time: 40 seconds



Product Description

Pioneering GTPase and Oncogene Product Development since 2010
