

SPIRE1 RABBIT PAB

货号: S218800

产品全名: SPIRE1 兔多抗

基因符号: Spir-1

UNIPROT ID: Q08AE8 (Gene Accession - BC016825)

背景: Spire proteins, such as SPIRE1, are highly conserved between species. They belong to the family of Wiskott-Aldrich homology region-2 (WH2) proteins, which are involved in actin organization (Kerhoff et al., 2001 [PubMed 11747823]).

抗原: Fusion protein of human SPIRE1

经过测试的应用: ELISA, WB, IHC

推荐稀释比: IHC: 50-300;WB: 200-1000;ELISA: 5000-10000

种属反应性: Rabbit

克隆性: Rabbit Polyclonal

亚型: Immunogen-specific rabbit IgG

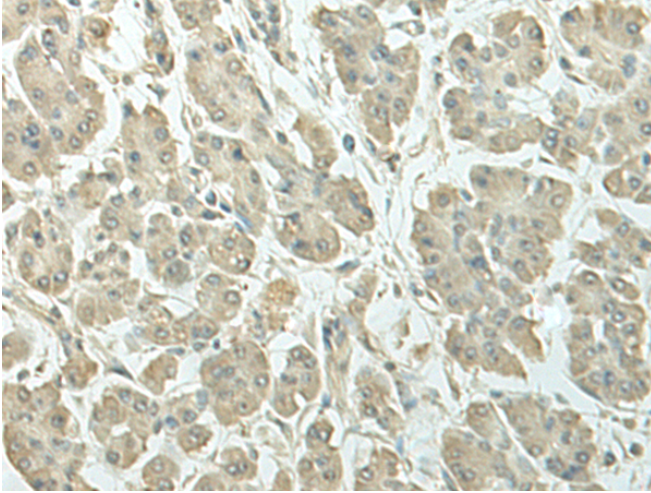
纯化: Antigen affinity purification

种属反应性: Human, Mouse

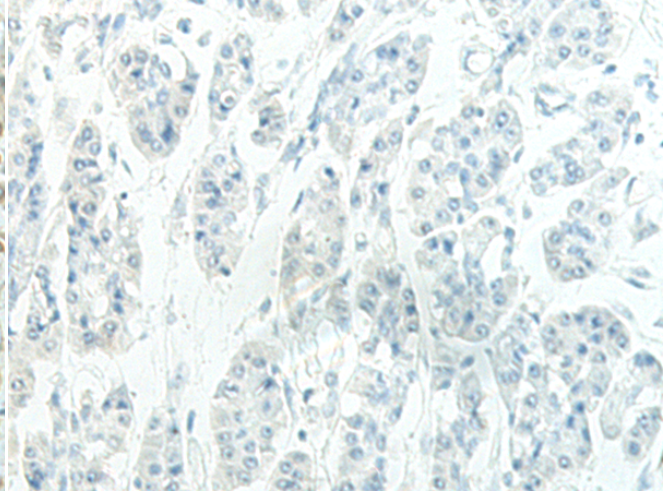
成分: PBS (without Mg²⁺ and Ca²⁺), pH 7.4, 150 mM NaCl, 0.05% Sodium Azide and 40% glycerol

研究领域: Signal Transduction

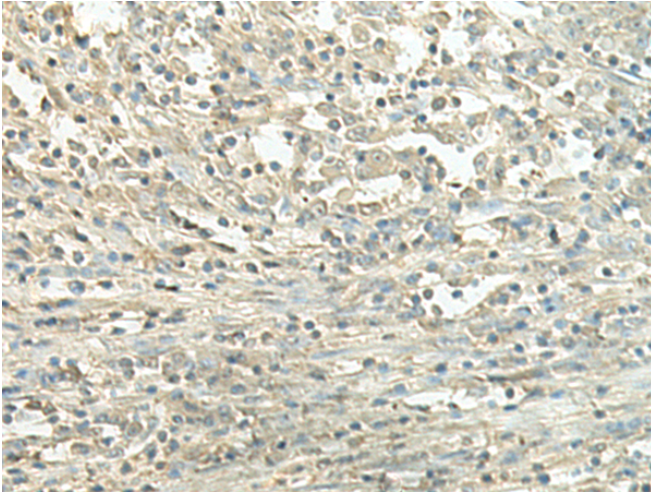
储存和运输: Store at -20°C. Avoid repeated freezing and thawing



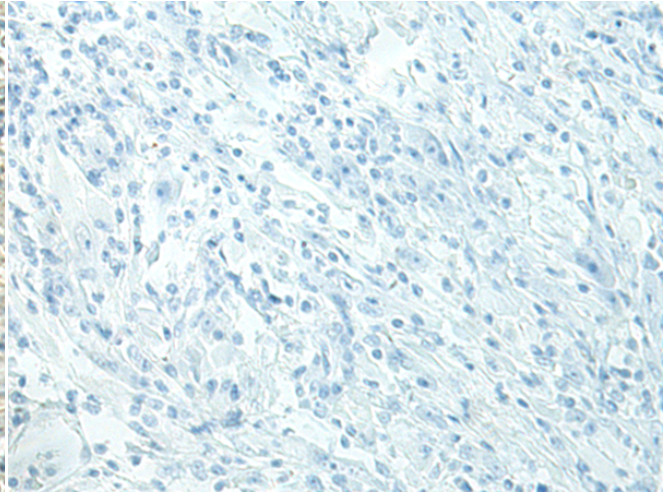
Immunohistochemistry analysis of paraffin embedded Human gastric cancer tissue using 218800(SPIRE1 Antibody) at a dilution of 1/50(Nucleus or Cytoplasm).



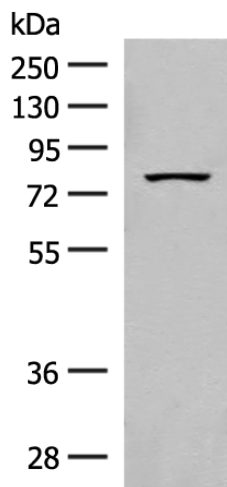
In comparison with the IHC on the left, the same paraffin-embedded Human gastric cancer tissue is first treated with the fusion protein and then with 218800(Anti-SPIRE1 Antibody) at dilution 1/50.



The image on the left is immunohistochemistry of paraffin-embedded Human liver cancer tissue using 218800(Anti-SPIRE1 Antibody) at a dilution of 1/50.



In comparison with the IHC on the left, the same paraffin-embedded Human liver cancer tissue is first treated with fusion protein and then with D225232(Anti-SPIRE1 Antibody) at dilution 1/50.



Gel: 8%SDS-PAGE, Lysate: 40 µg;
Lane: PC-3 cell lysate;
Primary antibody: 218800(SPIRE1 Antibody) at dilution 1/300;
Secondary antibody: Goat anti rabbit IgG at 1/8000 dilution;
Exposure time: 1 minute



Product Description

Pioneering GTPase and Oncogene Product Development since 2010
