

SPINK7 RABBIT PAB

货号: S221228

产品全名: SPINK7 兔多抗

基因符号 ECG2; ECRG2

UNIPROT ID: P58062 (Gene Accession - NP_115955)

背景: SPINK7 (serine peptidase inhibitor, Kazal type 7), also known as Ecg2 (esophagus cancer-related gene 2 protein), is a 76 amino acid secreted protein. Containing one Kazal-like domain, SPINK7 is thought to be a serine protease inhibitor. The gene that encodes SPINK7 maps to human chromosome 5, which contains 181 million base pairs encoding around 1,000 genes. Chromosome 5 is associated with Cockayne syndrome through the ERCC8 gene and familial adenomatous polyposis through the adenomatous polyposis coli (APC) tumor suppressor gene. Treacher Collins syndrome is also chromosome 5 associated and is caused by insertions or deletions within the TCOF1 gene. Deletion of the p arm of chromosome 5 leads to Cri du chat syndrome. Deletion of 5q or chromosome 5 altogether is common in therapy-related acute myelogenous leukemias and myelodysplastic syndrome. Probable serine protease inhibitor.

抗原: Synthetic peptide of human SPINK7

经过测试的应用: ELISA, IHC

推荐稀释比: IHC: 25-100; ELISA: 2000-5000

种属反应性: Rabbit

克隆性: Rabbit Polyclonal

亚型: Immunogen-specific rabbit IgG

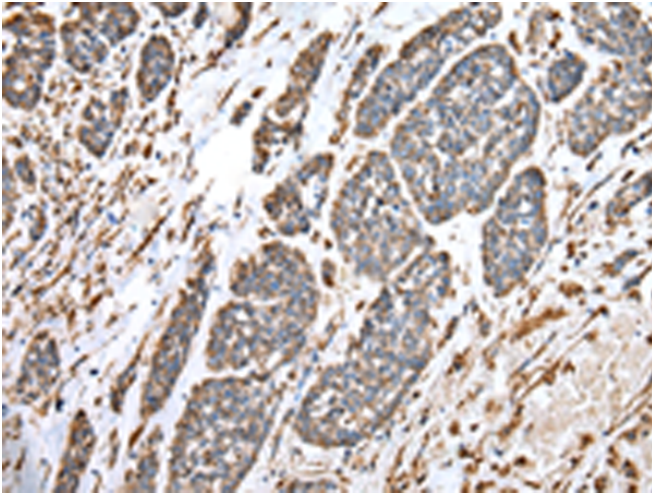
纯化: Antigen affinity purification

种属反应性: Human

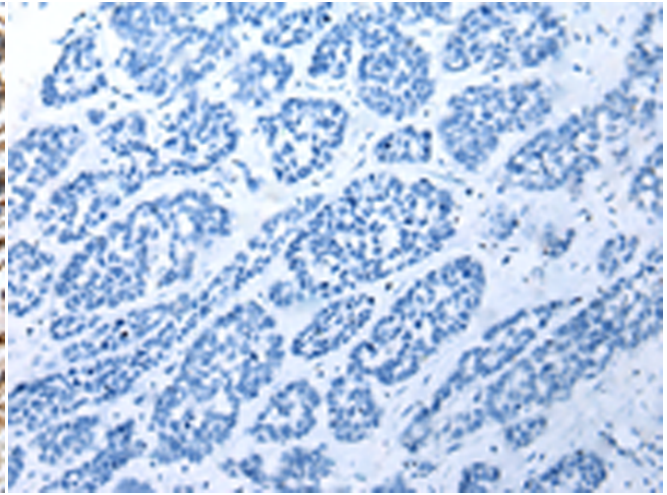
成分: PBS (without Mg²⁺ and Ca²⁺), pH 7.4, 150 mM NaCl, 0.05% Sodium Azide and 40% glycerol

研究领域: Signal Transduction, Cell Biology

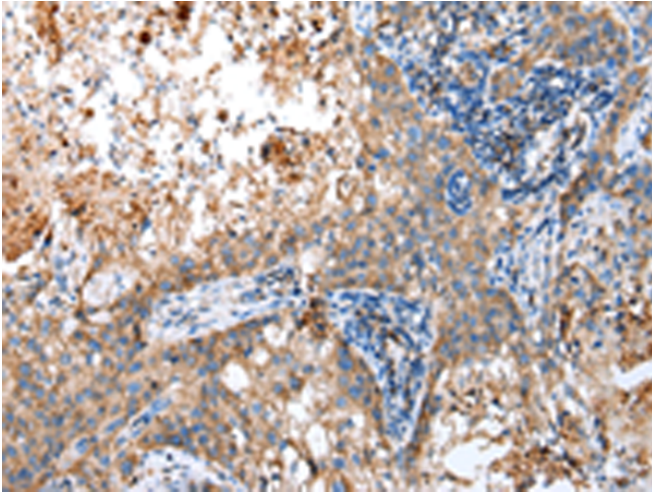
储存和运输: Store at -20°C. Avoid repeated freezing and thawing



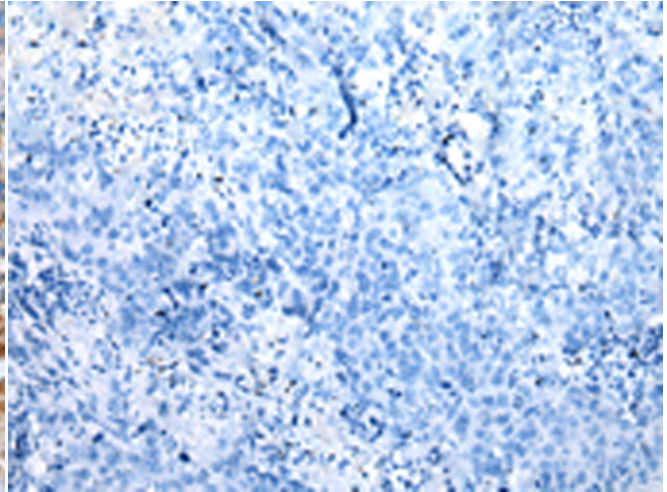
Immunohistochemistry analysis of paraffin embedded Human esophagus cancer tissue using 221228 (SPINK7 Antibody) at a dilution of 1/30 (Cytoplasm).



In comparison with the IHC on the left, the same paraffin-embedded Human esophagus cancer tissue is first treated with the synthetic peptide and then with 221228 (Anti-SPINK7 Antibody) at dilution 1/30.



The image on the left is immunohistochemistry of paraffin-embedded Human lung cancer tissue using 221228 (Anti-SPINK7 Antibody) at a dilution of 1/30.



In comparison with the IHC on the left, the same paraffin-embedded Human lung cancer tissue is first treated with synthetic peptide and then with D262736 (Anti-SPINK7 Antibody) at dilution 1/30.