

SPINK1 RABBIT PAB

货号: S222322

产品全名: Spink1 兔多抗

基因符号: Tlp; Psti-1; Spink1

UNIPROT ID: P09655 (Gene Accession - NP_036806)

背景: acts as a trypsin inhibitor to protect the pancreas from premature activation of pancreatic juice; has additional monitor peptide activity to induce cholecystokinin release in the intestine.

抗原: Synthetic peptide of Rat Spink1

经过测试的应用: ELISA, WB, IHC

推荐稀释比: IHC: 25-50;WB: 500-2000;ELISA: 5000-10000

种属反应性: Rabbit

克隆性: Rabbit Polyclonal

亚型: Immunogen-specific rabbit IgG

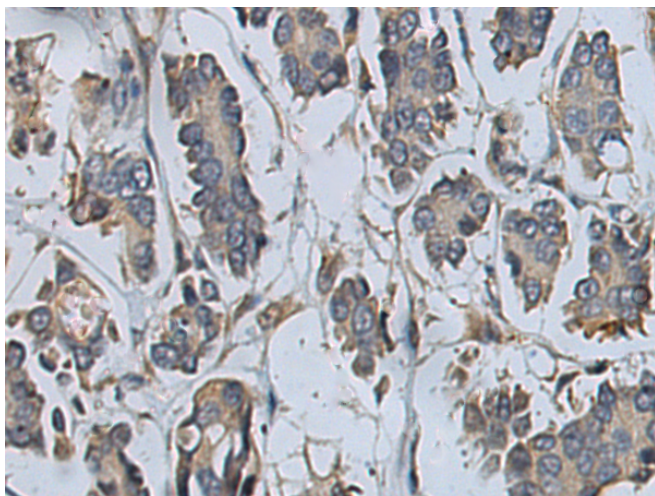
纯化: Antigen affinity purification

种属反应性: Human, Rat

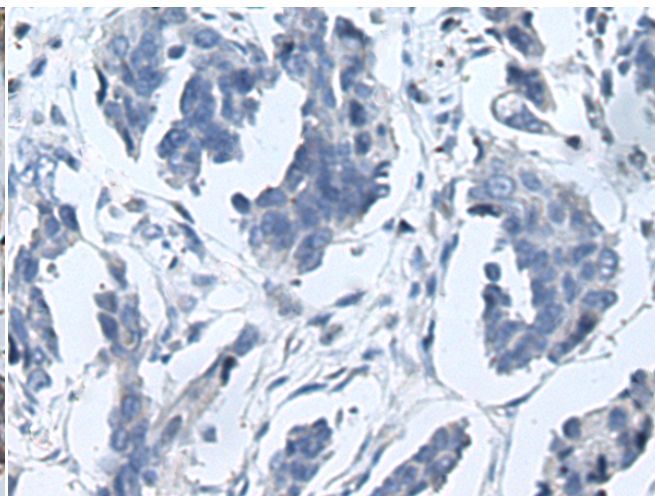
成分: PBS (without Mg²⁺ and Ca²⁺), pH 7.4, 150 mM NaCl, 0.05% Sodium Azide and 40% glycerol

研究领域: Cell Biology

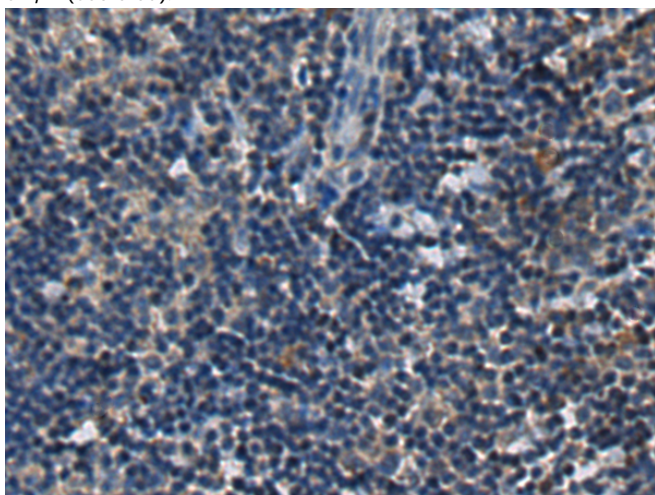
储存和运输: Store at -20°C. Avoid repeated freezing and thawing



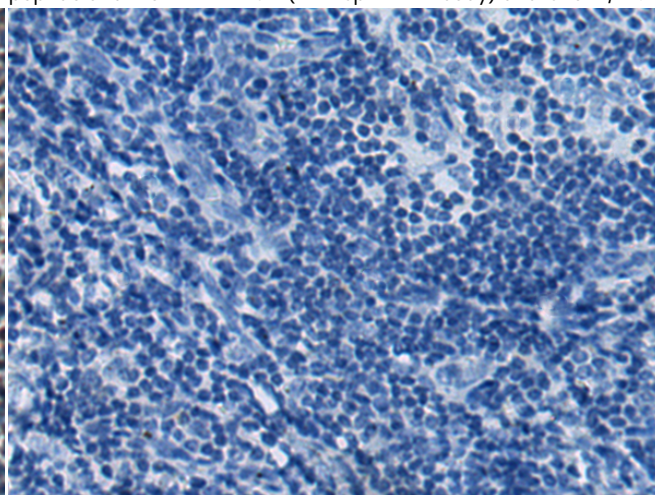
Immunohistochemistry analysis of paraffin embedded Human colorectal cancer tissue using 222322(Spink1 Antibody) at a dilution of 1/20(Secreted).



In comparison with the IHC on the left, the same paraffin-embedded Human colorectal cancer tissue is first treated with the synthetic peptide and then with 222322(Anti-Spink1 Antibody) at dilution 1/20.



The image on the left is immunohistochemistry of paraffin-embedded Human tonsil tissue using 222322(Anti-Spink1 Antibody) at a dilution of 1/20.



In comparison with the IHC on the left, the same paraffin-embedded Human tonsil tissue is first treated with synthetic peptide and then with D264388(Anti-Spink1 Antibody) at dilution 1/20.

kDa

72—
55—
36—
28—
17—
10—



Gel: 12%SDS-PAGE, Lysate: 40 µg;
Lane: Rat pancreas tissue lysate;
Primary antibody: 222322(Spink1 Antibody) at dilution 1/400;
Secondary antibody: HRP-conjugated Goat anti rabbit IgG at 1/5000 dilution;
Exposure time: 4 minutes



Product Description

Pioneering GTPase and Oncogene Product Development since 2010
