

SPIN4 RABBIT PAB

货号: S216802

产品全名: SPIN4 兔多抗

基因符号 TDRD28

UNIPROT ID: Q56A73 (Gene Accession - BC112360)

背景: Enables methylated histone binding activity. Predicted to be involved in regulation of transcription, DNA-templated. Predicted to be active in cytosol and nucleoplasm.

抗原: Fusion protein of human SPIN4

经过测试的应用: ELISA, WB, IHC

推荐稀释比: IHC: 50-100;WB: 1000-5000;ELISA: 5000-10000

种属反应性: Rabbit

克隆性: Rabbit Polyclonal

亚型: Immunogen-specific rabbit IgG

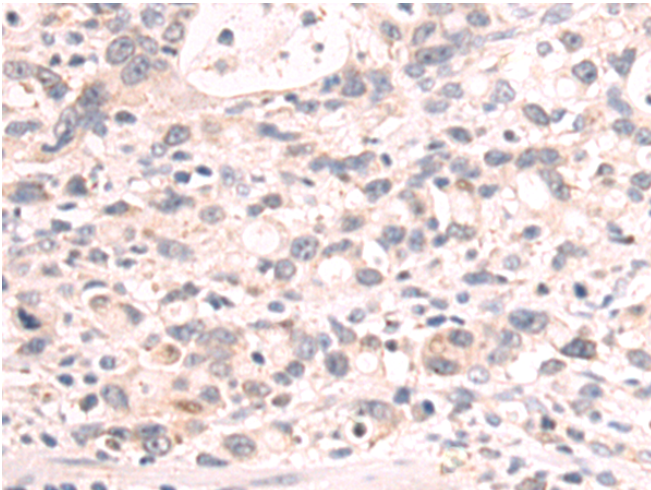
纯化: Antigen affinity purification

种属反应性: Human, Mouse

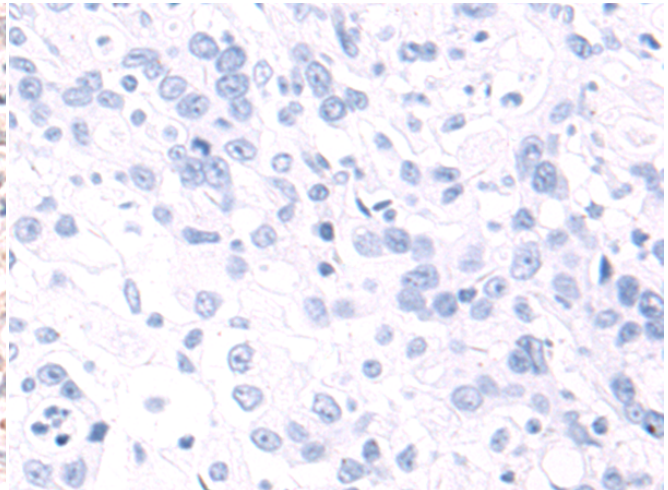
成分: PBS (without Mg²⁺ and Ca²⁺), pH 7.4, 150 mM NaCl, 0.05% Sodium Azide and 40% glycerol

研究领域: Cell Biology

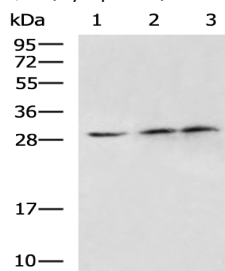
储存和运输: Store at -20°C. Avoid repeated freezing and thawing



Immunohistochemistry analysis of paraffin embedded Human gastric cancer tissue using 216802 (SPIN4 Antibody) at a dilution of 1/60 (Cytoplasm).



In comparison with the IHC on the left, the same paraffin-embedded Human gastric cancer tissue is first treated with the fusion protein and then with 216802 (Anti-SPIN4 Antibody) at dilution 1/60.



Gel: 12%SDS-PAGE, Lysate: 40 µg;

Lane 1-3: Human placenta tissue, Mouse large intestine tissue, Mouse fetal brain tissue lysates;

Primary antibody: 216802 (SPIN4 Antibody) at dilution 1/1000;

Secondary antibody: HRP-conjugated Goat anti rabbit IgG at 1/5000 dilution;

Exposure time: 3 minutes