

SPIN2B RABBIT PAB

货号: S216803

产品全名: SPIN2B 兔多抗

基因符号 SPIN-2; TDRD26; SPIN-2B; dJ323P24.2; SPIN2_duplicate

UNIPROT ID: Q9BPZ2 (Gene Accession - BC000044)

背景: Involved in the regulation of cell cycle progression, this activity is related to the inhibition of apoptosis following the removal of essential growth factors. Exhibits H3K4me3-binding activity.

抗原: Fusion protein of human SPIN2B

经过测试的应用: ELISA, WB, IHC

推荐稀释比: IHC: 50-200;WB: 500-2000;ELISA: 5000-10000

种属反应性: Rabbit

克隆性: Rabbit Polyclonal

亚型: Immunogen-specific rabbit IgG

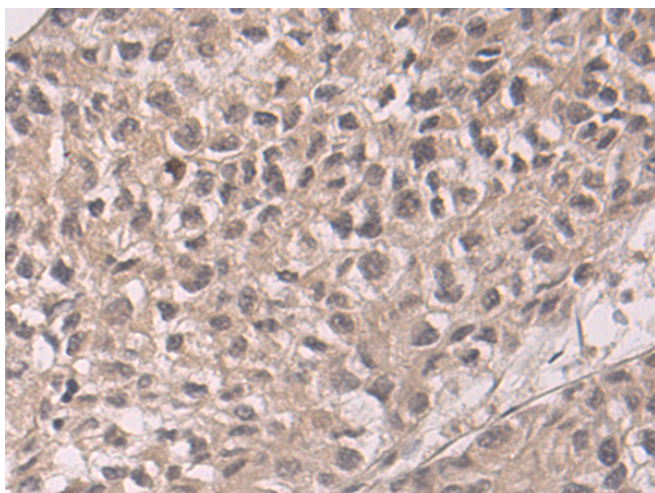
纯化: Antigen affinity purification

种属反应性: Human

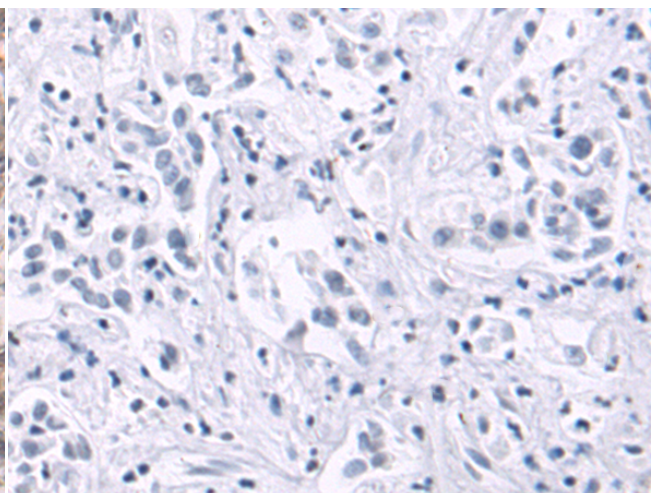
成分: PBS (without Mg²⁺ and Ca²⁺), pH 7.4, 150 mM NaCl, 0.05% Sodium Azide and 40% glycerol

研究领域: Epigenetics and Nuclear Signaling

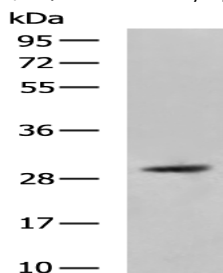
储存和运输: Store at -20°C. Avoid repeated freezing and thawing



Immunohistochemistry analysis of paraffin embedded Human liver cancer tissue using 216803 (SPIN2B Antibody) at a dilution of 1/50 (Nucleus and Cytoplasm).



In comparison with the IHC on the left, the same paraffin-embedded Human liver cancer tissue is first treated with the fusion protein and then with 216803 (Anti-SPIN2B Antibody) at dilution 1/50.



Gel: 8%SDS-PAGE, Lysate: 40 µg;

Lane: HeLa cell lysate;

Primary antibody: 216803 (SPIN2B Antibody) at dilution 1/500;

Secondary antibody: HRP-conjugated Goat anti rabbit IgG at 1/5000 dilution;

Exposure time: 30 seconds