

SPIN1 RABBIT PAB

货号: S216801

产品全名: SPIN1 兔多抗

基因符号: SPIN; TDRD24

UNIPROT ID: Q9Y657 (Gene Accession - BC013571)

背景: Chromatin reader that specifically recognizes and binds histone H3 both trimethylated at 'Lys-4' and asymmetrically dimethylated at 'Arg-8' (H3K4me3 and H3R8me2a) and acts as an activator of Wnt signaling pathway downstream of PRMT2. In case of cancer, promotes cell cancer proliferation via activation of the Wnt signaling pathway (PubMed:24589551). Overexpression induces metaphase arrest and chromosomal instability. Localizes to active rDNA loci and promotes the expression of rRNA genes (PubMed:21960006). May play a role in cell-cycle regulation during the transition from gamete to embryo. Involved in oocyte meiotic resumption, a process that takes place before ovulation to resume meiosis of oocytes blocked in prophase I; may act by regulating maternal transcripts to control meiotic resumption.

抗原: Fusion protein of human SPIN1

经过测试的应用: ELISA, WB, IHC

推荐稀释比: IHC: 50-200;WB: 500-2000;ELISA: 5000-10000

种属反应性: Rabbit

克隆性: Rabbit Polyclonal

亚型: Immunogen-specific rabbit IgG

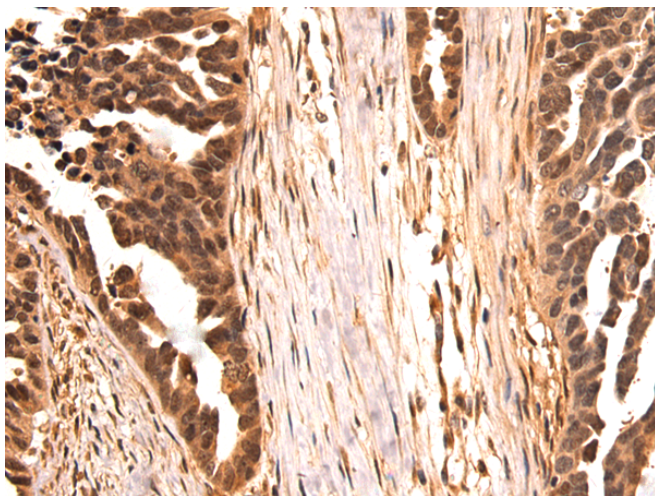
纯化: Antigen affinity purification

种属反应性: Human, Mouse, Rat

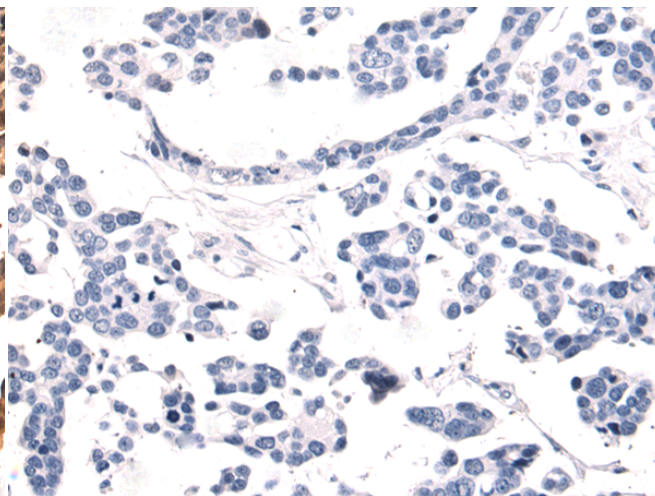
成分: PBS (without Mg²⁺ and Ca²⁺), pH 7.4, 150 mM NaCl, 0.05% Sodium Azide and 40% glycerol

研究领域: Cancer, Epigenetics and Nuclear Signaling, Developmental Biology

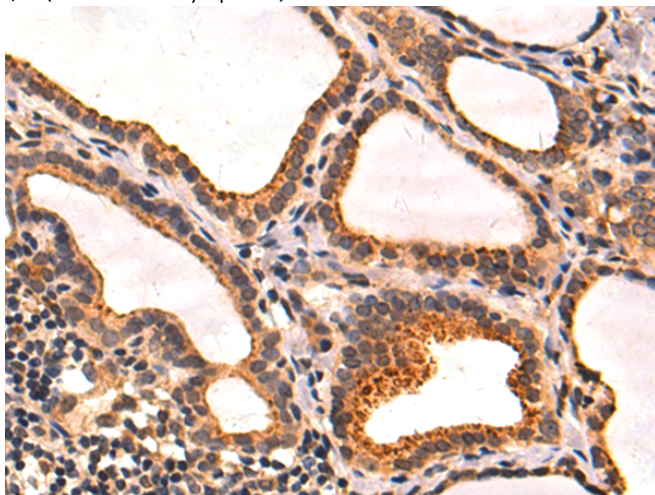
储存和运输: Store at -20°C. Avoid repeated freezing and thawing



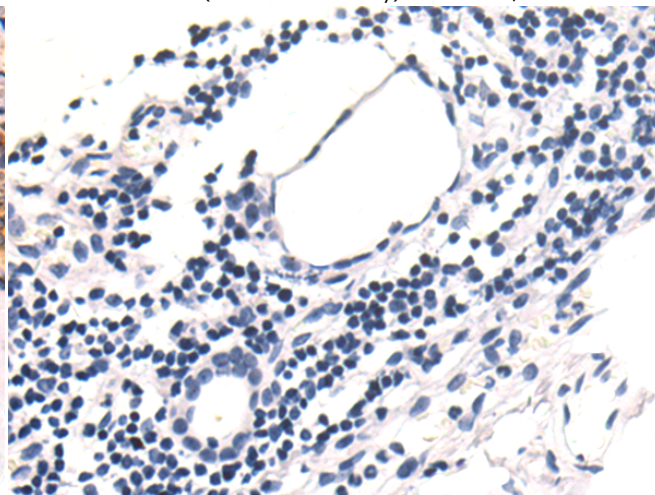
Immunohistochemistry analysis of paraffin embedded Human colorectal cancer tissue using 216801 (SPINI Antibody) at a dilution of 1/50 (Nucleus and Cytoplasm).



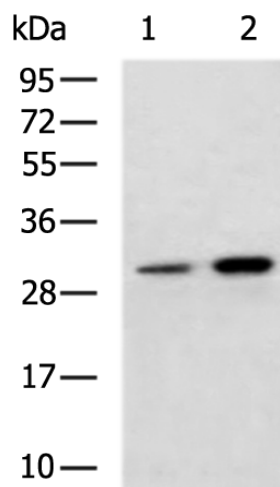
In comparison with the IHC on the left, the same paraffin-embedded Human colorectal cancer tissue is first treated with the fusion protein and then with 216801 (Anti-SPINI Antibody) at dilution 1/50.



The image on the left is immunohistochemistry of paraffin-embedded Human thyroid cancer tissue using 216801 (Anti-SPINI Antibody) at a dilution of 1/50.



In comparison with the IHC on the left, the same paraffin-embedded Human thyroid cancer tissue is first treated with fusion protein and then with D221263 (Anti-SPINI Antibody) at dilution 1/50.



Gel: 8% SDS-PAGE, Lysate: 40 µg;
 Lane 1-2: Jurkat, 293T cell lysates;
 Primary antibody: 216801 (SPINI Antibody) at dilution 1/600;
 Secondary antibody: HRP-conjugated Goat anti rabbit IgG at 1/5000 dilution;
 Exposure time: 30 seconds



Product Description

Pioneering GTPase and Oncogene Product Development since 2010
