

SPI1 RABBIT MAB

货号: N263514

产品全名: SPI1 兔单克隆抗体

基因符号 Dis1; PU.1; Dis-1; Sfpil; Spi-1; Sfpil; Tcfpu.1

UNIPROT ID: P17433

背景: Binds to the PU-box, a purine-rich DNA sequence (5'-GAGGAA-3') that can act as a lymphoid-specific enhancer. This protein is a transcriptional activator that may be specifically involved in the differentiation or activation of macrophages or B-cells. Also binds RNA and may modulate pre-mRNA splicing.

抗原: A synthetic peptide of mouse PU.1/Spi1

经过测试的应用: WB,IHC-F,IHC-P,ICC/IF,IP

推荐稀释比: WB: 1/500-1/1000 IHC: 1/50-1/100 IF: 1/50-1/200 IP: 1/20

种属反应性: Rabbit

克隆性: Rabbit Monoclonal

克隆编号: R02-1D7

分子量: Calculated MW: 31 kDa; Observed MW: 31 kDa

亚型: IgG

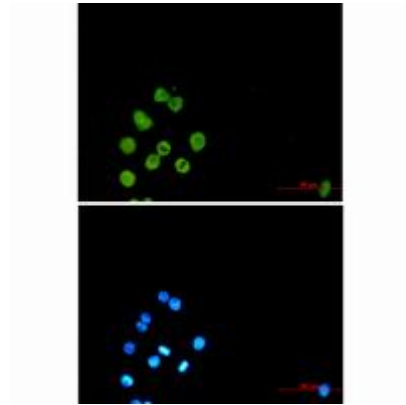
纯化: Affinity Purified

种属反应性: Human,Mouse,Hamster,Rat

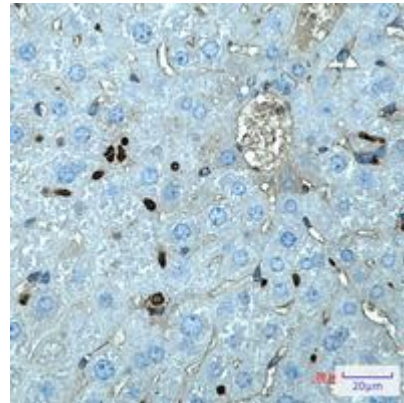
成分: PBS (without Mg²⁺ and Ca²⁺), pH 7.3 containing 50% glycerol, 0.5% BSA and 0.02% sodium azide

研究领域: Immunology

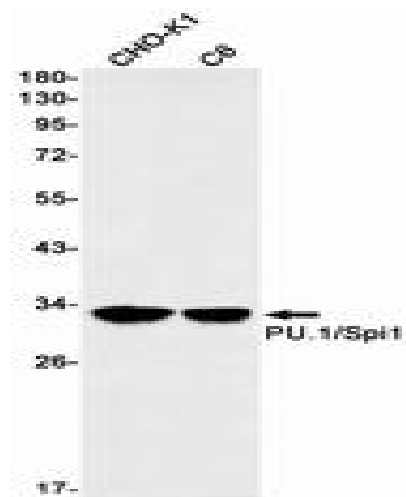
储存和运输: Store at -20°C. Avoid repeated freezing and thawing



Immunocytochemistry analysis of PU.1/Spi1 (green) in Raw264.7 using PU.1/Spi1 antibody, and DAPI (blue)



Immunohistochemistry analysis of paraffin-embedded mouse liver using SPI1 antibody. High-pressure and temperature Sodium Citrate pH 6.0 was used for antigen retrieval.



Western blot analysis of PU.1/Spi1 in CHO-K1, C6 lysates using PU.1/Spi1 antibody.