

## SPDL1 RABBIT PAB

货号: S216804

产品全名: SPDL1 兔多抗

基因符号: CCDC99

**UNIPROT ID:** Q96EA4 (Gene Accession - BC012568 )

**背景:** This gene encodes a coiled-coil domain-containing protein that functions in mitotic spindle formation and chromosome segregation. The encoded protein plays a role in coordinating microtubule attachment by promoting recruitment of dynein proteins, and in mitotic checkpoint signaling.

**抗原:** Fusion protein of human SPDL1

**经过测试的应用:** ELISA, WB, IHC

**推荐稀释比:** IHC: 100-200;WB: 500-2000;ELISA: 5000-10000

**种属反应性:** Rabbit

**克隆性:** Rabbit Polyclonal

**亚型:** Immunogen-specific rabbit IgG

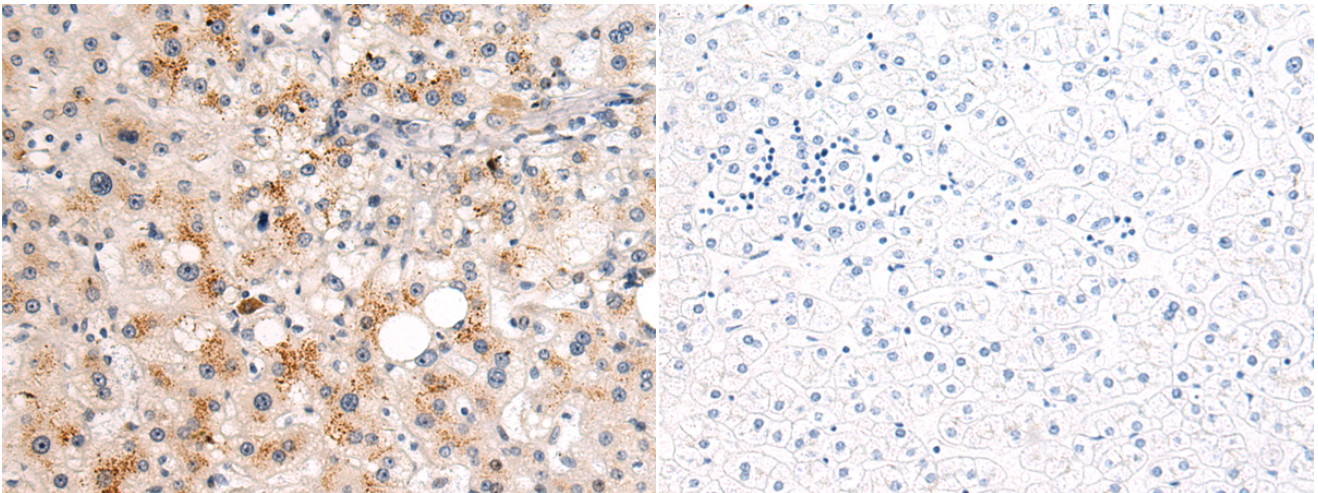
**纯化:** Antigen affinity purification

**种属反应性:** Human, Mouse

**成分:** PBS (without Mg<sup>2+</sup> and Ca<sup>2+</sup>), pH 7.4, 150 mM NaCl, 0.05% Sodium Azide and 40% glycerol

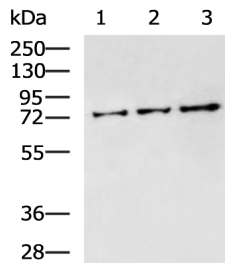
**研究领域:** Cell Biology

**储存和运输:** Store at -20°C. Avoid repeated freezing and thawing



Immunohistochemistry analysis of paraffin embedded Human liver cancer tissue using 216804(SPDL1 Antibody) at a dilution of 1/110(Cytoplasm).

In comparison with the IHC on the left, the same paraffin-embedded Human liver cancer tissue is first treated with the fusion protein and then with 216804(Anti-SPDL1 Antibody) at dilution 1/110.



Gel: 8%SDS-PAGE, Lysate: 40 µg;

Lane 1-3: K562 cell, Mouse testis tissue, 293T cell lysates;

Primary antibody: 216804(SPDL1 Antibody) at dilution 1/800;

Secondary antibody: HRP-conjugated Goat anti rabbit IgG at 1/5000 dilution;

Exposure time: 5 minutes