

## SPCS2 RABBIT PAB

货号: S218130

产品全名: SPCS2 兔多抗

基因符号

**UNIPROT ID:** Q15005 (Gene Accession - BC082231)

**背景:** SPCS2 (signal peptidase complex subunit 2), also known as SPC25 or microsomal signal peptidase 25 kDa subunit, is a 226 amino acid multi-pass membrane protein that localizes to both the microsome and the endoplasmic reticulum (ER), and belongs to the SPCS (signal peptidase complex subunit) family. Existing as a component of the microsomal signal peptidase complex which consists of five members, SPCS2 removes signal peptides from nascent proteins as they are translocated into the lumen of the ER. The gene encoding SPCS2 is located on human chromosome 11, which houses over 1,400 genes and comprises nearly 4% of the human genome.

**抗原:** Fusion protein of human SPCS2

**经过测试的应用:** ELISA, WB, IHC

**推荐稀释比:** IHC: 30-150;WB: 500-2000;ELISA: 5000-10000

**种属反应性:** Rabbit

**克隆性:** Rabbit Polyclonal

**亚型:** Immunogen-specific rabbit IgG

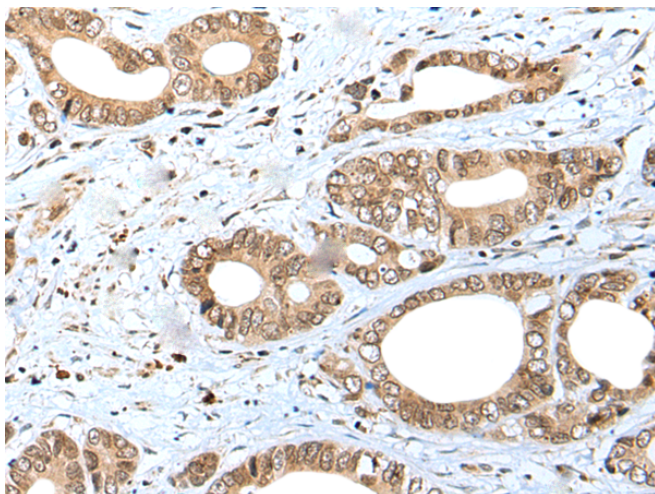
**纯化:** Antigen affinity purification

**种属反应性:** Human, Mouse, Rat

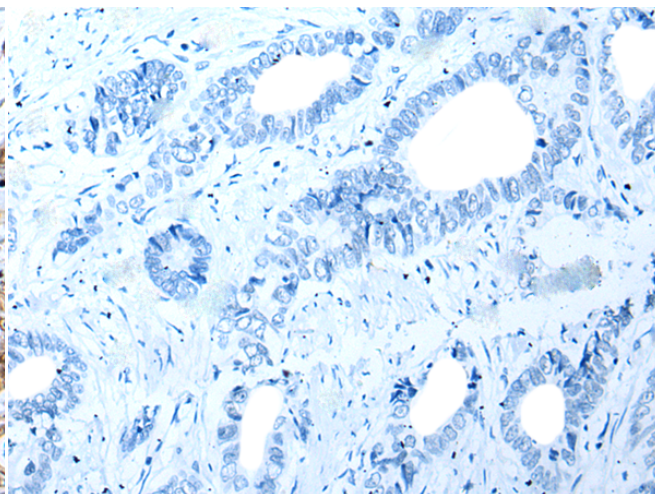
**成分:** PBS (without Mg<sup>2+</sup> and Ca<sup>2+</sup>), pH 7.4, 150 mM NaCl, 0.05% Sodium Azide and 40% glycerol

**研究领域:** Signal Transduction

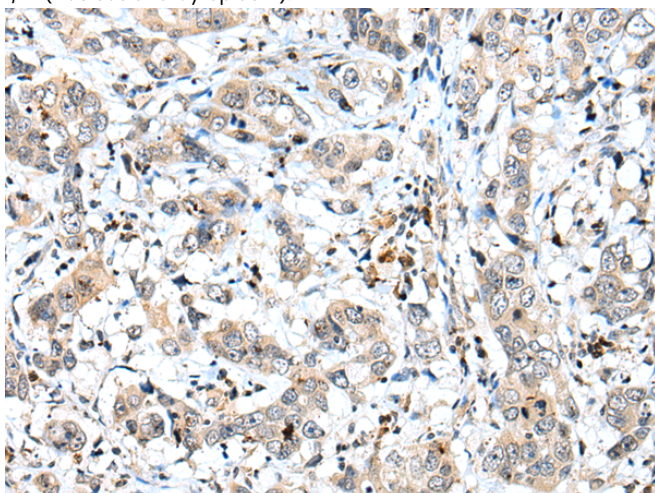
**储存和运输:** Store at -20°C. Avoid repeated freezing and thawing



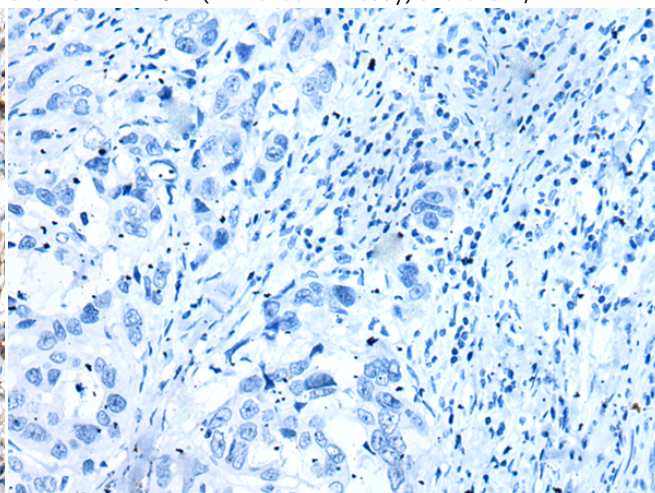
Immunohistochemistry analysis of paraffin embedded Human gastric cancer tissue using 218130 (SPCS2 Antibody) at a dilution of 1/40 (Nucleus and Cytoplasm).



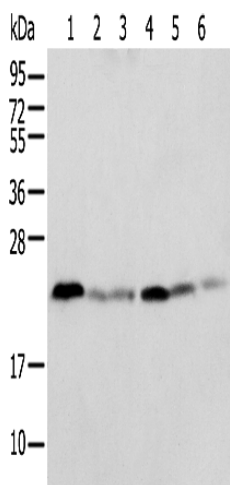
In comparison with the IHC on the left, the same paraffin-embedded Human gastric cancer tissue is first treated with the fusion protein and then with 218130 (Anti-SPCS2 Antibody) at dilution 1/40.



The image on the left is immunohistochemistry of paraffin-embedded Human breast cancer tissue using 218130 (Anti-SPCS2 Antibody) at a dilution of 1/40.



In comparison with the IHC on the left, the same paraffin-embedded Human breast cancer tissue is first treated with fusion protein and then with D223784 (Anti-SPCS2 Antibody) at dilution 1/40.



Gel: 12% SDS-PAGE, Lysate: 40 µg;  
 Lane 1-6: K-562 cell, Human placenta tissue, Mouse adrenal gland tissue, HT-29 cell, NIH/3T3 cell, Rat lung tissue;  
 Primary antibody: 218130 (SPCS2 Antibody) at dilution 1/500;  
 Secondary antibody: Goat anti rabbit IgG at 1/8000 dilution;  
 Exposure time: 3 seconds



# Product Description

Pioneering GTPase and Oncogene Product Development since 2010

---