

SPATA7 RABBIT PAB

货号: S216812

产品全名: SPATA7 兔多抗

基因符号: HSD3; LCA3; HSD-3.1; HEL-S-296

UNIPROT ID: Q9P0W8 (Gene Accession - BC008656)

背景: This gene, originally isolated from testis, is also expressed in retina. Mutations in this gene are associated with Leber congenital amaurosis and juvenile retinitis pigmentosa. Alternatively spliced transcript variants encoding different isoforms have been found for this gene.

抗原: Fusion protein of human SPATA7

经过测试的应用: ELISA, WB, IHC

推荐稀释比: IHC: 50-200;WB: 200-1000;ELISA: 5000-10000

种属反应性: Rabbit

克隆性: Rabbit Polyclonal

亚型: Immunogen-specific rabbit IgG

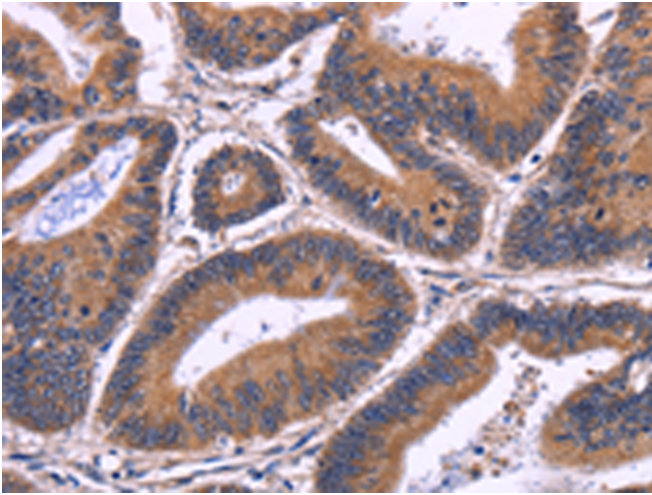
纯化: Antigen affinity purification

种属反应性: Human

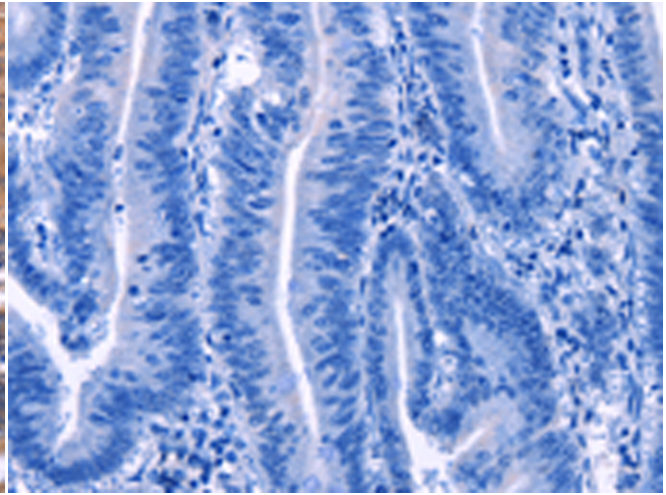
成分: PBS (without Mg²⁺ and Ca²⁺), pH 7.4, 150 mM NaCl, 0.05% Sodium Azide and 40% glycerol

研究领域: Neuroscience

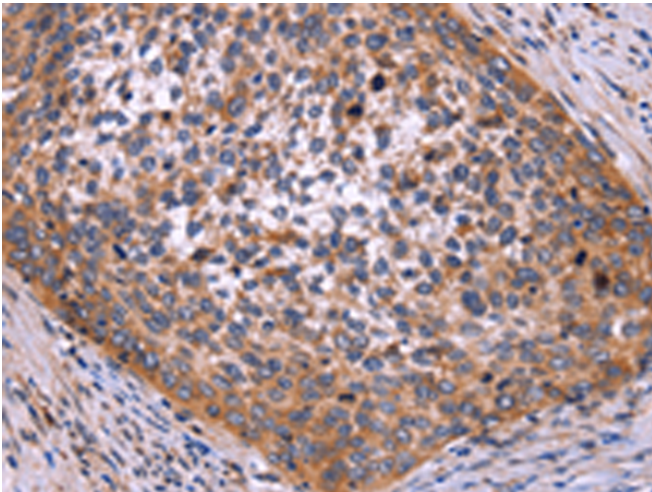
储存和运输: Store at -20°C. Avoid repeated freezing and thawing



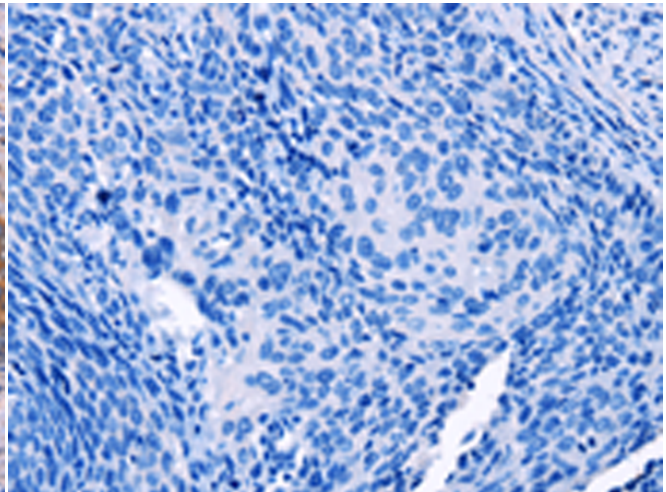
Immunohistochemistry analysis of paraffin embedded Human colon cancer tissue using 216812(SPATA7 Antibody) at a dilution of 1/30(cytoplasm).



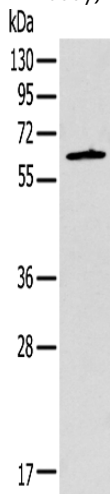
In comparison with the IHC on the left, the same paraffin-embedded Human colon cancer tissue is first treated with the fusion protein and then with 216812(Anti-SPATA7 Antibody) at dilution 1/30.



The image on the left is immunohistochemistry of paraffin-embedded Human cervical cancer tissue using 216812(Anti-SPATA7 Antibody) at a dilution of 1/30.



In comparison with the IHC on the left, the same paraffin-embedded Human cervical cancer tissue is first treated with fusion protein and then with D221282(Anti-SPATA7 Antibody) at dilution 1/30.



Gel: 8%SDS-PAGE, Lysate: 40 µg;
Lane: 231 cell;
Primary antibody: 216812(SPATA7 Antibody) at dilution 1/250;
Secondary antibody: Goat anti rabbit IgG at 1/8000 dilution;
Exposure time: 1 minute



Product Description

Pioneering GTPase and Oncogene Product Development since 2010
