

SPATA19 RABBIT PAB

货号: S216866

产品全名: SPATA19 兔多抗

基因符号 CT132; SPAS1; spergen1

UNIPROT ID: Q7Z5L4 (Gene Accession - BC058039)

背景: SPATA19(spermatogenesis associated 19), also known as spergen1 (spermatogenic cell-specific gene 1 protein), CT132 or SPAS1, is a 167 amino acid mitochondrial outer membrane protein suggested to function in spermiogenesis. Expressed specifically in testis, SPATA19 is encoded by a gene that maps to human chromosome 11, which comprises approximately 4% of human genomic DNA and is considered a gene and disease association dense chromosome. The chromosome 11 encoded Atm gene is important for regulation of cell cycle arrest and apoptosis following double strand DNA breaks. Atm mutation leads to the disorder known as ataxiatelangiectasia. The blood disorders Sickle cell anemia and thalassemia are caused by HBB gene mutations, while Wilms? tumors, WAGR syndrome and Denys-Drash syndrome are associated with mutations of the WTI gene. Jervell and Lange-Nielsen syndrome, Jacobsen syndrome, Niemann-Pick disease, hereditary angioedema and Smith-Lemli-Opitz syndrome are also associated with defects in chromosome 11-encoded genes.

抗原: Fusion protein of human SPATA19

经过测试的应用: ELISA, IHC

推荐稀释比: IHC: 25-100; ELISA: 5000-10000

种属反应性: Rabbit

克隆性: Rabbit Polyclonal

亚型: Immunogen-specific rabbit IgG

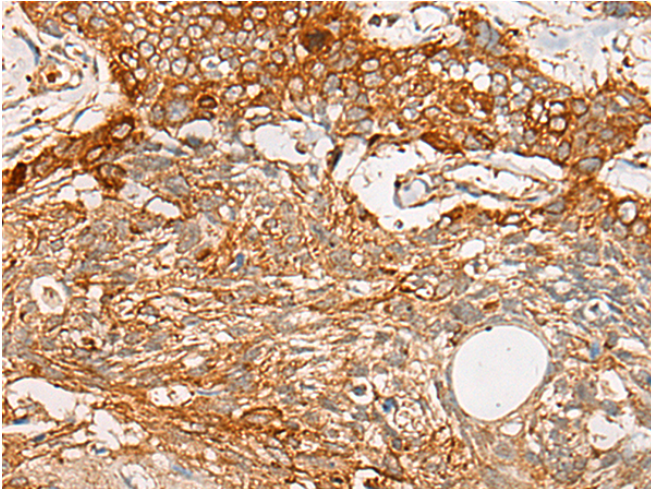
纯化: Antigen affinity purification

种属反应性: Human

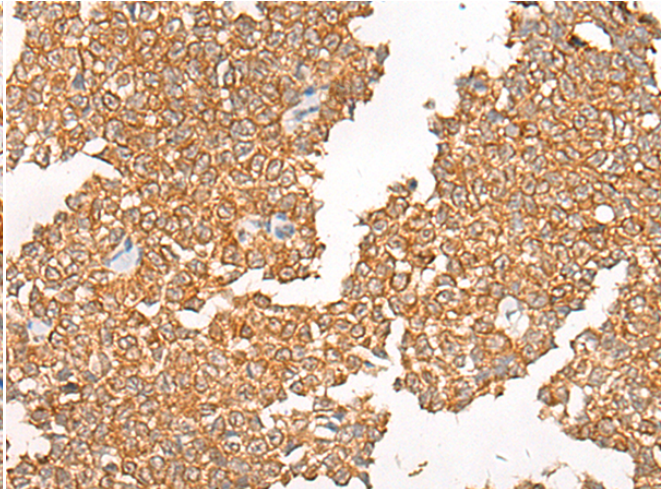
成分: PBS (without Mg²⁺ and Ca²⁺), pH 7.4, 150 mM NaCl, 0.05% Sodium Azide and 40% glycerol

研究领域: Cancer

储存和运输: Store at -20°C. Avoid repeated freezing and thawing



Immunohistochemistry analysis of paraffin-embedded Human esophagus cancer tissue using 216866 (SPATA19 Antibody) at a dilution of 1/20 (Mitochondrion outer membrane).



Immunohistochemistry analysis of paraffin-embedded Human ovarian cancer tissue using 216866 (Anti-SPATA19 Antibody) at a dilution of 1/20.