

SPATA18 RABBIT PAB

货号: S214740

产品全名: SPATA18 兔多抗

基因符号: Mieap; SPETEX1

UNIPROT ID: Q8TC71 (Gene Accession - NP_660306)

背景: SPATA18 (spermatogenesis associated 18), also known as Mieap or SPETEX1, is a 538 amino acid protein that is thought to play a role in cell differentiation during spermatogenesis, particularly during development from late elongate spermatids to mature spermatozoa. Localizing to cytoplasm, SPATA18 is encoded by a gene that maps to human chromosome 4q12.

抗原: Synthetic peptide of human SPATA18

经过测试的应用: ELISA, WB, IHC

推荐稀释比: IHC: 25-100;WB: 200-1000;ELISA: 1000-2000

种属反应性: Rabbit

克隆性: Rabbit Polyclonal

亚型: Immunogen-specific rabbit IgG

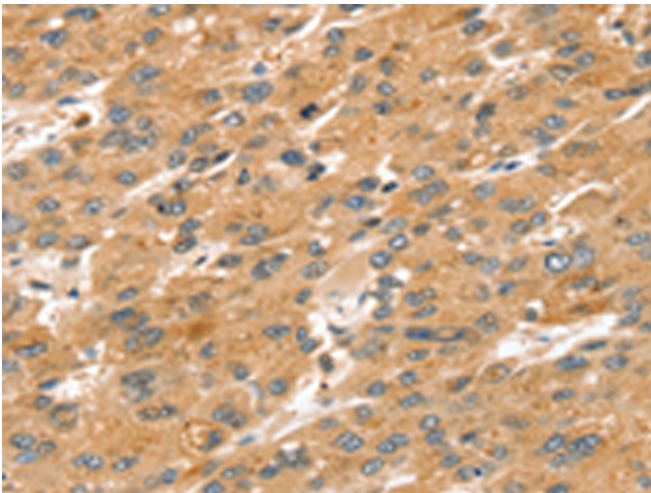
纯化: Antigen affinity purification

种属反应性: Human

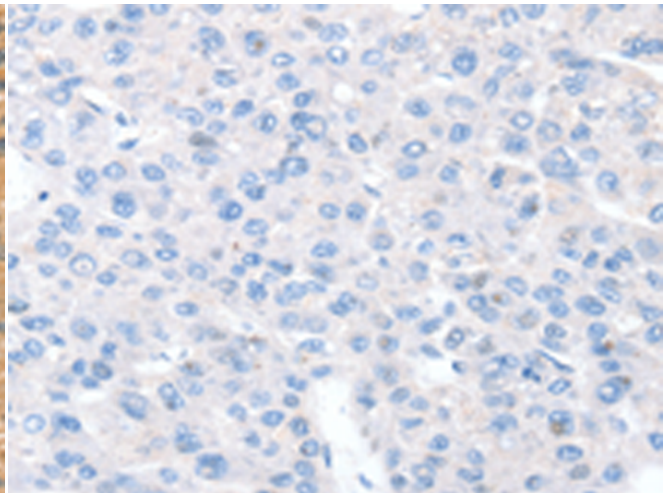
成分: PBS (without Mg²⁺ and Ca²⁺), pH 7.4, 150 mM NaCl, 0.05% Sodium Azide and 40% glycerol

研究领域: Developmental Biology

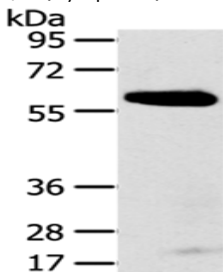
储存和运输: Store at -20°C. Avoid repeated freezing and thawing



Immunohistochemistry analysis of paraffin embedded Human liver cancer tissue using 214740 (SPATA18 Antibody) at a dilution of 1/20 (Cytoplasm).



In comparison with the IHC on the left, the same paraffin-embedded Human liver cancer tissue is first treated with the synthetic peptide and then with 214740 (Anti-SPATA18 Antibody) at dilution 1/20.



Gel: 8%SDS-PAGE, Lysate: 40 µg;
Lane: Human normal stomach tissue;
Primary antibody: 214740 (SPATA18 Antibody) at dilution 1/250;
Secondary antibody: Goat anti rabbit IgG at 1/8000 dilution;
Exposure time: 5 minutes