

SPATA16 RABBIT PAB

货号: S216865

产品全名: SPATA16 兔多抗

基因符号: SPGF6; NYD-SP12

UNIPROT ID: Q9BXB7 (Gene Accession - BC034496)

背景: This gene encodes a testis-specific protein that belongs to the tetratricopeptide repeat-like superfamily. The encoded protein localizes to the Golgi apparatus and may play a role in spermatogenesis. [provided by RefSeq, May 2010]

抗原: Fusion protein of human SPATA16

经过测试的应用: ELISA, IHC

推荐稀释比: IHC: 150-300; ELISA: 5000-10000

种属反应性: Rabbit

克隆性: Rabbit Polyclonal

亚型: Immunogen-specific rabbit IgG

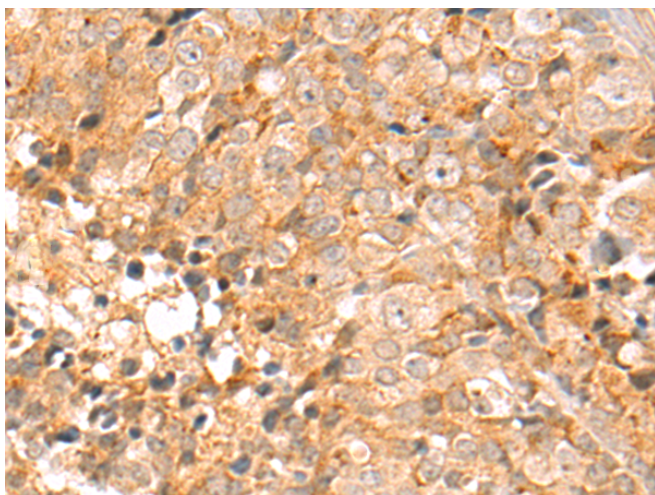
纯化: Antigen affinity purification

种属反应性: Human, Mouse

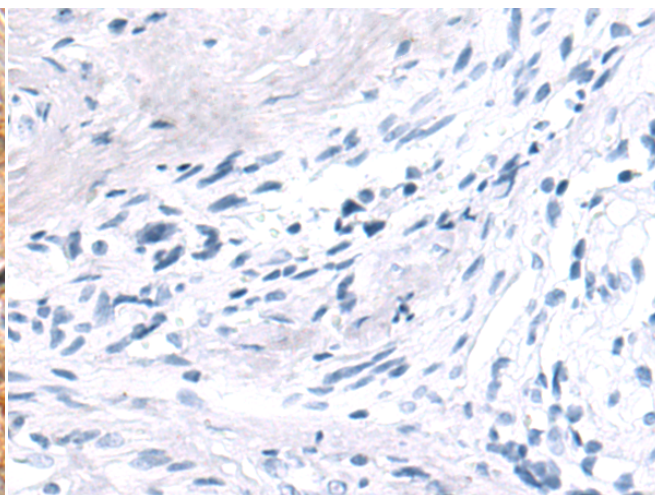
成分: PBS (without Mg²⁺ and Ca²⁺), pH 7.4, 150 mM NaCl, 0.05% Sodium Azide and 40% glycerol

研究领域: Developmental Biology

储存和运输: Store at -20°C. Avoid repeated freezing and thawing



Immunohistochemistry analysis of paraffin embedded Human colorectal cancer tissue using 216865 (SPATA16 Antibody) at a dilution of 1/150 (Cytoplasm).



In comparison with the IHC on the left, the same paraffin-embedded Human colorectal cancer tissue is first treated with the fusion protein and then with 216865 (Anti-SPATA16 Antibody) at dilution 1/150.