

SPAG8 RABBIT PAB

货号: S216797

产品全名: SPAG8 兔多抗

基因符号 SMP1, BS-84, HSD-1, SPAG3, hSMP-1

UNIPROT ID: Q99932 (Gene Accession - BC019247)

背景: The correlation of anti-sperm antibodies with cases of unexplained infertility implicates a role for these antibodies in blocking fertilization. Improved diagnosis and treatment of immunologic infertility, as well as identification of proteins for targeted contraception, are dependent on the identification and characterization of relevant sperm antigens. The protein encoded by this gene is recognized by sperm agglutinating antibodies from an infertile woman. This protein is localized in germ cells of the testis at all stages of spermatogenesis and is localized to the acrosomal region of mature spermatozoa. This protein interacts with ACT (activator of CREM in testis) and may play a role in CREM (cAMP response element modulator)-ACT-mediated gene transcription during spermatogenesis. This protein may also play a role in spermatogenesis by regulating microtubule formation and cell division. Alternatively spliced variants that encode different protein isoforms have been described but the full-length sequences of only two have been determined.

抗原: Fusion protein of human SPAG8

经过测试的应用: ELISA, IHC

推荐稀释比: IHC: 25-100; ELISA: 1000-5000

种属反应性: Rabbit

克隆性: Rabbit Polyclonal

亚型: Immunogen-specific rabbit IgG

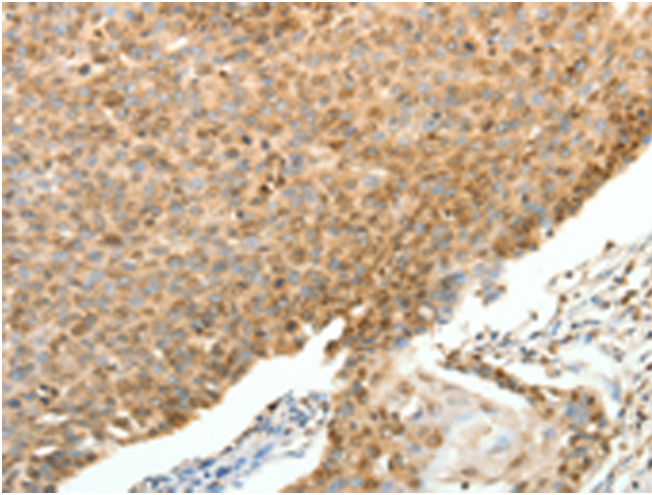
纯化: Antigen affinity purification

种属反应性: Human

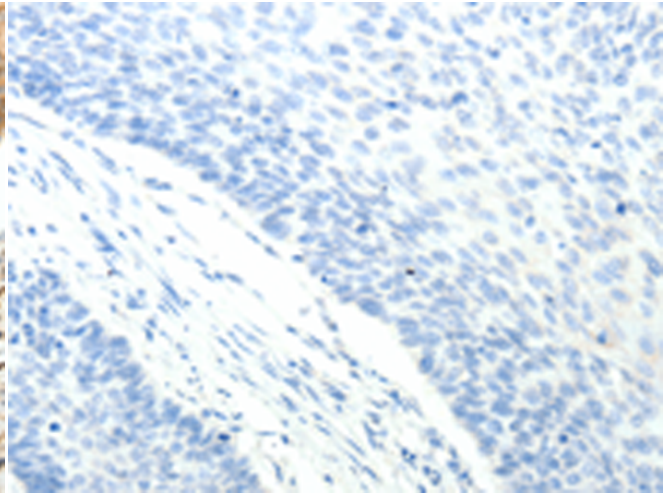
成分: PBS (without Mg²⁺ and Ca²⁺), pH 7.4, 150 mM NaCl, 0.05% Sodium Azide and 40% glycerol

研究领域: Cancer, Stem Cells

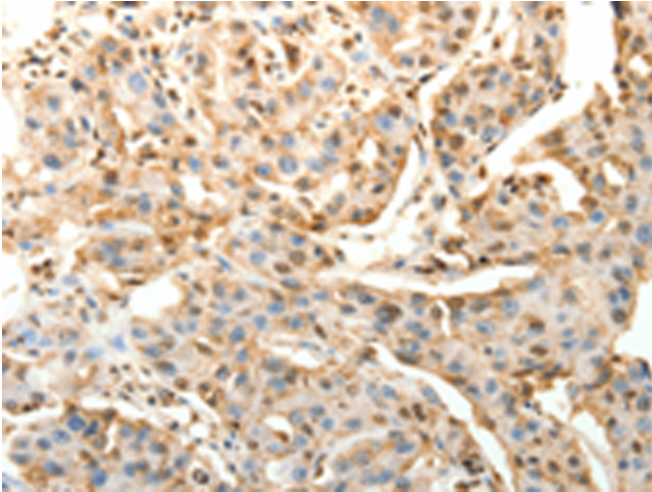
储存和运输: Store at -20°C. Avoid repeated freezing and thawing



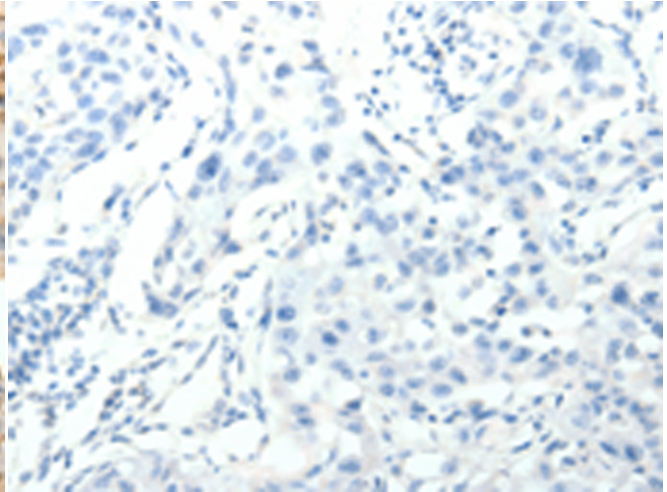
Immunohistochemistry analysis of paraffin embedded Human cervical cancer tissue using 216797 (SPAG8 Antibody) at a dilution of 1/25 (Cytoplasm).



In comparison with the IHC on the left, the same paraffin-embedded Human cervical cancer tissue is first treated with the fusion protein and then with 216797 (Anti-SPAG8 Antibody) at dilution 1/25.



The image on the left is immunohistochemistry of paraffin-embedded Human lung cancer tissue using 216797 (Anti-SPAG8 Antibody) at a dilution of 1/25.



In comparison with the IHC on the left, the same paraffin-embedded Human lung cancer tissue is first treated with fusion protein and then with D221256 (Anti-SPAG8 Antibody) at dilution 1/25.