

SPAG5 RABBIT PAB

货号: S216798

产品全名: SPAG5 兔多抗

基因符号: MAPI26; DEEPEST; hMAPI26

UNIPROT ID: Q96R06 (Gene Accession - BC000322)

背景: Sperm-associated antigen 5 is a protein that in humans is encoded by the SPAG5 gene. This gene encodes a protein associated with the mitotic spindle apparatus. The encoded protein may be involved in the functional and dynamic regulation of mitotic spindles. Essential component of the mitotic spindle required for normal chromosome segregation and progression into anaphase. Required for chromosome alignment, normal timing of sister chromatid segregation, and maintenance of spindle pole architecture. The astrin (SPAG5)-kinastrin (SKAP) complex promotes stable microtubule-kinetochore attachments.

抗原: Fusion protein of human SPAG5

经过测试的应用: ELISA, IHC

推荐稀释比: IHC: 25-100; ELISA: 2000-5000

种属反应性: Rabbit

克隆性: Rabbit Polyclonal

亚型: Immunogen-specific rabbit IgG

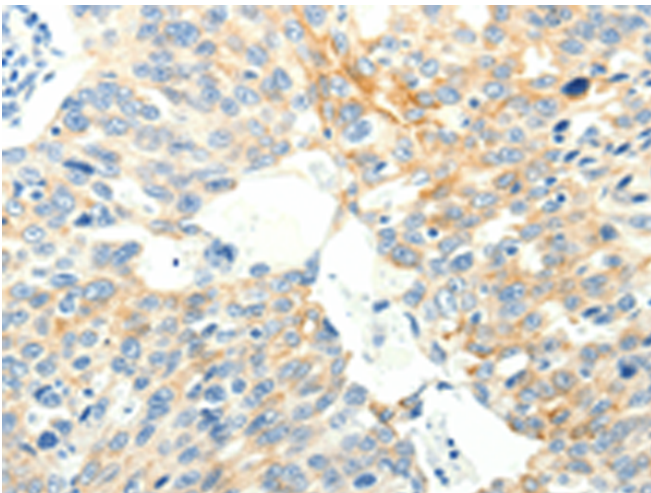
纯化: Antigen affinity purification

种属反应性: Human, Mouse

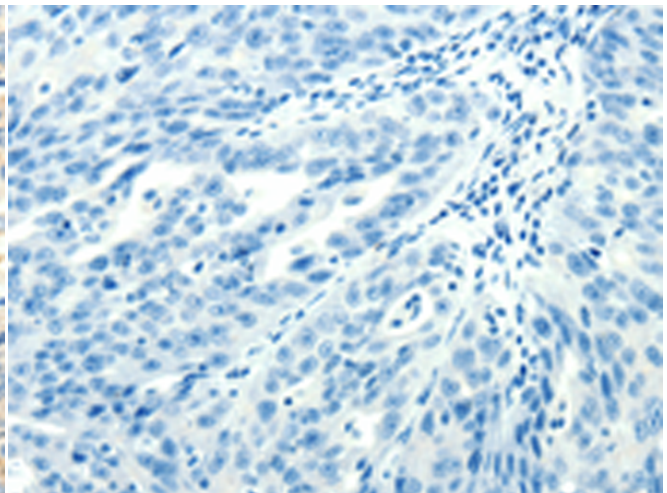
成分: PBS (without Mg²⁺ and Ca²⁺), pH 7.4, 150 mM NaCl, 0.05% Sodium Azide and 40% glycerol

研究领域: Cancer

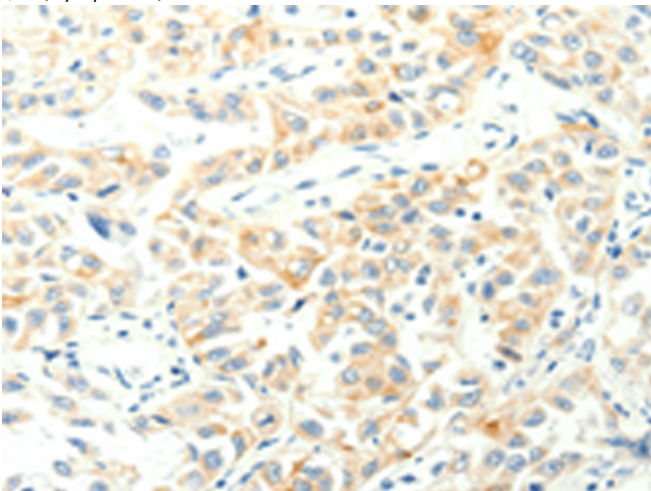
储存和运输: Store at -20°C. Avoid repeated freezing and thawing



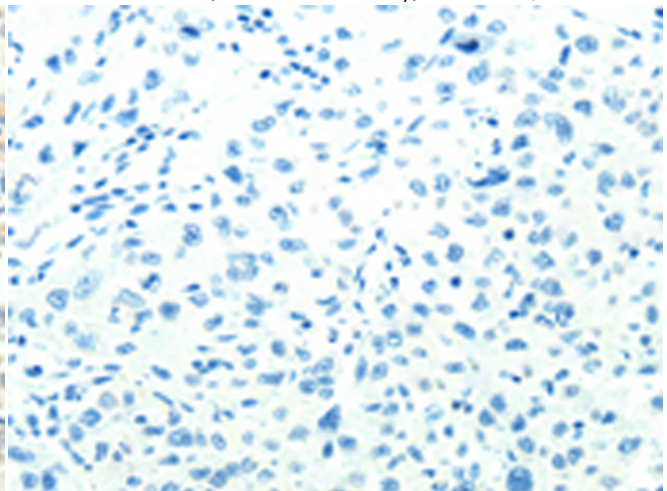
Immunohistochemistry analysis of paraffin embedded Human ovarian cancer tissue using 216798(SPAG5 Antibody) at a dilution of 1/35(Cytoplasm).



In comparison with the IHC on the left, the same paraffin-embedded Human ovarian cancer tissue is first treated with the fusion protein and then with 216798(Anti-SPAG5 Antibody) at dilution 1/35.



The image on the left is immunohistochemistry of paraffin-embedded Human lung cancer tissue using 216798(Anti-SPAG5 Antibody) at a dilution of 1/35.



In comparison with the IHC on the left, the same paraffin-embedded Human lung cancer tissue is first treated with fusion protein and then with D221257(Anti-SPAG5 Antibody) at dilution 1/35.

