

SPAG4 RABBIT PAB

货号: S213875

产品全名: SPAG4 兔多抗

基因符号: SUN4; CT127

UNIPROT ID: Q9NPE6 (Gene Accession - NP_003107)

背景: The mammalian sperm flagellum contains two cytoskeletal structures associated with the axoneme: the outer dense fibers surrounding the axoneme in the midpiece and principal piece and the fibrous sheath surrounding the outer dense fibers in the principal piece of the tail. Defects in these structures are associated with abnormal tail morphology, reduced sperm motility, and infertility. In the rat, the protein encoded by this gene associates with an outer dense fiber protein via a leucine zipper motif and localizes to the microtubules of the manchette and axoneme during sperm tail development.

抗原: Synthetic peptide of human SPAG4

经过测试的应用: ELISA, WB, IHC

推荐稀释比: IHC: 100-300;WB: 200-1000;ELISA: 2000-5000

种属反应性: Rabbit

克隆性: Rabbit Polyclonal

亚型: Immunogen-specific rabbit IgG

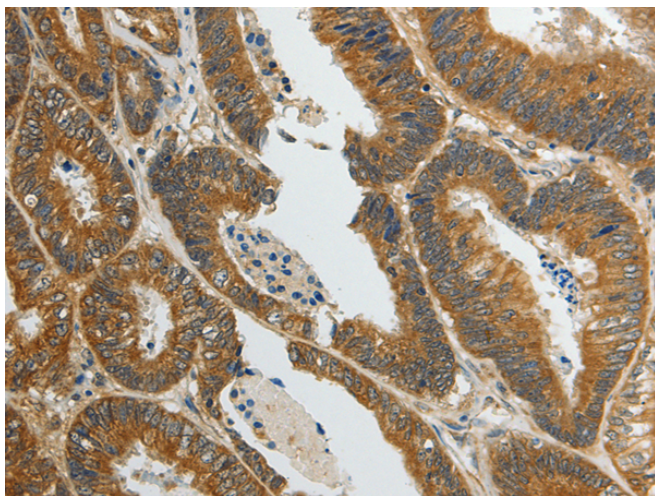
纯化: Antigen affinity purification

种属反应性: Human, Mouse

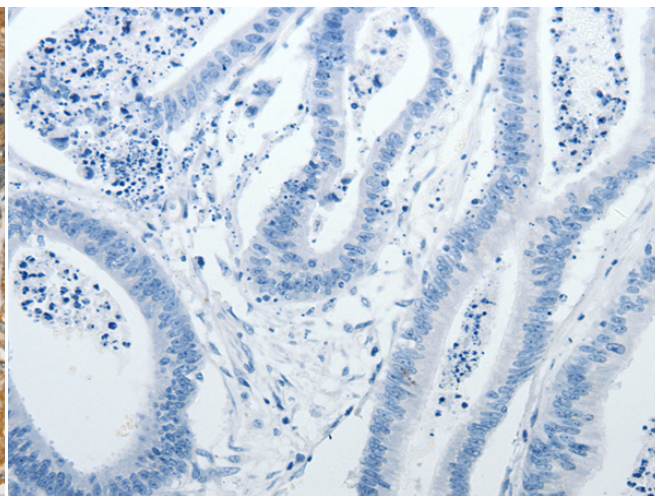
成分: PBS (without Mg²⁺ and Ca²⁺), pH 7.4, 150 mM NaCl, 0.05% Sodium Azide and 40% glycerol

研究领域: Signal Transduction

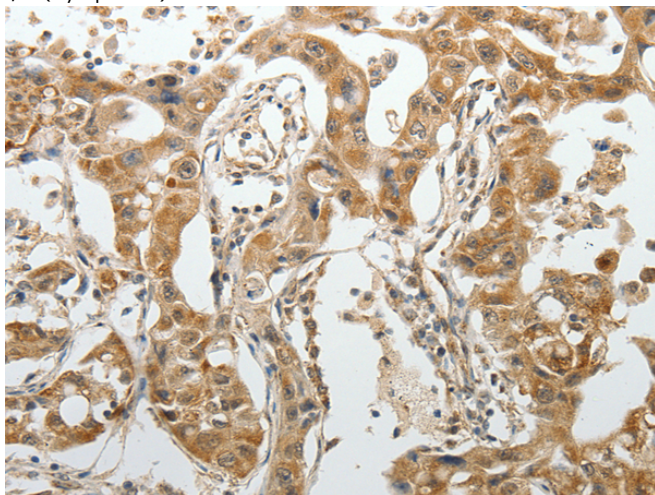
储存和运输: Store at -20°C. Avoid repeated freezing and thawing



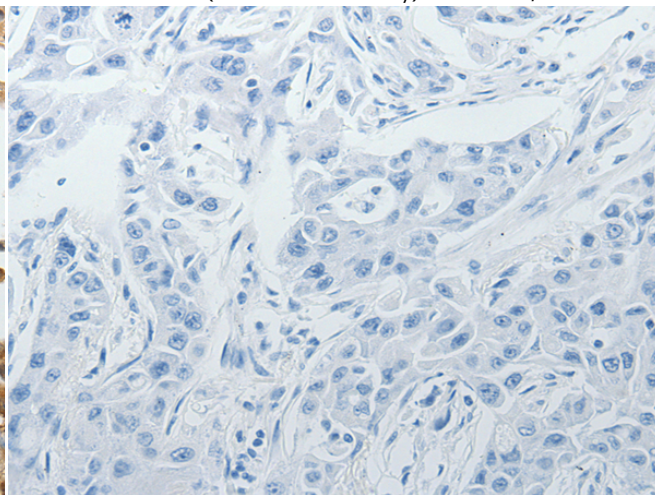
Immunohistochemistry analysis of paraffin embedded Human colon cancer tissue using 213875 (SPAG4 Antibody) at a dilution of 1/70 (Cytoplasm).



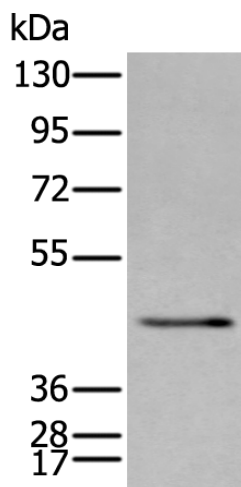
In comparison with the IHC on the left, the same paraffin-embedded Human colon cancer tissue is first treated with the synthetic peptide and then with 213875 (Anti-SPAG4 Antibody) at dilution 1/70.



The image on the left is immunohistochemistry of paraffin-embedded Human lung cancer tissue using 213875 (Anti-SPAG4 Antibody) at a dilution of 1/70.



In comparison with the IHC on the left, the same paraffin-embedded Human lung cancer tissue is first treated with synthetic peptide and then with D160986 (Anti-SPAG4 Antibody) at dilution 1/70.



Gel: 8% SDS-PAGE, Lysate: 40 µg;
Lane: NIH/3T3 cell lysate;
Primary antibody: 213875 (SPAG4 Antibody) at dilution 1/400;
Secondary antibody: Goat anti rabbit IgG at 1/8000 dilution;
Exposure time: 5 minutes



Product Description

Pioneering GTPase and Oncogene Product Development since 2010
