

## **SORTILIN RABBIT MAB**

货号: N263556

产品全名: Sortilin 兔单克隆抗体

基因符号 100 kDa NT receptor; Glycoprotein 95; Gp95; LDLCQ6;  
Neurotensin receptor 3; NT3; NTR3; SORT 1; Sortilin 1

**UNIPROT ID:** Q99523

**背景:** Functions as a sorting receptor in the Golgi compartment and as a clearance receptor on the cell surface. Required for protein transport from the Golgi apparatus to the lysosomes by a pathway that is independent of the mannose-6-phosphate receptor (M6PR).

**抗原:** Recombinant protein of human Sortilin/NT3

**经过测试的应用:** WB,IHC-P

**推荐稀释比:** WB: 1/500-1/1000 IHC: 1/50-1/100

**种属反应性:** Rabbit

**克隆性:** Rabbit Monoclonal

**克隆编号:** R02-6B4

**分子量:** Calculated MW: 92 kDa; Observed MW: 92 kDa

**亚型:** IgG

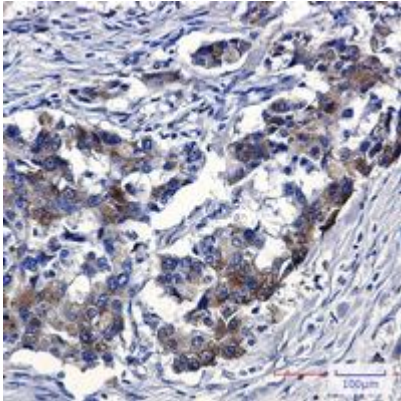
**纯化:** Affinity Purified

**种属反应性:** Human,Rat

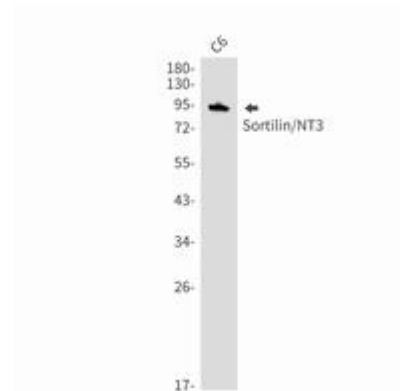
**成分:** PBS (without Mg<sup>2+</sup> and Ca<sup>2+</sup>), pH 7.3 containing 50% glycerol, 0.5% BSA and 0.02% sodium azide

**研究领域:** Neuroscience

**储存和运输:** Store at -20°C. Avoid repeated freezing and thawing



Immunohistochemistry analysis of paraffin-embedded Human lung cancer using Sortilin/NT3 antibody. High-pressure and temperature Sodium Citrate pH 6.0 was used for antigen retrieval.



Western blot analysis of Sortilin/NT3 in C6 lysates using Sortilin antibody.



Western blot analysis of Sortilin/NT3 in HeLa, A549, MCF-7 lysates using Sortilin/NT3 antibody.