

SONIC HEDGEHOG RABBIT MAB

货号: N262925

产品全名: Sonic Hedgehog 兔单克隆抗体

基因符号 Sonic hedgehog protein; SHH; HHG-1; Sonic hedgehog protein N-product; Sonic hedgehog protein C-product

UNIPROT ID: Q15465

背景: This gene encodes a protein that is instrumental in patterning the early embryo. It has been implicated as the key inductive signal in patterning of the ventral neural tube, the anterior-posterior limb axis, and the ventral somites. Of three human proteins showing sequence and functional similarity to the sonic hedgehog protein of *Drosophila*, this protein is the most similar.

抗原: A synthetic peptide of human Sonic Hedgehog

经过测试的应用: WB,IHC-F,IHC-P,ICC/IF

推荐稀释比: WB: 1/500-1/1000 IHC: 1/50-1/100 IF: 1/50-1/200

种属反应性: Rabbit

克隆性: Rabbit Monoclonal

克隆编号: R06-9H9

分子量: Calculated MW: 50 kDa; Observed MW: 50,27 kDa

亚型: IgG

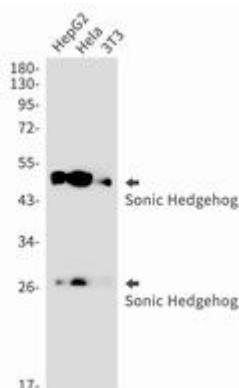
纯化: Affinity Purified

种属反应性: Human,Mouse

成分: PBS (without Mg²⁺ and Ca²⁺), pH 7.3 containing 50% glycerol, 0.5% BSA and 0.02% sodium azide

研究领域: Epigenetics and Nuclear Signaling

储存和运输: Store at -20°C. Avoid repeated freezing and thawing



Western blot analysis of Sonic Hedgehog in HepG2, HeLa, 3T3 lysates using Sonic Hedgehog antibody.



Product Description

Pioneering GTPase and Oncogene Product Development since 2010
