

SOGA1 RABBIT PAB

货号: S221651

产品全名: SOGA1 兔多抗

基因符号: SOGA; KIAA0889; C20orf117

UNIPROT ID: O94964 (Gene Accession - NP_954650)

背景: Regulates autophagy by playing a role in the reduction of glucose production in an adiponectin- and insulin-dependent manner.

抗原: Synthetic peptide of human SOGA1

经过测试的应用: ELISA, IHC

推荐稀释比: IHC: 20-100; ELISA: 5000-10000

种属反应性: Rabbit

克隆性: Rabbit Polyclonal

亚型: Immunogen-specific rabbit IgG

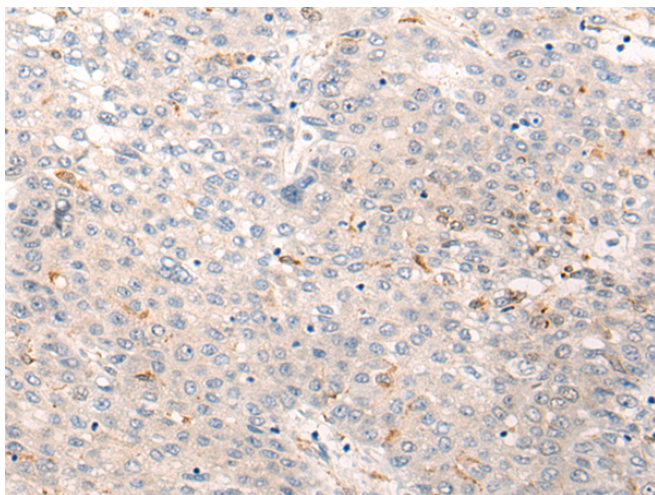
纯化: Antigen affinity purification

种属反应性: Human

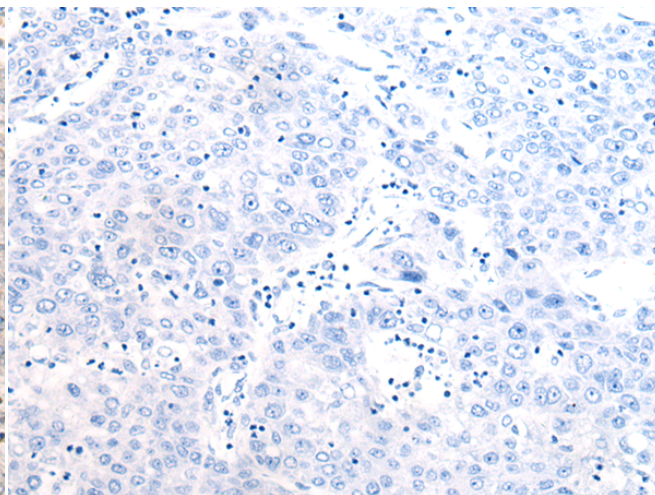
成分: PBS (without Mg²⁺ and Ca²⁺), pH 7.4, 150 mM NaCl, 0.05% Sodium Azide and 40% glycerol

研究领域: Cell Biology

储存和运输: Store at -20°C. Avoid repeated freezing and thawing



Immunohistochemistry analysis of paraffin embedded Human liver cancer tissue using 221651(SOGA1 Antibody) at a dilution of 1/30(Cytoplasm).



In comparison with the IHC on the left, the same paraffin-embedded Human liver cancer tissue is first treated with the synthetic peptide and then with 221651(Anti-SOGA1 Antibody) at dilution 1/30.